

Service Manual

AUTOMOTIVE AFTERMARKET

CQ-RG133W1

Removable Face High-Power Cassette / Receiver with Changer Control



Specification*

General

Power Supply	DC 12V (11V - 16V), Test Voltage 14.4V Negative Ground
Tone Controls	Bass ; ± 12 dB at 100Hz Treble ; ± 12 dB at 10kHz
Current Consumption	Less than 2.5A (Tape play mode, 0.5W \times 4ch)
Maximum Power Output	40W \times 4ch (at 400Hz, Vol. Max.)
Suitable Speaker Impedance	4-8 Ω
Pre-Amp Output Voltage	2V (CD play mode; 1kHz, 0dB)
Output Impedance	200 Ω

FM Stereo Radio

Frequency Range	87.5 - 108.0MHz
Usable Sensitivity	12.0dBf (1.1 μ V, 75 Ω)
Frequency Response	30Hz to 15,000Hz (± 3 dB)
Alternate Channel Sensitivity	75dB
Stereo Separation	35dB(1kHz)
Signal to Noise Ratio	70dB(Mono)

AM Radio

Frequency Range	531 - 1,602kHz
Usable Sensitivity	28dB/ μ V (25 μ V, S/N 20dB)

Tape Player

Reproduction System	4-track,2-program stereo
Tape Speed	1-7/8" /sec (4.76cm/sec)
FF/REW Time	Less than 200 sec (C-60)
Wavelength	780nm
Frequency Response	35Hz to 14,000Hz (± 3 dB)
Signal to Noise Ratio	52dB

Dimensions** 178 \times 50 \times 150mm

Weight** 1.6kg

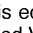
* Specifications and the design are subject to possible modification without notice due to improvements.

** Dimensions and Weight shown are approximate.

WARNING

This service information is designed for experienced repair technicians only and is not designed for use by the general public. It does not contain warnings or cautions to advise non-technical individuals of potential dangers in attempting to service a product. Products powered by electricity should be serviced or repaired only by experienced professional technicians. Any attempt to service or repair the product or products dealt with in this service information by anyone else could result in serious injury or death.

IMPORTANT SAFETY NOTICE

There are special components used in this equipment which are important for safety. These parts are marked by  in the Schematic Diagrams, Circuit Board Diagrams, Exploded Views and Replacement Parts List. It is essential that these critical parts should be replaced with manufacturer's specified parts to prevent shock, fire or other hazards. Do not modify the original design without permission of manufacturer.

Panasonic[®]

© 2005 Matsushita Electric Industrial Co., Ltd. All rights reserved. Unauthorized copying and distribution is a violation of law.

CONTENTS

	Page		Page
1 ABOUT LEAD FREE SOLDER (PbF)	2	10 PACKAGE AND IC BLOCK DIAGRAM	6
2 FEATURES	2	11 REPLACEMENT PARTS LIST (Unit)	8
3 REPLACING THE FUSE	2	12 EXPLODED VIEW (Unit)	12
4 MAINTENANCE	2	13 REPLACEMENT PARTS LIST (Tape Player Parts)	13
5 RADIO ALIGNMENT	2	14 EXPLODED VIEW (Tape Deck)	15
6 DIMENSIONS	2	15 WIRING DIAGRAM	16
7 WIRING CONNECTION	3	16 SCHEMATIC DIAGRAM	19
8 BLOCK DIAGRAM	4	17 SCHEMATIC DIAGRAM for printing with A4 size	21
9 TERMINALS DESCRIPTION	5		

1 ABOUT LEAD FREE SOLDER (PbF)

Distinction of PbF PCB:

PCBs (manufactured) using lead free solder will have a PbF stamp on the PCB.

Caution :

- Pb free solder has a higher melting point than standard solder; Typically the melting point is 50 - 70°F (30 - 40°C) higher. Please use a soldering iron with temperature control and adjust it to 700 ± 20°F (370 ± 10°C). In case of using high temperature soldering iron, please be careful not to heat too long.
- Pb free solder will tend to splash when heated too high (about 1100°F/600°C)
- This lead free solder will be used for the products after serial No. 1,000,001.

2 FEATURES

- PLL (Phase Locked Loop) Synthesized Tuning
- 1DIN Size Body with Cassette Player, AM/FM Tuner, Power AMP (30Wx4)
- 18-FM , 6-AM stations preset
- Auto preset and scan function
- CD Changer Control function

3 REPLACING THE FUSE

Be sure to use a fuse of the specified rating (10A) when replacing a blown fuse. Fuses with higher capacity ratings, use of any substitute, or connection without a fuse may result in a fire hazard or damage to the unit.

4 MAINTENANCE

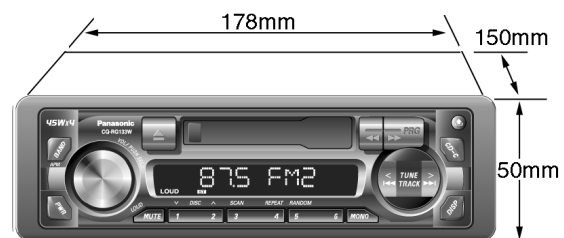
Your product is designed and manufactured to ensure a minimum of maintenance. Use a soft cloth for routine exterior cleaning. Never use benzine, or other solvent.

5 RADIO ALIGNMENT

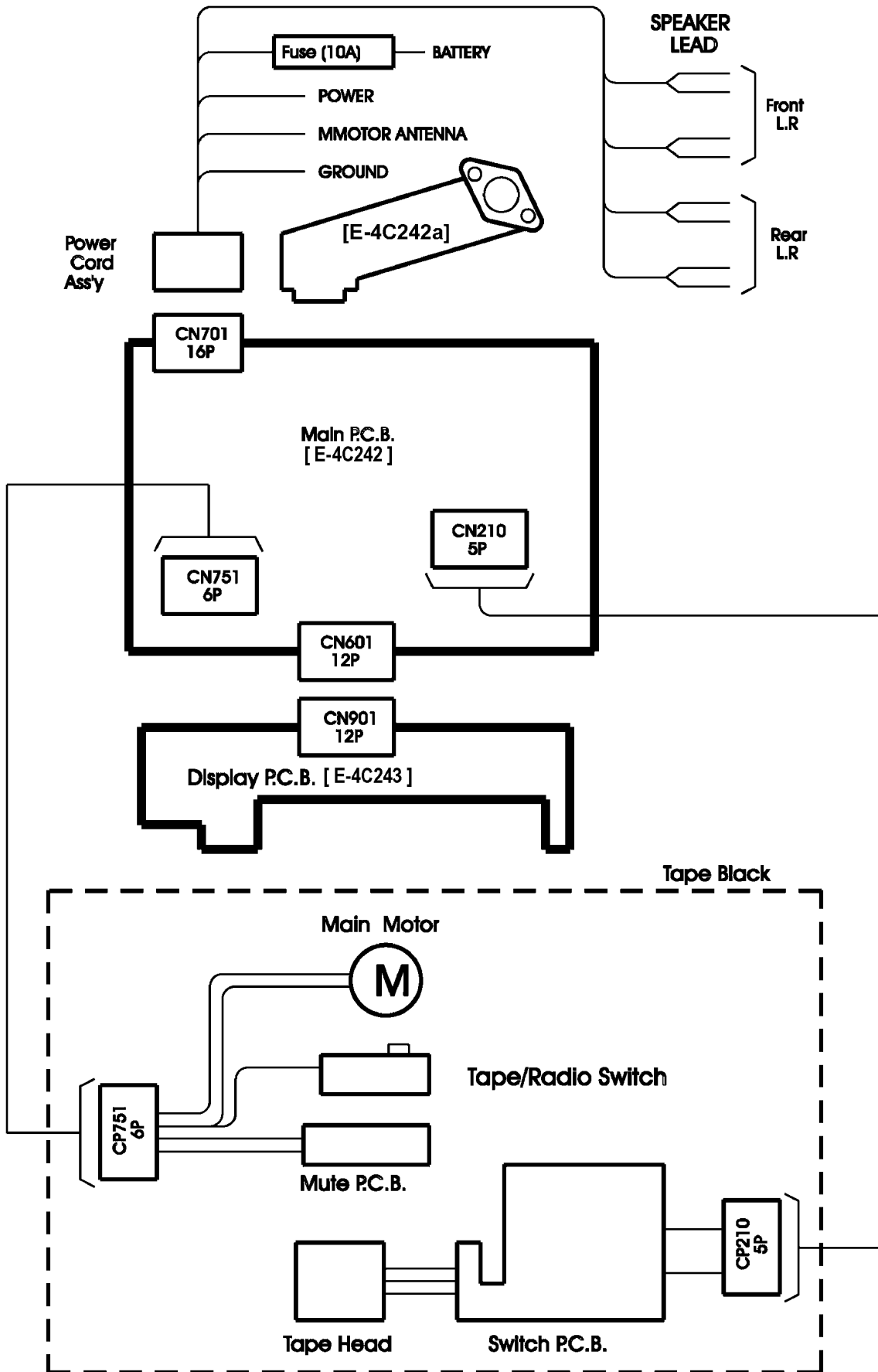
Do not align the AM/FM package blocks. When the package block is necessary, it will be supplied already aligned at the

factory.

6 DIMENSIONS



7 WIRING CONNECTION



9 TERMINALS DESCRIPTION

9.1. Main Block

IC601 : YEMLC72358N

Pin No.	Port	Descriptions	I/O (V)	FM (V)	AM (V)	TAPE (V)
66	MODE B	MODE B	I	0	0	0
1	XIN	Crystal Oscillator	I	2	2	2
2	TEST2	TEST2	I	0	0	0
3	SI0/PG3	CD Changer Data	I	0	0	0
4	SO0/PG2	-	O	-	-	-
5	SCK0/PG1	CD Changer Clock	I	0	0	0
6	PGO	Remoto Data Output	O	0	0	0
7	SI1/PF3	LCD Data Output	I	4.2	4.4	4.2
8	SOL/PF2	LCD Data input	O	0	5	0
9	SCK1/PF1	LCD Clock	O	5	5	5
10	PF0	LCD Chip Enble	O	0	0	0
11	SI2/PE3	-	O	-	-	-
12	SO2/PE2	ALPS Rotary Encoder Input	I	4.8	4.7	5
13	SCK2/PE1	In / Out Detection	I	1	1	1
14	PE0	-	O	-	-	-
15	PD3	-	O	-	-	-
16	PD2	-	O	-	-	-
17	PD1	-	O	-	-	-
18	PD0	-	O	-	-	-
19	PC3	-	O	-	-	-
20	PC2	-	O	-	-	-
21	PC1	-	O	-	-	-
22	PC0	-	O	-	-	-
23	PB3	-	O	-	-	-
24	PB2	-	O	-	-	-
25	PB1	-	O	-	-	-
26	PB0	-	O	-	-	-
27	PA3	(Connect to Ground)	I	-	-	-
28	PA2	(Connect to Ground)	I	-	-	-
29	PA1	(Connect to Ground)	I	-	-	-
30	PA0	(Connect to Ground)	I	-	-	-
31	VDD	Power supply +5V	-	5	5	5
32	PQ0	-	O	-	-	-
33	PP3	System Power Control	O	5	5	5
34	PP2	AMP ST-BY Control	O	5	5	5
35	PP1	Mute Control	O	5	5	0
36	PP0	Alarm LED Output	O	0	0	0
37	PO3	Search Stop Control	O	0	0	0
38	PO2	-	O	-	-	-
39	PO1	I2C Data	O	5	5	5
40	PO0	I2C Clock	O	5	5	5
41	PN3	-	O	-	-	-
42	PN2	-	O	-	-	-
43	PN1	-	O	-	-	-
44	PN0/BEEP	-	O	-	-	-
45	PM3	-	O	-	-	-
46	PM2	-	O	-	-	-
47	PM1	-	O	-	-	-
48	PM0	-	O	-	-	-
49	PL3	-	O	-	-	-
50	PL2	Forward/Reverse Select	I	0	0	5
51	PL1	-	I	0	0	4.4
52	PL0	Tape In / Out Detection	I	0	0	4.5
53	PK3	Battery Detection	I	5.7	5.6	5.7
54	PK2	-	O	-	-	-
55	PK1/INT1	ALPS Rotary Encoder Input	I	4.8	0	4.8
56	PK0/INT0	CD Changer Strobe	I	0	0	0
57	PJ3	Power LED Output Control	O	0	0	0
58	PJ2	FM MONO SW	O	0	0	0
59	PJ1	Tuner On / Off Control	O	0	0	7.1
60	PJ0	FM/AM Select Switch	O	0	0	0
61	PI1/ADI5	(Connect to Ground)	I	-	-	-
62	PI0/ADI4	Mode Select B	I	5	5	5
63	PH3/ADI3	Mode Select A	I	0	0	5

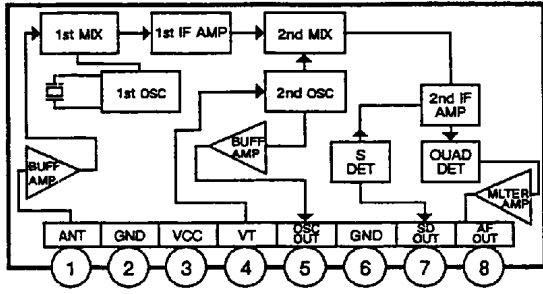
Pin No.	Port	Descriptions	I/O (V)	FM (V)	AM (V)	TAPE (V)
64	PH2/ADI2	Stereo Signal Input	I	4.8	0	0
65	PH1/ADI1	FM SD Input	I	0.77	2.5	0
66	PH0/ADI0	AM SD Input	I	0.56	2.2	0
67	HOLD	ACC Detection	I	5.2	5.2	5.2
68	SNS	Hot / Cold Detection	I	4.6	4.5	4.6
69	LCTR	(Connect to Ground)	I	-	-	-
70	HCTR	FM/AM IF Input	I	2.3	2.3	0
71	EO3	-	O	-	-	-
72	SUBPD	-	O	-	-	-
73	VDD	Power supply +5V	-	5	5	5
74	AMIN	(Connect to Ground)	I	-	-	-
75	FMIN	FM OSC Input	I	2.2	2.3	0
76	VSS	Ground	-	0	0	0
77	EO2	-	O	-	-	-
78	EO1	FM / AM VT Output	O	1.3	1.3	1.4
79	TEST1	TEST1	I	0	0	0
80	XOUT	Crystal Oscillator	O	2.5	2.5	2.5

9.2. Display Block

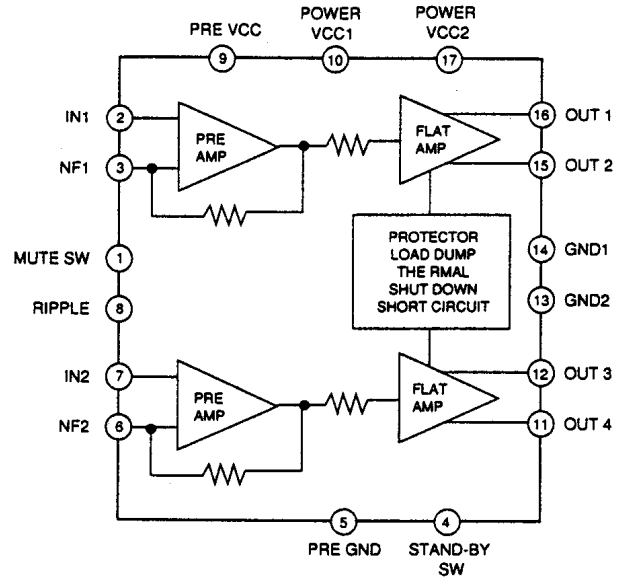
IC901 : YEAMLC75853NW

Pin No.	Port	Descriptions	I/O (V)	(V)
1-8	SEG1-8	LCD segment	O	2.5
9-35	SEG9-35	LCD segment	O	2.5
36-39	NC	No connection	-	-
40-43	COM1-4	LCD common	O	2.5
44-49	KS1-6	Key data output	O	0.9
50-54	KI1-5	Key data input	I	0
55	TEST	(Connecting to ground)	-	0
56	VDD	+5V power supply	-	5.1
57	VDD1	Ground through capacitor	-	3.3
58	VDD2	Ground through capacitor	-	1.7
59	Vss	Ground	-	0
60	OSC	CR oscillator	-	3.9
61	DO	Key data output	O	4.4
62	CE	Chip enable	I	0
63	CLK	LCD clock	I	0
64	DI	LCD data input	I	0

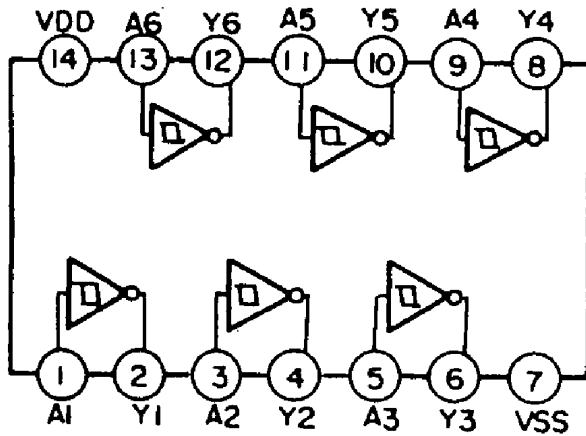
10 PACKAGE AND IC BLOCK DIAGRAM



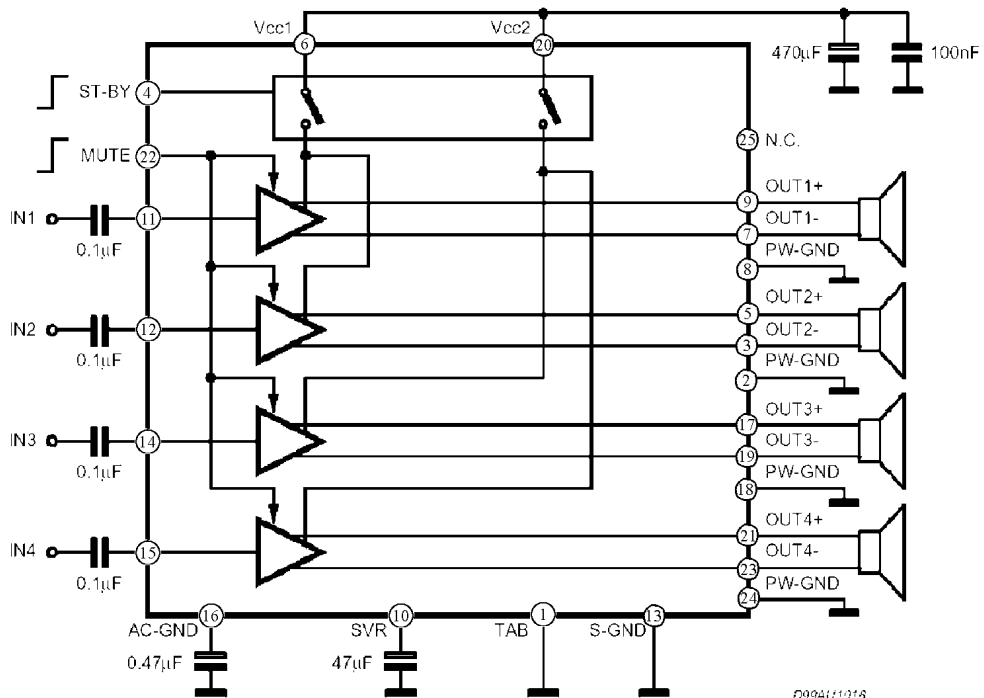
P50 CT-T02B



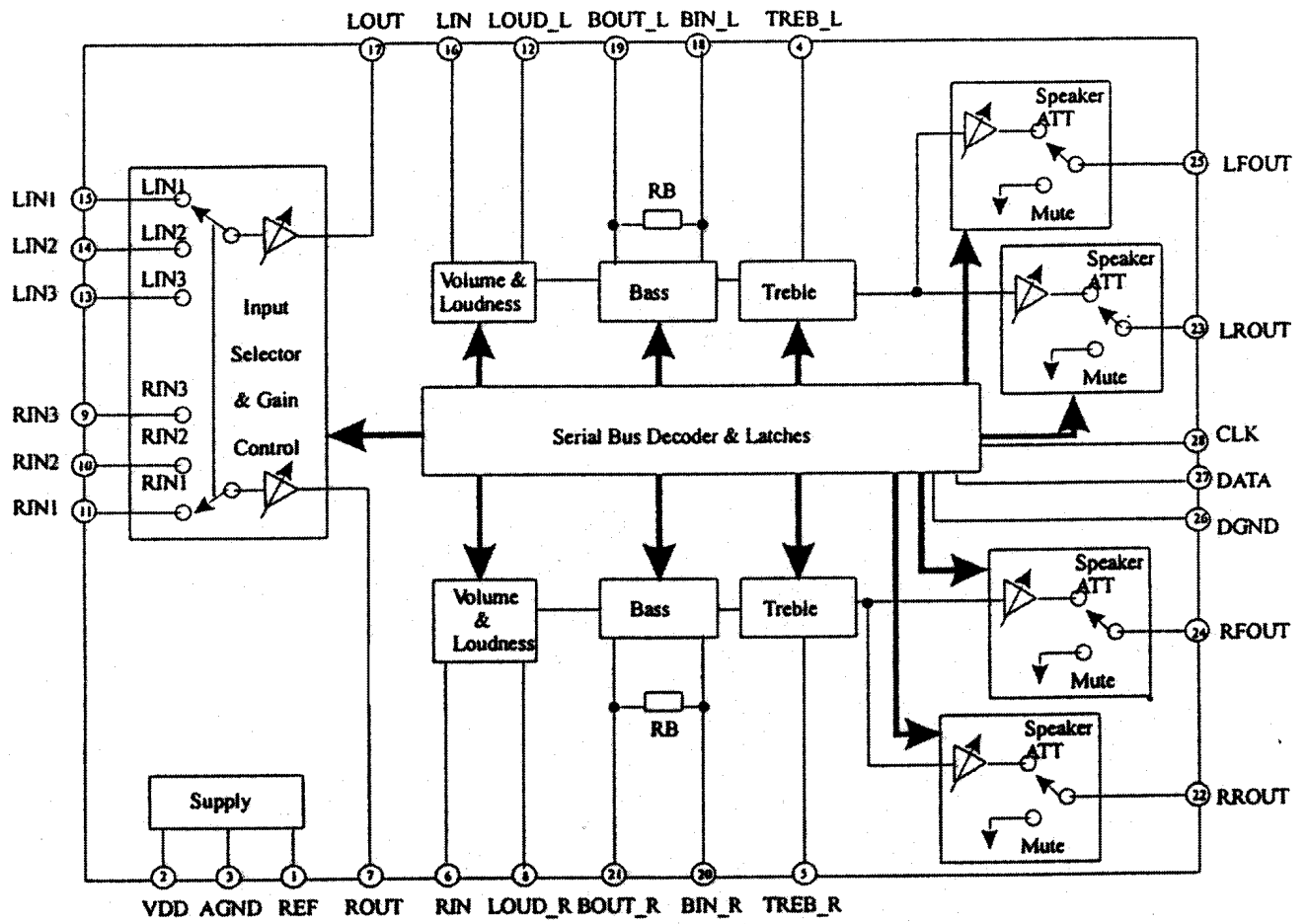
IC 200 YEAMLA3161



IC602 YEAMTC4584FN



IC270 C1EA0000041



IC205 YEAMPT2313L

11 REPLACEMENT PARTS LIST (Unit)

Note:

1. Be sure to make your orders of replacement parts according to this list.
2. Important safety notice: Component, identified by Δ mark have special characteristics important for safety when replacing any of these components, use only manufacturer's specified parts.
3. Location keys in the remarks column indicates the general location of the parts shown in the exploded drawing, as in a load map.
4. The marking (RTL) indicates that Retention Time is limited for this item. After the discontinuation of assembly in production, the item will continue to be availability is dependent on the type of assembly, and in accordance with the laws governing part and product retention. After the end of this period, the assembly will no longer be available.
5. "T" marks in remarks column are indicated supply parts of PTW.

Ref. No.	Part No.	Part Name & Description	Remarks
1. IC's and Transistors			
MAIN BLOCK [E-4C242]			
IC200	YEAMLA3161	IC	T
IC205	YEAMPT2313L	IC	T
IC270	C1EA00000041	IC	T
IC601	LC72358N9B51	IC	T
IC602	YEAMTC4584FN	IC	T
P50	CT-T02B	Tuner	T
Q51	YEANDTC144ST	Transistor	T
Q62	YEANA144EKT	Transistor	T
Q241	YEANCL43TKT	Transistor	T
Q242	YEANCL43TKT	Transistor	T
Q341	YEANCL43TKT	Transistor	T
Q342	YEANCL43TKT	Transistor	T
Q401	YEAN2SK583T	Transistor	T
Q610	YEANKRC107M	Transistor	T
Q630	YEANDTA144ST	Transistor	T
Q703	YEANKRC107M	Transistor	T
Q705	YEANA123YSAT	Transistor	T
Q707	YEANKRA226M	Transistor	T
Q708	YEAND1762EF	Transistor	T
Q710	YEANB1243QRT	Transistor	T
Q711	YEANKRC107M	Transistor	T
Q715	YEANKTC3203	Transistor	T
Q718	YEANA144EKT	Transistor	T
Q719	YEANCL144EKT	Transistor	T
Q800	YEAND1762EF	Transistor	T
DISPLAY BLOCK [E-4C243]			
IC901	YEAMLC75853NW	IC	T
Q901	YEANA114EKT	Transistor	T
2. Diodes			
MAIN BLOCK [E-4C242]			
D251	YEAD1N4005ST	Silicon Diode	T
D252	YEAD1N4005ST	Silicon Diode	T
D261	YEAD1N4005ST	Silicon Diode	T
D262	YEAD1N4005ST	Silicon Diode	T
D351	YEAD1N4005ST	Silicon Diode	T
D352	YEAD1N4005ST	Silicon Diode	T
D361	YEAD1N4005ST	Silicon Diode	T
D362	YEAD1N4005ST	Silicon Diode	T
D401	YEADMTZJ10CT	Zener Diode	T
D50	YEAD1N4148C	Diode	T
D602	YEADMTZJ82BT	Zener Diode	T
D603	YEAD1N4148C	Diode	T
D606	YEAD1N4148C	Diode	T

Ref. No.	Part No.	Part Name & Description	Remarks
D607	YEAD1N4148C	Diode	T
D627	YEAD1N4148C	Diode	T
D701	YEAD1N5404FT	Diode	T
D703	YEAD1N4005ST	Silicon Diode	T
D704	YEADMTZJ91BT	Zener Diode	T
D705	YEADMTZJ51CT	Zener Diode	T
D707	YEAD1N4005ST	Silicon Diode	T
D708	YEAD1N4148C	Diode	T
D709	YEADRD62JS3T	Zener Diode	T
D710	YEAD1N4148C	Diode	T
D711	YEAD1N4148C	Diode	T
D712	YEADRD51JS3T	Zener Diode	T
D713	YEADMTZJ75BT	Zener Diode	T
D714	MA700TA	Diode	T
D752	YEADMTZJ51CT	Zener Diode	T
D753	YEADMTZJ82BT	Zener Diode	T
D901	YEAD1N4148C	Diode	T
Z700	ERZG07DK470T	ZNR	T
DISPLAY BLOCK [E-4C243]			
D901	YEADSM1310MT	LED (GREEN)	T
D902	YEADSM1310MT	LED (GREEN)	T
D903	YEADSM1310MT	LED (GREEN)	T
D904	YEADSM1310MT	LED (GREEN)	T
D905	YEADSM1310MT	LED (GREEN)	T
D906	YEADSM1310MT	LED (GREEN)	T
D907	YEADSM1310MT	LED (GREEN)	T
D908	YEADSM1310MT	LED (GREEN)	T
D909	YEADSM1310MT	LED (GREEN)	T
D910	YEADSM1310MT	LED (GREEN)	T
D911	YEADSM1310MT	LED (GREEN)	T
D912	YEADSM1310MT	LED (GREEN)	T
D913	YEADSM1310MT	LED (GREEN)	T
D914	YEADSM1310MT	LED (GREEN)	T
D920	YEADSM1310LT	LED (RED)	T
D921	B3AFB0000162	LED GREEN (LTA673)	T
D931	MA8056LMHTX	Diode	T
D932	MA8056LMHTX	Diode	T
D933	MA8056LMHTX	Diode	T
D934	MA8056LMHTX	Diode	T
D935	MA8056LMHTX	Diode	T
3. Capacitors			
MAIN BLOCK [E-4C242]			
C51	ECEA1CKA470IV	Electrolytic 47MFD 16WV	T
C52	ECUV1H103KBN	Ceramic 0.01MFD 50WV	T
C53	ECUV1H103KBN	Ceramic 0.01MFD 50WV	T
C54	ECUV1H103KBN	Ceramic 0.01MFD 50WV	T
C55	YEU05B101K	Axial 100PF 6WV	T
C57	ECUV1H333KBN	Ceramic 0.033MFD 50WV	T
C58	ECUV1H333KBN	Ceramic 0.033MFD 50WV	T
C59	ECUV1H103KBN	Ceramic 0.01MFD 50WV	T
C60	ECUV1H103KBN	Ceramic 0.01MFD 50WV	T
C61	ECUV1H104KBM	Ceramic 0.1MFD 50WV	T
C62	ECUV1H104KBM	Ceramic 0.1MFD 50WV	T
C201	ECUV1H122KBN	Ceramic 0.0012MFD 50WV	T
C202	ECEA1CKS101IV	Electrolytic 100MFD 16WV	T
C203	ECEA1HKS010IV	Electrolytic 1MFD 50WV	T
C204	ECUV1H273KBN	Ceramic 0.027MFD 50WV	T
C232	ECEA1CKS100IV	Electrolytic 10MFD 16WV	T
C233	ECEA1HKS2R2IV	Electrolytic 2.2MFD 50WV	T
C234	ECUV1H104KBN	Ceramic 0.1MFD 50WV	T
C237	ECUV1H104KBN	Ceramic 0.1MFD 50WV	T
C238	ECUV1H272KBN	Ceramic 0.0027MFD 50WV	T
C239	ECEA1HKS3R3IV	Electrolytic 3.3MFD 50WV	T
C240	ECEA1HKS3R3IV	Electrolytic 3.3MFD 50WV	T
C241	ECEA1HKS010IV	Electrolytic 1MFD 50WV	T
C242	ECEA1HKS010IV	Electrolytic 1MFD 50WV	T
C249	ECUV1H222KBN	Ceramic 2200pF 50WV	T
C250	ECUV1H222KBN	Ceramic 2200pF 50WV	T

Ref. No.	Part No.	Part Name & Description	Remarks
C251	ECEA1HKS010IV	Electrolytic 1MFD 50WV	T
C252	ECEA1HKS010IV	Electrolytic 1MFD 50WV	T
C253	ECEA1CKS100IV	Electrolytic 10MFD 16WV	T
C259	ECUV1H103KBN	Ceramic 0.01MFD 50WV	T
C301	ECUV1H122KBN	Ceramic 0.0012MFD 50WV	T
C302	ECEA1CKS101IV	Electrolytic 100MFD 16WV	T
C303	ECEA1HKS010IV	Electrolytic 1MFD 50WV	T
C304	ECUV1H273KBN	Ceramic 0.027MFD 50WV	T
C308	ECEA1AKS221IV	Electrolytic 220MFD 10WV	T
C325	ECEA0JKS101IV	Electrolytic 100MFD 6.3WV	T
C332	ECEA1CKS100IV	Electrolytic 10MFD 16WV	T
C333	ECEA1HKS2R2IV	Electrolytic 2.2MFD 50WV	T
C334	ECUV1H104KBN	Ceramic 0.1MFD 50WV	T
C337	ECUV1H104KBN	Ceramic 0.1MFD 50WV	T
C338	ECUV1H272KBN	Ceramic 0.0027MFD 50WV	T
C339	ECEA1HKS3R3IV	Electrolytic 3.3MFD 50WV	T
C340	ECEA1HKS3R3IV	Electrolytic 3.3MFD 50WV	T
C341	ECEA1HKS010IV	Electrolytic 1MFD 50WV	T
C342	ECEA1HKS010IV	Electrolytic 1MFD 50WV	T
C349	ECUV1H222KBN	Ceramic 2200pF 50WV	T
C350	ECUV1H222KBN	Ceramic 2200pF 50WV	T
C351	ECEA1HKS010IV	Electrolytic 1MFD 50WV	T
C352	ECEA1HKS010IV	Electrolytic 1MFD 50WV	T
C353	ECEA1CKS100IV	Electrolytic 10MFD 16WV	T
C401	ECEA1VSN4R7IV	Electrolytic 4.7MFD 35WV	T
C402	ECEA1AKS101IV	Electrolytic 100MFD 10WV	T
C403	ECUV1H103KBN	Ceramic 0.01MFD 50WV	T
C408	ECUV1H102KBN	Ceramic 0.001MFD 50WV	T
C410	ECUV1H104KBN	Ceramic 0.1MFD 50WV	T
C601	ECUV1H220JCN	Ceramic 22pF 50WV	T
C602	ECUV1H220JCN	Ceramic 22pF 50WV	T
C608	ECUV1H103KBN	Ceramic 0.01MFD 50WV	T
C610	ECEA1CKS100IV	Electrolytic 10MFD 16WV	T
C612	ECEA0JKS331IV	Electrolytic 330MFD 6.3WV	T
C625	ECEA1HKS010IV	Electrolytic 1MFD 50WV	T
C630	ECEA1CKS470IV	Electrolytic 47MFD 16WV	T
C631	ECEA1HKS010IV	Electrolytic 1MFD 50WV	T
C691	YECFYH0H223	Electrolytic 22000MFD 5.5WV	T
C701	ECEA0JKS101IV	Electrolytic 100MFD 6.3WV	T
C705	ECEA1CKS100IV	Electrolytic 10MFD 16WV	T
C707	ECEA1AKS221IV	Electrolytic 220MFD 10WV	T
C708	ECEA1AKS221IV	Electrolytic 220MFD 10WV	T
C709	ECEA1CKS101IV	Electrolytic 100MFD 16WV	T
C710	ECEA1CKS101IV	Electrolytic 100MFD 16WV	T
C711	ECUV1H103KBN	Ceramic 0.01MFD 50WV	T
C715	ECEA0JKS101IV	Electrolytic 100MFD 6.3WV	T
C717	ECEA1CKS100IV	Electrolytic 10MFD 16WV	T
C718	ECEA1HKS010IV	Electrolytic 1MFD 50WV	T
C720	ECEA1CDT332Y	Electrolytic 3300MFD 16WV	T
C721	ECEA1HKS2R2IV	Electrolytic 2.2MFD 50WV	T
C722	ECEA1HKS010IV	Electrolytic 1MFD 50WV	T
C723	ECUV1H103KBN	Ceramic 0.01MFD 50WV	T
C724	ECEA1AKS470IV	Electrolytic 47MFD 10WV	T
C725	ECEA1HKS47IV	Electrolytic 0.47MFD 50WV	T
C726	ECEA1HKS47IV	Electrolytic 0.47MFD 50WV	T
C727	ECEA1CKA470IV	Electrolytic 47MFD 16WV	T
C735	ECUV1H103KBN	Ceramic 0.01MFD 50WV	T
C751	ECEA1CKS100IV	Electrolytic 10MFD 16WV	T
C755	ECEA1CKA470IV	Electrolytic 47MFD 16WV	T
DISPLAY BLOCK [E-4C243]			
C901	ECUV1H224KBN	Ceramic 0.22MFD 50WV	T
C902	ECUV1H104KBN	Ceramic 0.1MFD 50WV	T
C903	ECUV1H104KBN	Ceramic 0.1MFD 50WV	T
C904	ECUV1H102KBN	Ceramic 0.001MFD 50WV	T
4. Resistors			
MAIN BLOCK [E-4C242]			
J801	ERJ8GX0R00V	Chip 0 ohms 1/8W	T
J802	ERJ8GX0R00V	Chip 0 ohms 1/8W	T
J803	ERJ8GX0R00V	Chip 0 ohms 1/8W	T
J804	ERJ8GX0R00V	Chip 0 ohms 1/8W	T
J805	ERJ8GX0R00V	Chip 0 ohms 1/8W	T

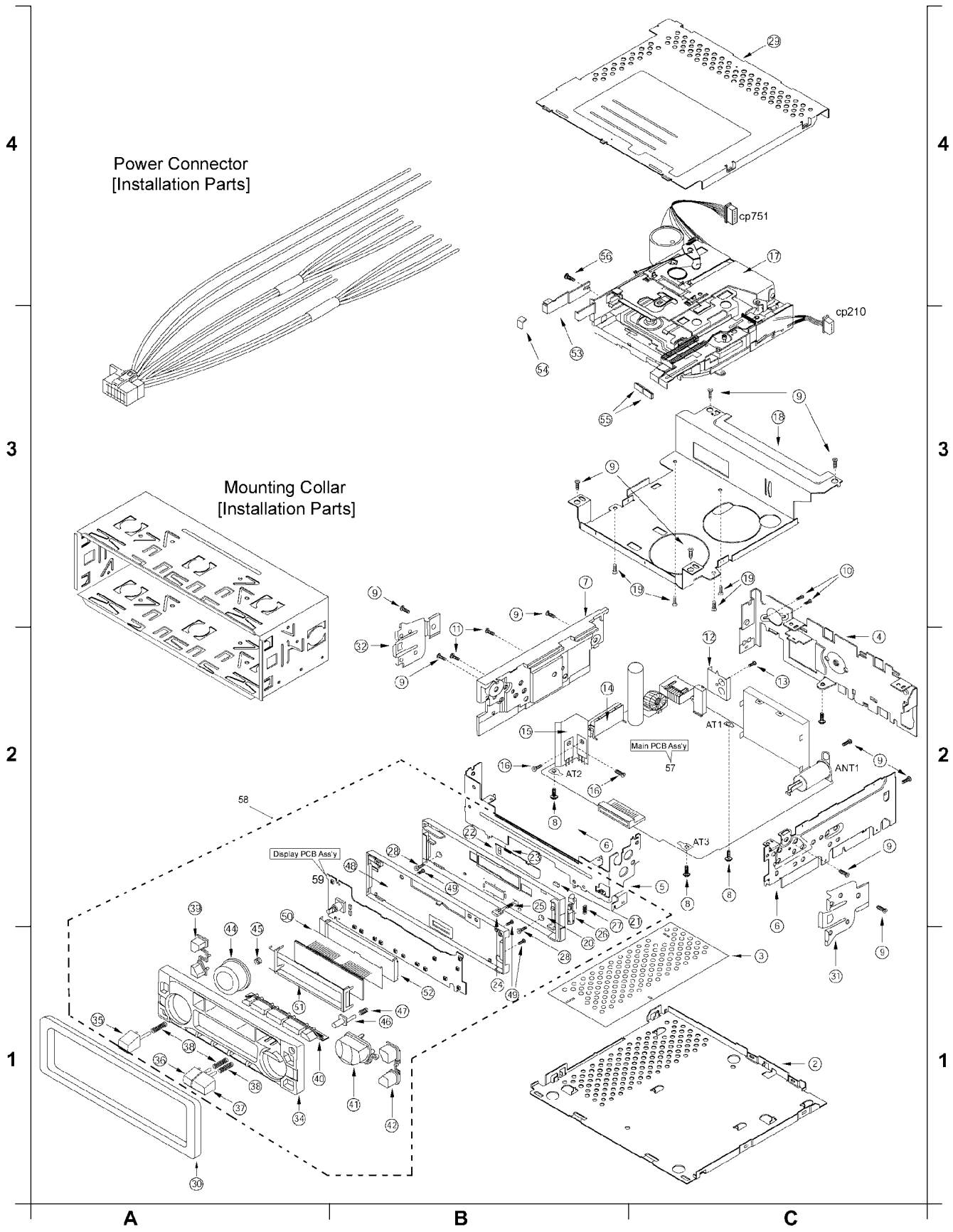
Ref. No.	Part No.	Part Name & Description	Remarks
J806	ERJ8GX0R00V	Chip 0 ohms 1/8W	T
J807	ERJ8GX0R00V	Chip 0 ohms 1/8W	T
J808	ERJ8GX0R00V	Chip 0 ohms 1/8W	T
J809	ERJ8GX0R00V	Chip 0 ohms 1/8W	T
J810	ERJ8GX0R00V	Chip 0 ohms 1/8W	T
J811	ERJ8GX0R00V	Chip 0 ohms 1/8W	T
J812	ERJ8GX0R00V	Chip 0 ohms 1/8W	T
J813	ERJ8GX0R00V	Chip 0 ohms 1/8W	T
J814	ERJ8GX0R00V	Chip 0 ohms 1/8W	T
J815	ERJ8GX0R00V	Chip 0 ohms 1/8W	T
J816	ERJ8GX0R00V	Chip 0 ohms 1/8W	T
J817	ERJ8GX0R00V	Chip 0 ohms 1/8W	T
J818	ERJ8GX0R00V	Chip 0 ohms 1/8W	T
J819	ERJ8GX0R00V	Chip 0 ohms 1/8W	T
J820	ERJ8GX0R00V	Chip 0 ohms 1/8W	T
J821	ERJ8GX0R00V	Chip 0 ohms 1/8W	T
J822	ERJ8GX0R00V	Chip 0 ohms 1/8W	T
J901	ERJ8GX0R00V	Chip 0 ohms 1/8W	T
R50	ERJ6GEYJ5R6V	Chip 5.6 ohms 1/10W	T
R51	ERJ6GEYJ472V	Chip 4.7k ohms 1/10W	T
R52	ERJ6GEYJ123V	Chip 12k ohms 1/10W	T
R53	ERJ6GEYJ221V	Chip 220 ohms 1/10W	T
R54	ERJ8GEYJ103V	Carbon 10k ohms 1/8W	T
R56	ERJ8GEYJ103V	Carbon 10k ohms 1/8W	T
R58	ERJ6GEYJ473V	Chip 47k ohms 1/10W	T
R59	ERJ6GEYJ822V	Chip 8.2k ohms 1/10W	T
R201	ERJ6GEYJ333V	Chip 33k ohms 1/10W	T
R202	ERJ6GEYJ270V	Chip 27 ohms 1/10W	T
R203	ERJ6GEYJ472V	Chip 4.7k ohms 1/10W	T
R204	ERJ6GEYJ124V	Chip 120k ohms 1/10W	T
R225	ERD25TJ822T	Carbon 8.2k ohms 1/4W	T
R226	ERJ6GEYJ472V	Chip 4.7k ohms 1/10W	T
R241	ERJ6GEYJ103V	Chip 10k ohms 1/10W	T
R242	ERJ6GEYJ103V	Chip 10k ohms 1/10W	T
R243	ERJ8GEYJ471V	Chip 470 ohms 1/8W	T
R250	ERJ6GEYJ562V	Chip 5.6k ohms 1/10W	T
R253	ERD25TJ472T	Carbon 4.7k ohms 1/4W	T
R263	ERJ6GEYJ101V	Chip 100 ohms 1/10W	T
R264	ERJ6GEYJ101V	Chip 100 ohms 1/10W	T
R271	ERD25TJ101T	Carbon 100 ohms 1/4W	T
R272	ERD25TJ101T	Carbon 100 ohms 1/4W	T
R281	ERJ6GEYJ223V	Chip 22k ohms 1/10W	T
R282	ERJ6GEYJ223V	Chip 22k ohms 1/10W	T
R301	ERJ6GEYJ333V	Chip 33k ohms 1/10W	T
R302	ERJ6GEYJ270V	Chip 27 ohms 1/10W	T
R303	ERJ6GEYJ472V	Chip 4.7k ohms 1/10W	T
R304	ERJ6GEYJ124V	Chip 120k ohms 1/10W	T
R309	ERJ8GEYJ221V	Chip 220 ohms 1/8W	T
R325	ERD25TJ822T	Carbon 8.2k ohms 1/4W	T
R326	ERJ6GEYJ472V	Chip 4.7k ohms 1/10W	T
R338	ERD25TJ102T	Carbon 1k ohms 1/4W	T
R339	ERD25TJ102T	Carbon 1k ohms 1/4W	T
R341	ERJ6GEYJ103V	Chip 10k ohms 1/10W	T
R342	ERJ6GEYJ103V	Chip 10k ohms 1/10W	T
R343	ERJ8GEYJ471V	Chip 470 ohms 1/8W	T
R350	ERJ6GEYJ562V	Chip 5.6k ohms 1/10W	T
R353	ERD25TJ472T	Carbon 4.7k ohms 1/4W	T
R363	ERJ6GEYJ101V	Chip 100 ohms 1/10W	T
R364	ERJ6GEYJ101V	Chip 100 ohms 1/10W	T
R371	ERD25TJ101T	Carbon 100 ohms 1/4W	T
R372	ERD25TJ101T	Carbon 100 ohms 1/4W	T
R381	ERJ6GEYJ223V	Chip 22k ohms 1/10W	T
R382	ERJ6GEYJ223V	Chip 22k ohms 1/10W	T
R401	ERJ8GEYJ472V	Chip 4.7k ohms 1/8W	T
R404	ERDS2TJ152T	Carbon 1.5k ohms 1/4W	T
R405	ERJ6GEYJ152V	Chip 1.5k ohms 1/10W	T
R406	ERJ8GEYJ152V	Carbon 1.5k ohms 1/8W	T
R407	ERJ6GEYJ471V	Chip 470 ohms 1/10W	T
R408	ERD25TJ181T	Carbon 180 ohms 1/4W	T
R603	ERJ6GEYJ473V	Chip 47k ohms 1/10W	T
R604	ERJ6GEYJ473V	Chip 47k ohms 1/10W	T
R606	ERD25TJ102T	Carbon 1k ohms 1/4W	T
R611	W5NL	Jump 5mm	T

Ref. No.	Part No.	Part Name & Description	Remarks
R614	ERDS2TJ473T	Carbon 47k ohms 1/4W	T
R615	ERD25TJ473T	Carbon 47k ohms 1/4W	T
R616	ERDS2TJ473T	Carbon 47k ohms 1/4W	T
R617	ERJ6GEYJ473V	Chip 47k ohms 1/10W	T
R618	ERD25TJ102T	Carbon 1k ohms 1/4W	T
R619	ERJ6GEYJ473V	Chip 47k ohms 1/10W	T
R621	ERDS2TJ183T	Carbon 18k ohms 1/4W	T
R623	ERJ6GEYJ563V	Chip 56k ohms 1/10W	T
R624	ERJ6GEYJ473V	Chip 47k ohms 1/10W	T
R626	ERJ6GEYJ472V	Chip 4.7k ohms 1/10W	T
R628	ERJ6GEYJ333V	Chip 33k ohms 1/10W	T
R629	ERJ6GEYJ104V	Chip 100k ohms 1/10W	T
R630	ERD25TJ102T	Carbon 1k ohms 1/4W	T
R636	ERJ6GEYJ103V	Chip 10k ohms 1/10W	T
R637	ERJ6GEYJ103V	Chip 10k ohms 1/10W	T
R638	ERJ6GEYJ472V	Chip 4.7k ohms 1/10W	T
R642	ERJ6GEYJ103V	Chip 10k ohms 1/10W	T
R643	ERJ6GEYJ223V	Chip 22k ohms 1/10W	T
R648	ERJ6GEYJ473V	Chip 47k ohms 1/10W	T
R650	ERDS2TJ102T	Carbon 1k ohms 1/4W	T
R654	ERJ6GEYJ473V	Chip 47k ohms 1/10W	T
R655	ERJ6GEYJ473V	Chip 47k ohms 1/10W	T
R656	ERJ6GEYJ473V	Chip 47k ohms 1/10W	T
R691	ERJ6GEYJ102V	Chip 1k ohms 1/10W	T
R692	ERJ6GEYJ102V	Chip 1k ohms 1/10W	T
R693	ERJ6GEYJ102V	Chip 1k ohms 1/10W	T
R694	ERJ6GEYJ102V	Chip 1k ohms 1/10W	T
R695	ERD25TJ102T	Carbon 1k ohms 1/4W	T
R696	ERD25TJ102T	Carbon 1k ohms 1/4W	T
R697	ERD25TJ102T	Carbon 1k ohms 1/4W	T
R698	ERD25TJ102T	Carbon 1k ohms 1/4W	T
R699	ERJ6GEYJ102V	Chip 1k ohms 1/10W	T
R700	ERD25TJ102T	Carbon 1k ohms 1/4W	T
R701	ERD25TJ102T	Carbon 1k ohms 1/4W	T
R705	ERD25FJ331T	Carbon 330 ohms 1/4W	T
R721	ERD25FJ5R6T	Carbon 5.6 ohms 1/4W	T
R722	ERD25TJ331T	Carbon 330 ohms 1/4W	T
R723	ERD25FJ5R6T	Carbon 5.6 ohms 1/4W	T
R725	ERDS2TJ221T	Carbon 220 ohms 1/4W	T
R727	ERJ6GEYJ473V	Chip 47k ohms 1/10W	T
R728	ERDS1FJ681T	Carbon 680 ohms 1/2W	T
R729	ERDS1FJ681T	Carbon 680 ohms 1/2W	T
R736	ERJ6GEYJ105V	Carbon 1M ohms 1/10W	T
R737	ERJ8GEYJ472V	Chip 4.7k ohms 1/8W	T
R738	ERDS2TJ330T	Carbon 33 ohms 1/4W	T
R739	ERJ6GEYJ562V	Chip 5.6k ohms 1/10W	T
R740	ERD25TJ472T	Carbon 4.7k ohms 1/4W	T
R751	ERD25FJ2R7T	Carbon 2.7 ohms 1/4W	T
R752	ERJ6GEYJ103V	Chip 10k ohms 1/10W	T
DISPLAY BLOCK [E-4C243]			
J901	ERJ8GX0R00V	Chip 0 ohms 1/8W	T
J902	ERJ8GX0R00V	Chip 0 ohms 1/8W	T
J903	ERJ8GX0R00V	Chip 0 ohms 1/8W	T
J904	ERJ8GX0R00V	Chip 0 ohms 1/8W	T
J905	ERJ8GX0R00V	Chip 0 ohms 1/8W	T
J906	ERJ8GX0R00V	Chip 0 ohms 1/8W	T
J907	ERJ8GX0R00V	Chip 0 ohms 1/8W	T
J908	ERJ8GX0R00V	Chip 0 ohms 1/8W	T
J909	ERJ6GEY0R00V	Chip 0 ohms 1/10W	T
J910	ERJ8GX0R00V	Chip 0 ohms 1/8W	T
J911	ERJ8GX0R00V	Chip 0 ohms 1/8W	T
J920	ERJ6GEY0R00V	Chip 0 ohms 1/10W	T
J940	ERJ6GEY0R00V	Chip 0 ohms 1/10W	T
J941	ERJ6GEY0R00V	Chip 0 ohms 1/10W	T
J943	ERJ8GX0R00V	Chip 0 ohms 1/8W	T
J948	ERJ8GX0R00V	Chip 0 ohms 1/8W	T
J949	ERJ8GX0R00V	Chip 0 ohms 1/8W	T
R901	ERJ6GEYJ221V	Chip 220 ohms 1/10W	T
R902	ERJ6GEYJ181V	Chip 180 ohms 1/10W	T
R903	ERJ6GEYJ181V	Chip 180 ohms 1/10W	T
R904	ERJ6GEYJ181V	Chip 180 ohms 1/10W	T
R905	ERJ6GEYJ331V	Chip 330 ohms 1/10W	T

Ref. No.	Part No.	Part Name & Description	Remarks
R906	ERJ6GEYJ331V	Chip 330 ohms 1/10W	T
R907	ERJ6GEYJ681V	Chip 680 ohms 1/10W	T
R909	ERJ6GEYJ681V	Chip 680 ohms 1/10W	T
R910	ERJ6GEYJ103V	Chip 10k ohms 1/10W	T
R911	ERJ6GEYJ473V	Chip 47k ohms 1/10W	T
R912	ERJ6GEYJ4R7V	Chip 4.7 ohms 1/10W	T
R928	ERJ6GEYJ103V	Chip 10k ohms 1/10W	T
5. Connectors			
MAIN BLOCK [E-4C242]			
CN210	YEAE2011P05	Connector	T
CN350	YEAER120002	Connector (RCA)	T
CN601	YEAE012475	Connector	T
CN680	YEAE4CDIN023	Connector	T
CN701	K1FA116B0028	Connector	T
CN751	YEAE2011P06	Connector	T
DISPLAY BLOCK [E-4C243]			
CN901	YEAE012476	Connector	T
6. Electric Parts			
SWITCHES			
SW902	K0H1BA000445	Tack Swich	T
SW903	K0H1BA000445	Tack Swich	T
SW905	K0H1BA000445	Tack Swich	T
SW909	K0H1BA000445	Tack Swich	T
SW911	K0H1BA000445	Tack Swich	T
SW912	K0H1BA000445	Tack Swich	T
SW913	K0H1BA000445	Tack Swich	T
SW914	K0H1BA000445	Tack Swich	T
SW916	K0H1BA000445	Tack Swich	T
SW917	K0H1BA000445	Tack Swich	T
SW918	K0H1BA000445	Tack Swich	T
SW919	K0H1BA000445	Tack Swich	T
SW920	K0H1BA000445	Tack Swich	T
SW921	K0H1BA000445	Tack Swich	T
LCD			
LCD901	YEXDCM4C099A	LCD	T
CRYSTAL			
XL601	YEXL4C45TT	Crystal	T
COILS			
L101	YELT02C470KT	Axial Coil	T
L102	YELT02C101KT	Axial Coil	T
L700	YETQ024C055V	Choke Coil	T
SURGE PROTECTOR			
Z51	YEADYP201M	Surge Protector	T
POSISTOR			
PT701	YERT7AR4R7MT	Posistor	T
VR			
VR901	K9AA024A0007	ENCODE VR	T
7. Accessories			
INSTALLATION PARTS			
	FX0214C316ZA	Mounting Collar	T
	YAJ024C115ZA	Power Connector	T
	YFC054C061ZA	Unit Case	T
	YFG044C002ZA	Rear Support Strap	T
8. Mechanical Parts			
MISCELLANEOUS			
ANT1	YAA104C700ZA	ANT Jack	T(2-C)
AT1	YAT034C009ZA	Terminal	T(2-C)
AT2	YAT034C009ZA	Terminal	T(2-B)
AT3	YAT034C009ZA	Terminal	T(2-C)
CP210	YEAE11H4105A	Connector	T(3-C)
CP751	YEAE1661801C	Connector (Deck)	T(4-C)
2	YFA054C036YA	Under Cover	T(1-C)

Ref. No.	Part No.	Part Name & Description	Remarks
3	YFV014C068ZA	Sheet	T(1-C)
4	YFA084C042ZA	Rear Plate	T(3-C)
5	YFA074C046ZA	Front Plate	T(2-B)
6	YFA094C091ZA	Right Plate	T(2-C)
7	YFF014C047ZA	Heat Sink	T(3-B)
8	YEJT034C001	Screw	T(2-C)
9	XTB3+6FFXS	Screw	T(3-B); T(3-C); T(2-C)
10	XSB3+6FXS	Screw	T(3-C)
11	YEJT034C019	Screw(Cup Tight 3x12)	T(3-B)
12	FX0214C320ZA	RCA Bkt	T(3-C)
13	XTB26+8G	Screw	T(3-C)
14	FX0214C172WA	IC Bracket	T(2-B)
15	FX0214C322ZA	Tr Bkt	T(2-B)
16	YJS064C002ZA	Screw (m3x8)	T(2-B)
17	YEFD044C026A	Deck Mechanism	T(3-C)
18	FX0214C325ZA	Deck Bracket	T(3-C)
19	XSB26+4FX	Screw	T(3-C)
20	YFC024C596ZA	Esc Holder	T(2-B)
21	YEFS011113	Pad	T(2-B)
22	YFX024C054ZB	Cast Cover	T(2-B)
23	FX0054C045ZA	Spring(Cast)	T(2-B)
24	YFE134C440ZA	Push Button	T(2-B)
25	FX0054C058ZA	Spring (Push Button)	T(2-B)
26	YEFX9991682A	Release Hook	T(2-B)
27	FX0054C049ZA	Spring(Hook)	T(2-B)
28	YJT034C015CA	Step Screw	T(2-B)
29	YFA034C044ZA	Upper Cover	T(4-C)
30	YFC054C059ZA	Trim Plate(Print)	T(1-A)
31	YFX054C051ZA	Spring Plate(R)	T(2-C)
32	YFX054C052ZA	Spring Plate(L)	T(3-B)
34	YFC034C010ZA	Esc Front Cover	T(1-A)
35	YFE134C425ZA	Button (Eject)	T(1-A)
36	YFE134C427ZA	Button (REW)	T(1-A)
37	YFE134C426ZA	Button (FF)	T(1-A)
38	FX0054C056ZA	Spring	T(1-A)
39	YFE134C433ZA	Button(Band/Pwr)	T(2-A)
40	YFE134C432ZA	Button (Preset)	T(1-A)
41	YFE134C431ZA	Button(Tune/Track)	T(1-B)
42	YFE134C430ZA	Button(CD.C/Disp)	T(1-B)
44	YFE074C057ZA	Vol Knob	T(2-A)
45	YFX054C053ZA	Spring (Knob)	T(2-A)
46	YFE134C419ZA	Button(Release)	T(1-B)
47	FX0054C055ZA	Spring (Open)	T(1-B)
48	YFC024C595ZA	Rear Cover	T(2-B)
49	XTN2+8GFZ	Screw (Esc)	T(2-B)
50	YFV024C080ZA	Sheet(LCD)	T(2-B)
51	YFX214C315YA	LCD Bracket	T(2-B)
52	YEFX0012300	Back light assy	T(2-B)
53	FX0464C013YA	Eject Lever	T(4-B)
54	YFE134C148ZA	Eject Lever Holder	T(3-B)
55	YFE134C149ZA	Lever Holder	T(3-C)
56	YEJT034C007	Screw	T(4-B)
57	AAPB242B0-J	Main PCB Ass'y	T(2-C)/ RTL
58	ESCRG133W1J	ESC Unit Ass'y	T(1-A); T(2-B)/ RTL
59	APCB243B1-J	Key PCB Ass'y	T(2-B)/ RTL

12 EXPLODED VIEW (Unit)



13 REPLACEMENT PARTS LIST (Tape Player Parts)

Note:

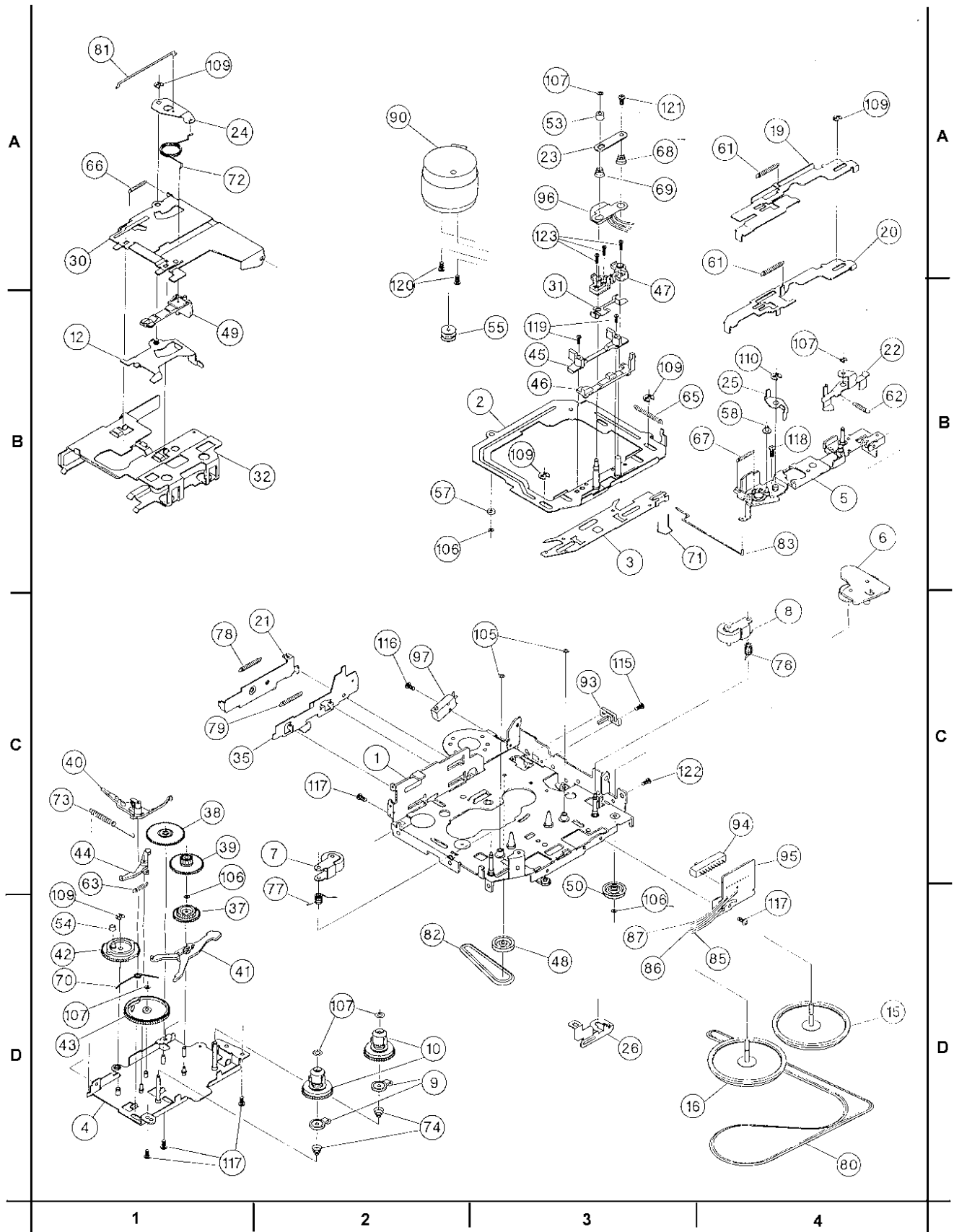
1. Be sure to make your orders of replacement parts according to this list.
2. Important safety notice: Component, identified by Δ mark have special characteristics important for safety. when replacing any of these components, use only manufacturer's specified parts.
3. Location keys in the remarks column indicates the general location of the parts shown in the exploded drawing, as in a load map.
4. "T" marks in remarks column are indicated supply parts of PTW.

Ref. No.	Part No.	Part Name & Description	Remarks
MISCELLANEOUS			
1	X-0363-1001	Main Chassis Ass'y	(C-2)
2	X-0363-1002	Head Plate Ass'y	(B-3)
3	X-0363-1004	FR Convert Arm(A) Ass'y	(B-3)
4	X-0363-6001	Reel Base Ass'y	(D-1)
5	X-0363-6002	Lever Bracket Ass'y	(B-4)
6	X-0363-6003	TU Gear Arm Ass'y	(B-4)
7	X-0363-6004	Pinch Arm(R)Ass'y	(C-2)
8	X-0363-6005	Pinch Arm(F)Ass'y	(C-4)
9	X-0363-6006	Detector Cam Ass'y	(D-2)
10	X-0363-2005	Reel Spindle Ass'y	(D-2)
11			
12	X0036-1019	Eject Cam Lock Ass'y	(B-1)
13			
14			
15	X-0363-6010	Flywheel Ass'y(F)CPL	T(D-4)
16	X-0363-6011	Flywheel Ass'y(R)CPL	T(D-4)
17			
18			
19	X0036-1051	FF Lever (AT)	(A-4)
20	X0036-1053	Rew Leaver(AT)	(A-4)
21	X0036-1007	Eject Leaver	(C-2)
22	X0036-1029	Lock Arm(A)	(B-4)
23	X0036-1015	Spg Support Plate	(A-3)
24	X0036-1018	Center Plate	(A-1)
25	X0036-1023	Changer Lever (B)	(B-4)
26	X0036-1026	FR Arm(B)	(D-3)
27			
28			
29			
30	1-0138-1002	Cassette Hanger(X)	(A-1)
31	1-0138-1006	Adjuster Shim(X)	(B-3)
32	1-0138-1010		(B-1)
33			
34			
35	1-0363-1003	Eject Cam	(C-1)
36			
37	1-0036-2001	Idle Gear	(D-1)
38	1-0036-2003	Reduction Gear (B)	(C-1)
39	1-0036-2004	Reduction Gear (A)	(C-1)
40	1-0036-2007	Ratchet	(C-1)
41	1-0036-2009	Sensor Arm	(D-1)
42	1-0036-2010	Selector Gear	(D-1)
43	1-0036-2014	Detector Gear	(D-1)
44	1-0038-2014	Gear Lock Arm	(C-1)
45	1-0038-2018	Tape Guide	(B-3)
46	1-0363-2006	Adjuster Link(B)	(B-3)
47	1-0138-2005-3	Adjuster Arm Blue	(B-3)
48	1-0036-2005	Pulley Gear	(D-3)
49	1-0032-2007	Tape Hooker	(B-1)
50	1-0058-2021-5	Idle Pulley(A)	(C-3)
51			

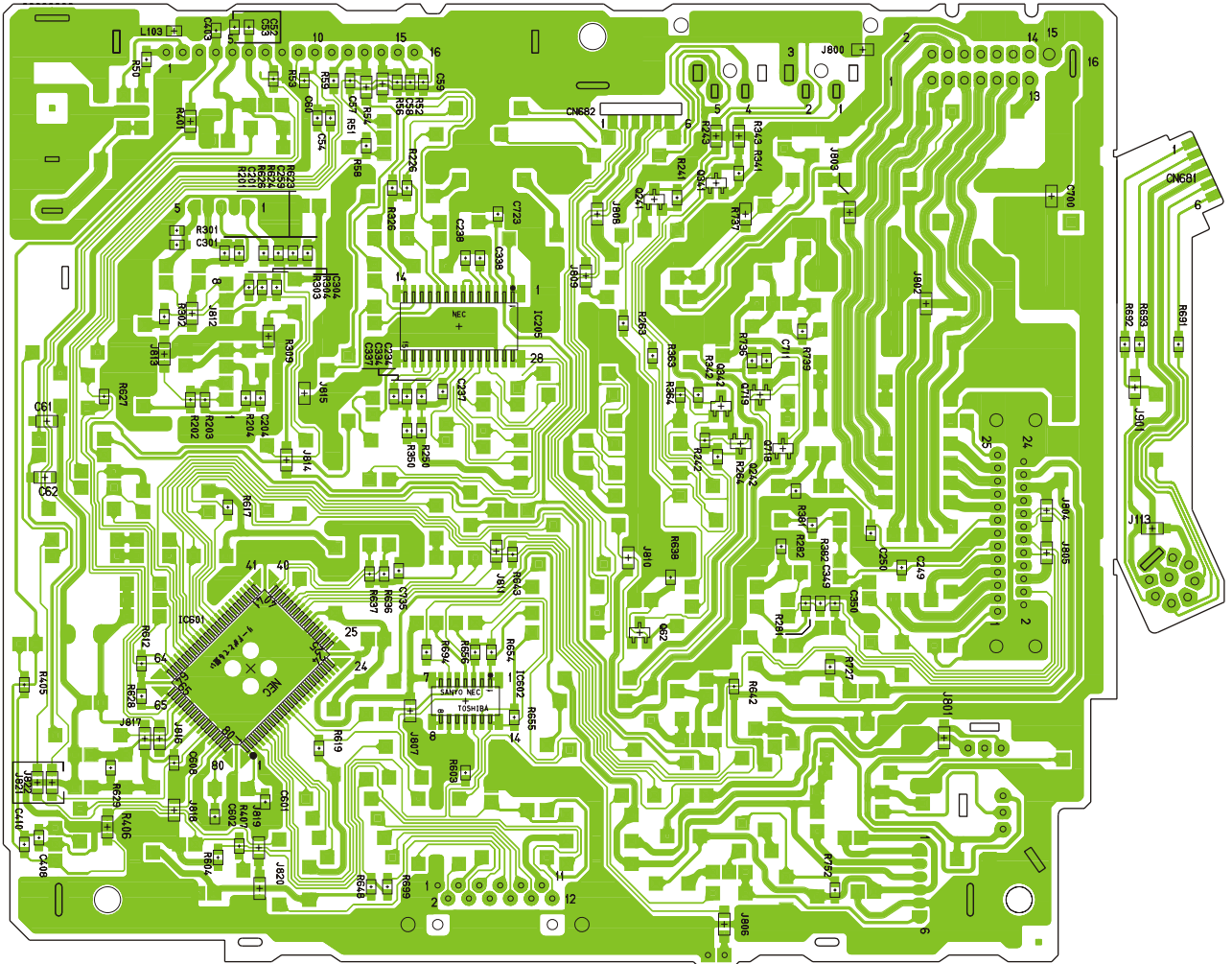
Ref. No.	Part No.	Part Name & Description	Remarks
52			
53	1-0036-3032	FF Roller(A)	(A-3)
54	1-0036-3018	Collar(Selector Gear)	(D-1)
55	1-0363-3042	Motor Pully(MBC)	(B-2)
56			
57	1-0363-3007	HP Roller(A)	(B-3)
58	1-0363-3011	Program Roller	(B-4)
59			
60			
61	1-0036-4001	FF/REW Lever SPG	(A-4)
62	1-0036-4002	Lock Lever SPG	(B-4)
63	1-0036-4003	Gear Lock Arm SPG	(C-1)
64			
65	1-0036-4006	Head Plate SPG	(B-3)
66	1-0036-4007	Eject Cam Lock SPG	(A-1)
67	1-0036-4008	Program Arm SPG	(B-4)
68	1-0036-4010	Adjuster Arm SPG(A)	(A-3)
69	1-0036-4011	Adjuster Arm SPG(B)	(A-3)
70	1-0036-4015	Dash SPG	(D-1)
71	1-0036-4017	SW Select Arm SPG	(B-3)
72	1-0036-4023	Center Plate SPG(B)	(A-1)
73	1-0038-4014	Ratchet SPG	(C-1)
74	1-0138-4001	Back Tension SPG	(D-2)
75			
76	1-0363-4003	Pinch Arm SPG(F)	(C-4)
77	1-0363-4004	Pinch Arm SPG(R)	(C-2)
78	1-0363-4005	Eject Leaver SPG	(C-1)
79	1-0363-4006	Eject Cam SPG	(C-1)
80	1-0036-5004	Main Belt	T(D-4)
81	1-0363-5007	Return Link	(A-1)
82	1-0363-5001	SUB Belt	T(D-2)
83	1-0363-5003	Selector Link (B)	(B-4)
84			
85	1-0036-7002	Wire(A)Black 60mm	(D-4)
86	1-0036-7003	Wire(B)Red 60mm	(D-3)
87	1-0036-7073	Wire(AL)Yellow 60mm	(D-3)
88			
89			
90	1-0036-7057	Motor	T(A-2)
91			
92			
93	1-0363-7001	Mute SW	(C-3)
94	1-0363-7002	Slide SW	(C-4)
95	1-0363-7003	Slide SW PWB	(C-4)
96	1-0363-7004	Head	T(A-3)
97	1-0363-7005	Power SW	(C-2)
98			
99			
100			
101			
102			
103			
104			
105	2-1816-0032-E8	LMW-S	(C-3)
106	2-1812-0030-D2	PSW-S	(B-3)
107	2-0036-5024	PSW(Reel)B	(A-3)
108			
109	2-1712-0050-16	E-Ring	(A-4)
110	2-1712-5060-16	E-Ring	(B-4)
111			
112			
113			
114			
115	2-1331-7040-C2	Screw (M1.7x4)	(C-3)
116	2-1331-7060-C2	Screw (M1.7x6)	(C-2)

Ref. No.	Part No.	Part Name & Description	Remarks
117	2-1382-0030-C2	Screw (M2x3)	(D-1)
118	2-1332-0040-C1	Screw (M2x4)	(B-4)
119	2-1032-0070-C2	Screw (M2x7)	(B-3)
120	2-1032-0025-C2	Screw (M2x2.5)	(A-1)
121	2-1012-0040-C2	Screw (M2x4)	(A-3)
122	2-1012-0030-F2	Screw (M2x3)	(C-3)
123	1-0138-5002	Screw (M2x5)	(A-3)

14 EXPLODED VIEW (Tape Deck)



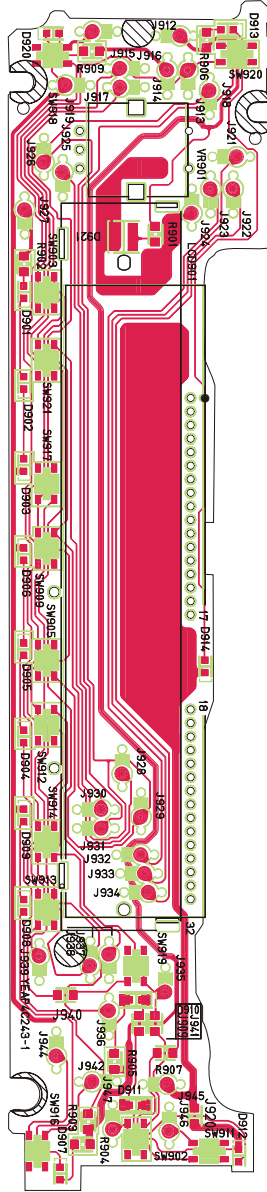
15.2. Main Block-2



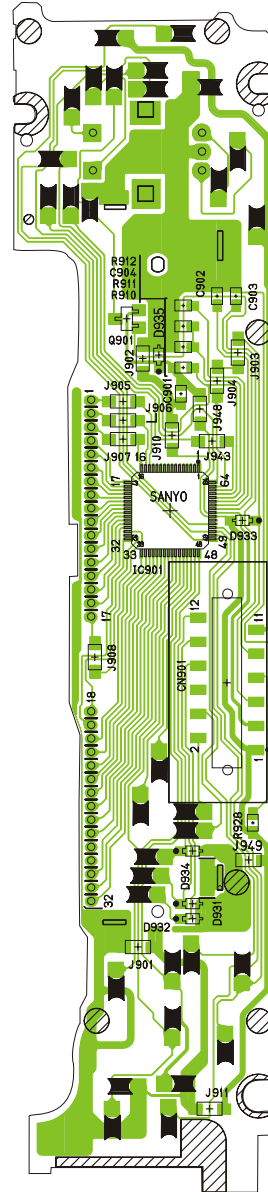
[E-4C242] [BOTTOM VIEW]

CQ-RG153U/RG133W/RG133W1 MAIN PCB

15.3. Display Block



[E-4C243] [TOP VIEW]

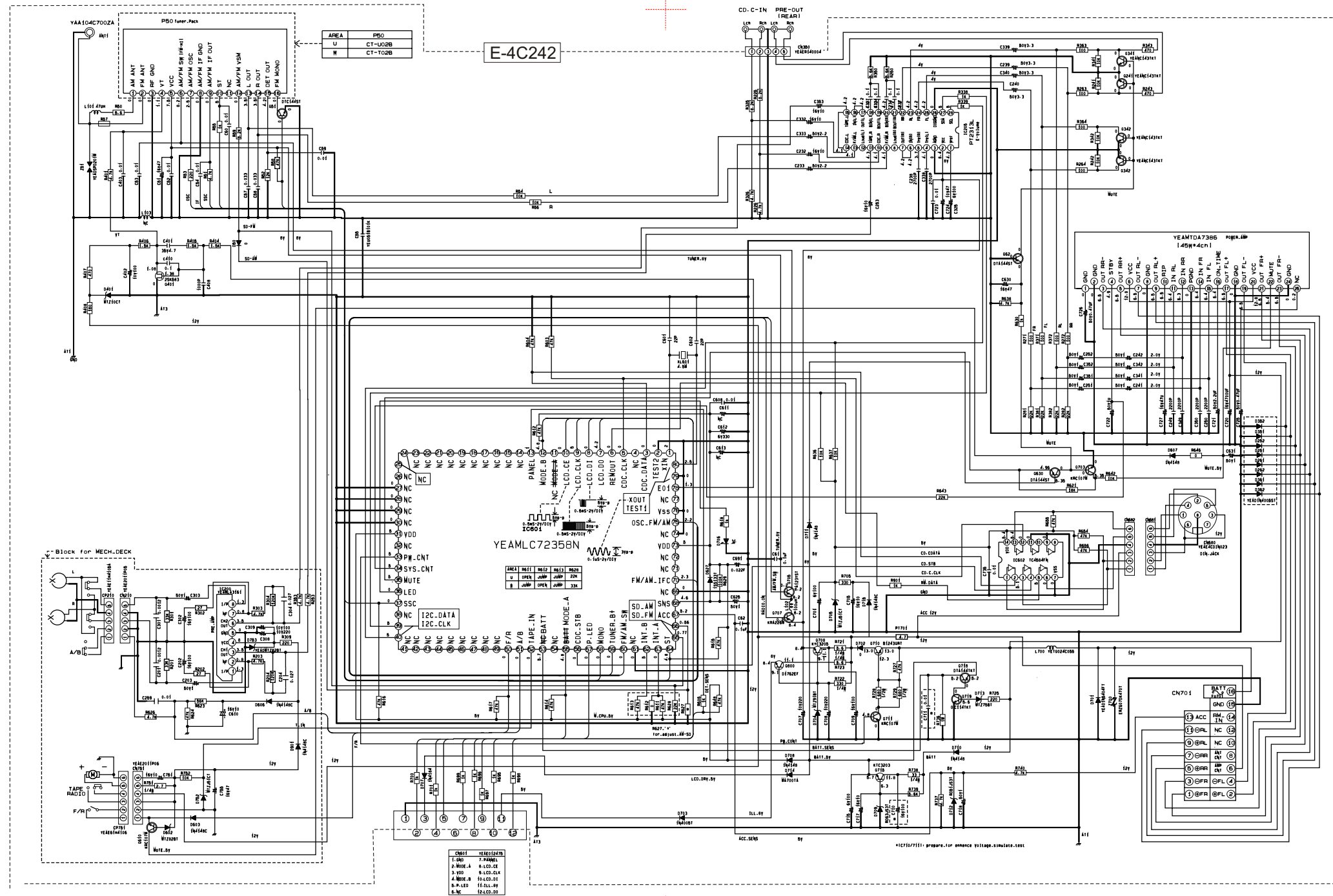


[E-4C243] [BOTTOM VIEW]

CQ-RG153U/RG133W/RG133W1 Display PCB

16 SCHEMATIC DIAGRAM

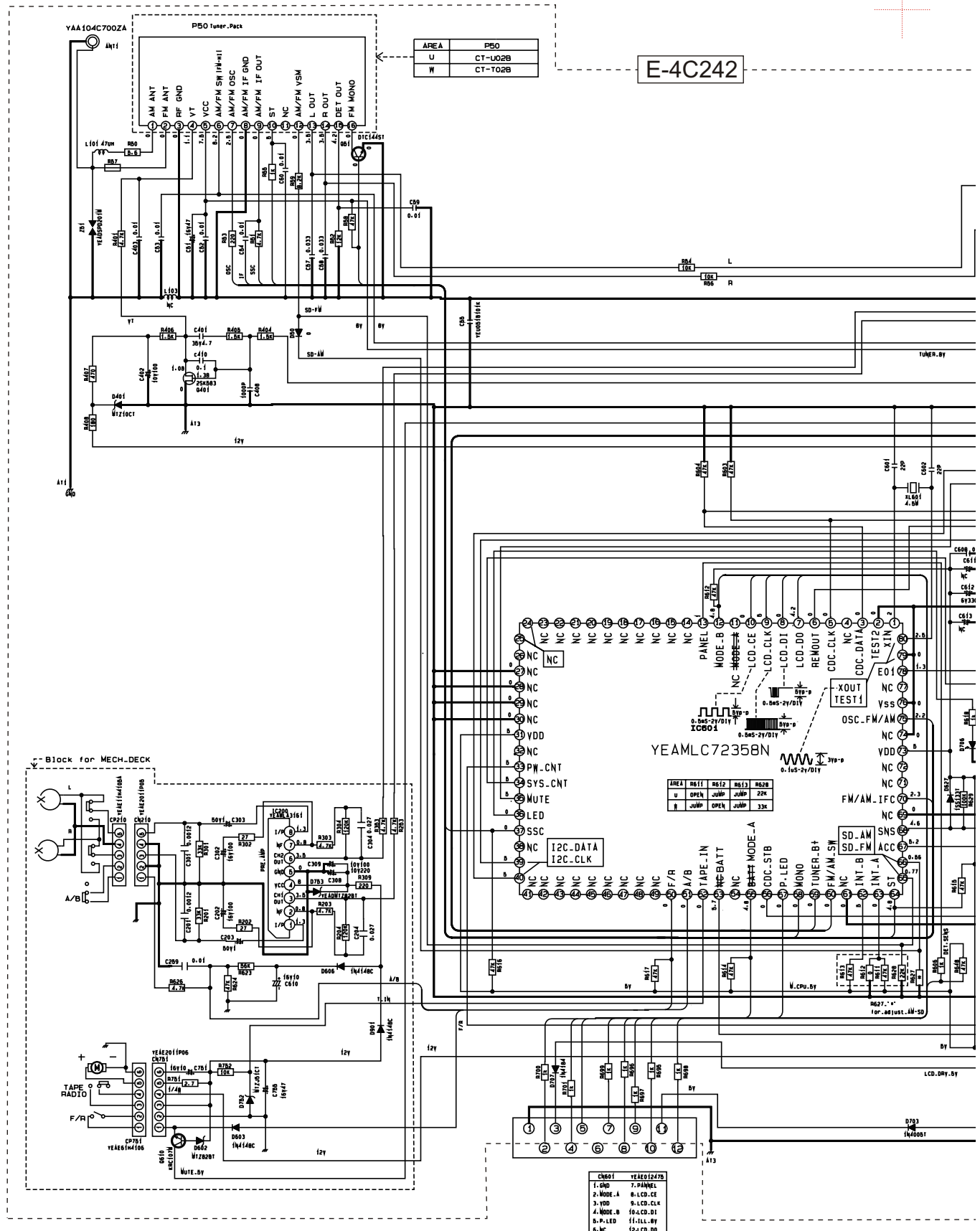
16.1. Main Block



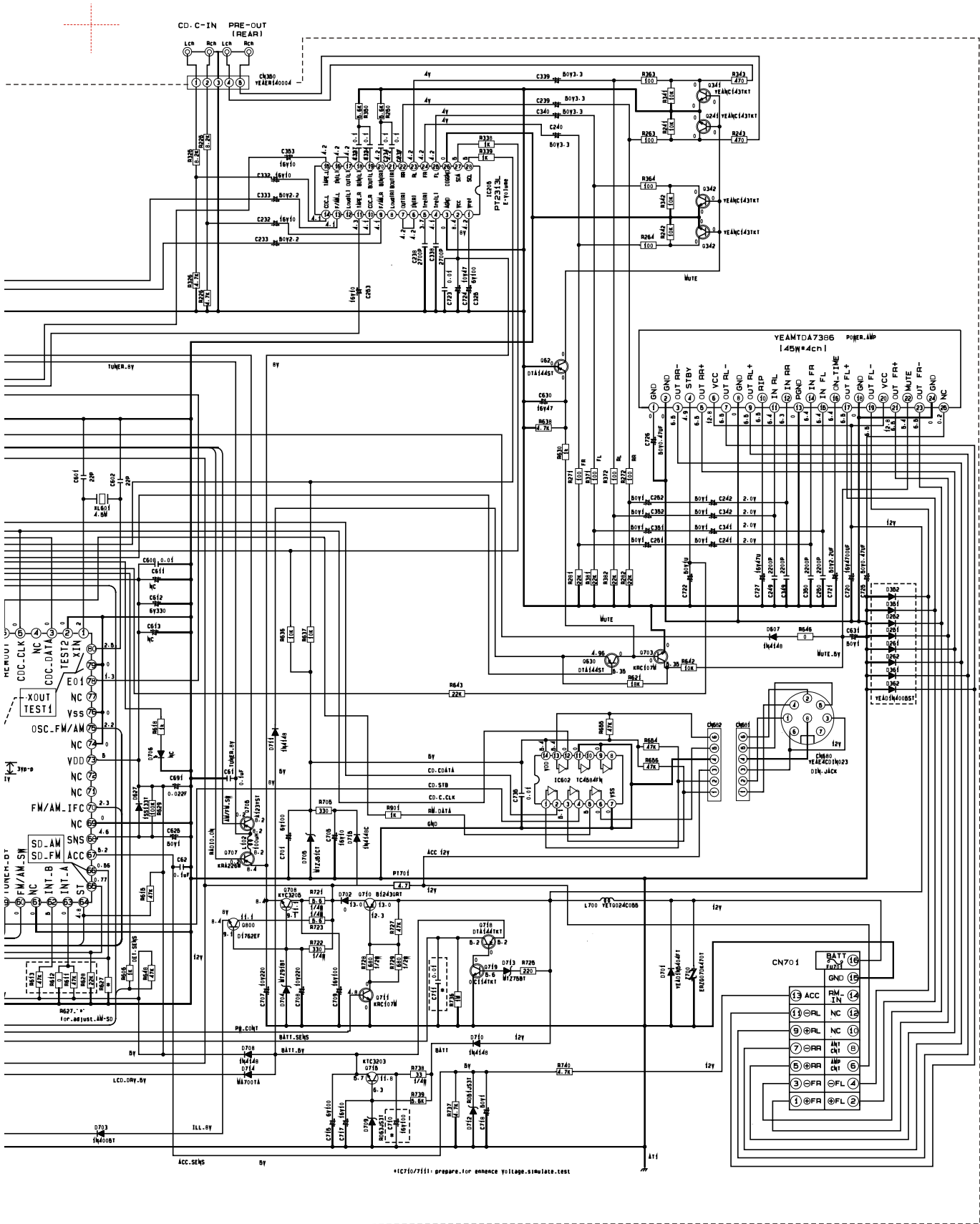
CQ-RG153U/RG133W/RG133W1 Main Block

17 SCHEMATIC DIAGRAM for printing with A4 size

17.1. Main Block (Left Side)



17.2. Main Block (Right Side)



CQ-RG153U/RG133W/RG133W1 Main Block