

Nokia 108, Nokia 108 DS

RM-944, RM-945

Key features

- 1.8" QQVGA Display
- MicroSD memory card support up to 32GB
- VGA Camera
- Torch light

Version 1.0

Check the repair
policy before
performing any
mechanical repair
on Service Level
1&2!



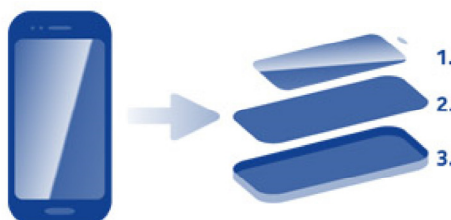
Exploded view



More



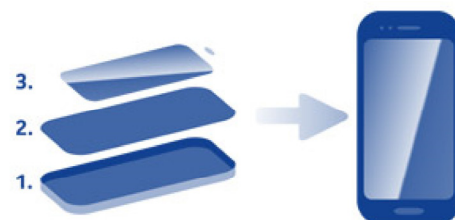
Disassembly steps



More



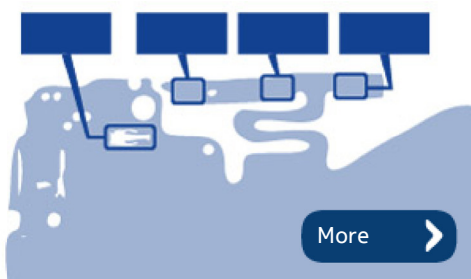
Assembly hints



More



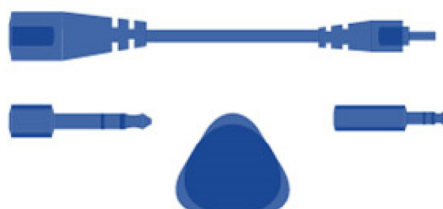
Solder components



More



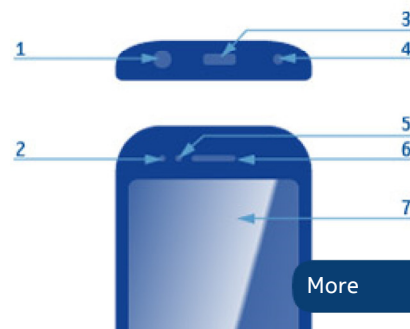
Service devices



More



Product controls and interfaces



More

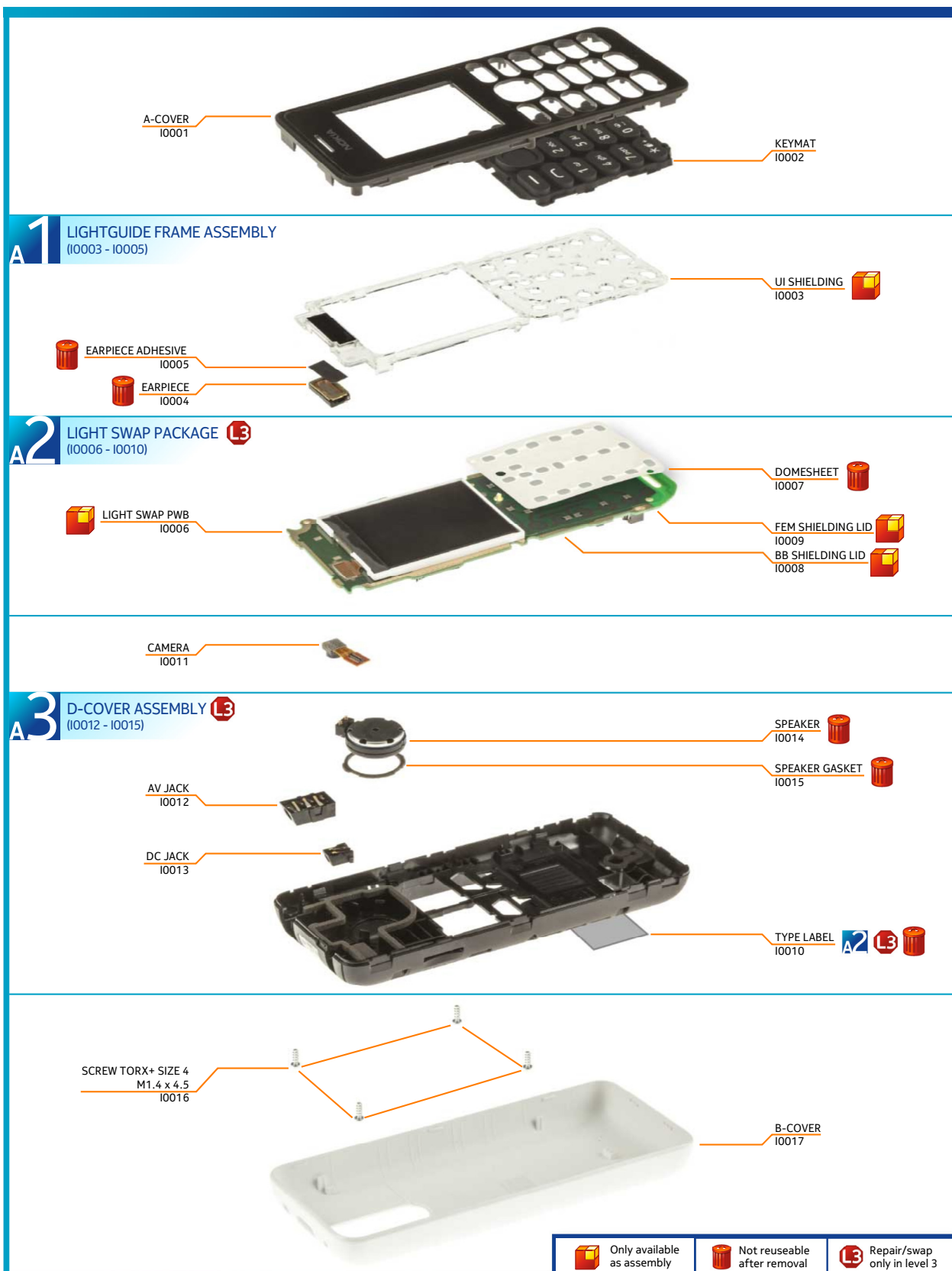


Service concept



More







1) For disassembling you need the Nokia Standard toolkit version 2.

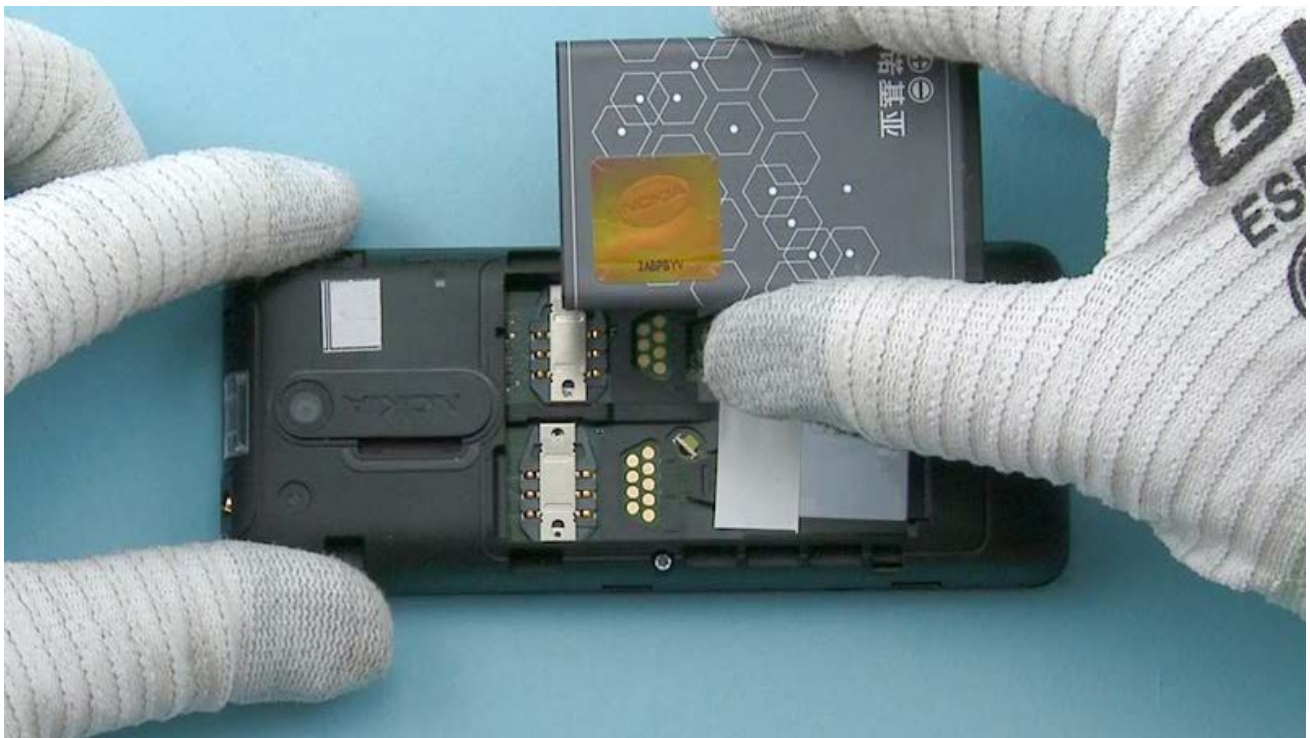
Note that the device used in this disassembly procedure is the dual SIM variant, RM-944. All the disassembly steps are the same for both single and dual SIM variants.



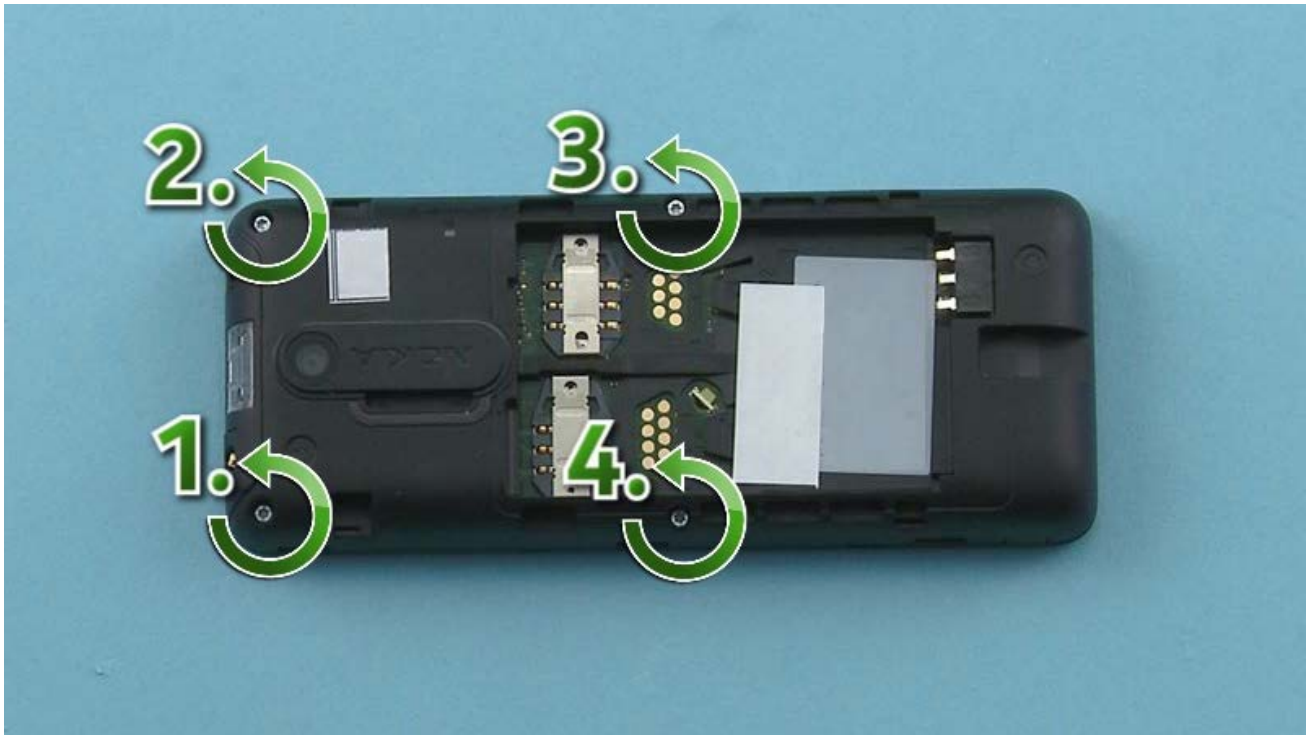
2) Protect the A-COVER window with protective film.



3) To detach the B-COVER press the CAMERA BEZEL and then pull the B-COVER with fingers. Remove the B-COVER.



4) If there is a BATTERY remove it also.



5) Unscrew the four Torx+ size 4 screws in the order shown.



6) To separate the D-COVER and the A-COVER, first release the shown clips on the right side with the SRT-6.



7) Use the SRT-6 to release the clips on the bottom side.



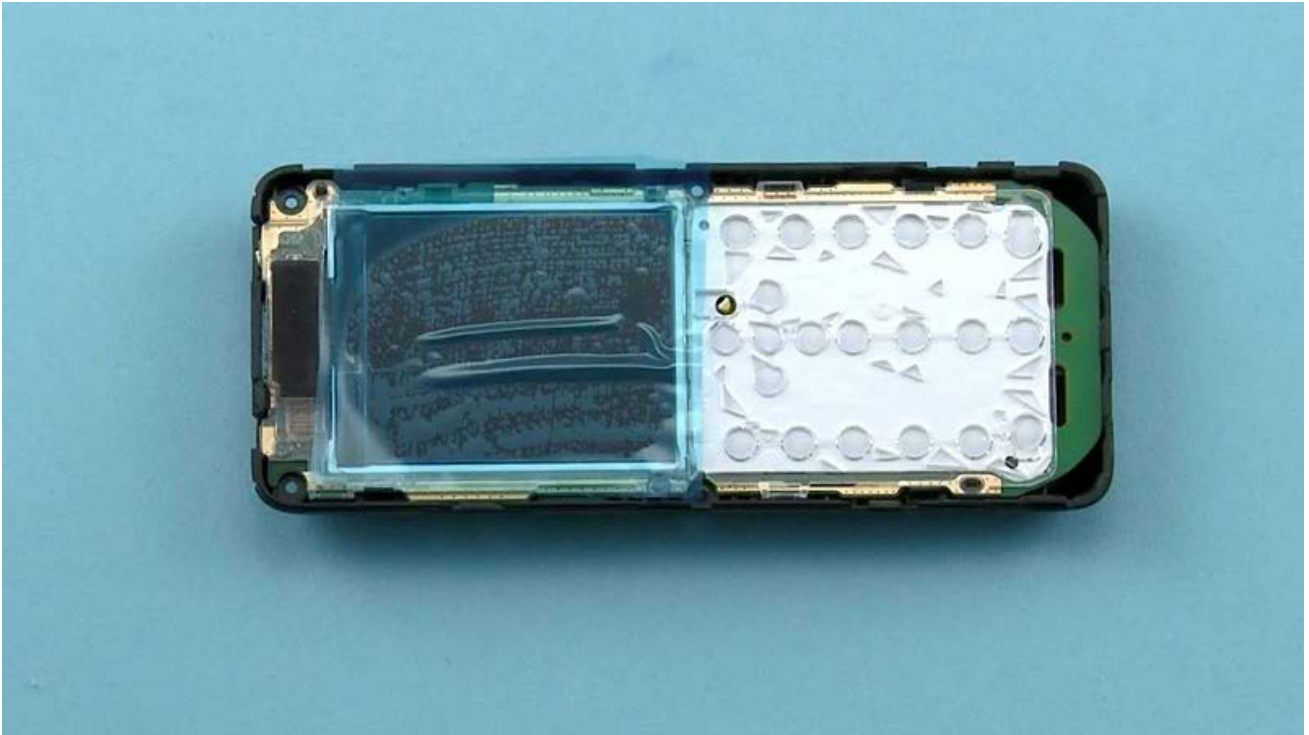
8) Then release the clips from the left side of the device.



9) Lift the bottom end of the A-COVER and release the clips on the top side.



10) The D-COVER and the A-COVER can now be separated.



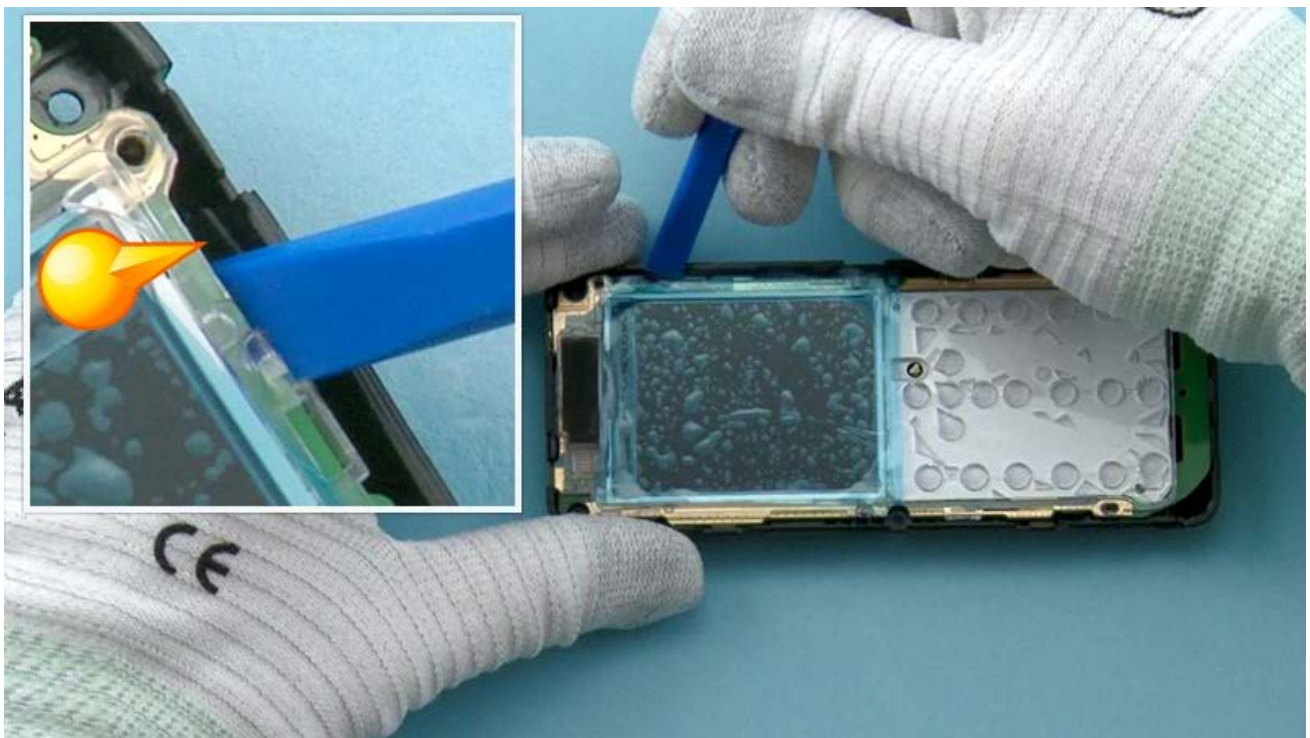
11) Protect the DISPLAY with protective film.



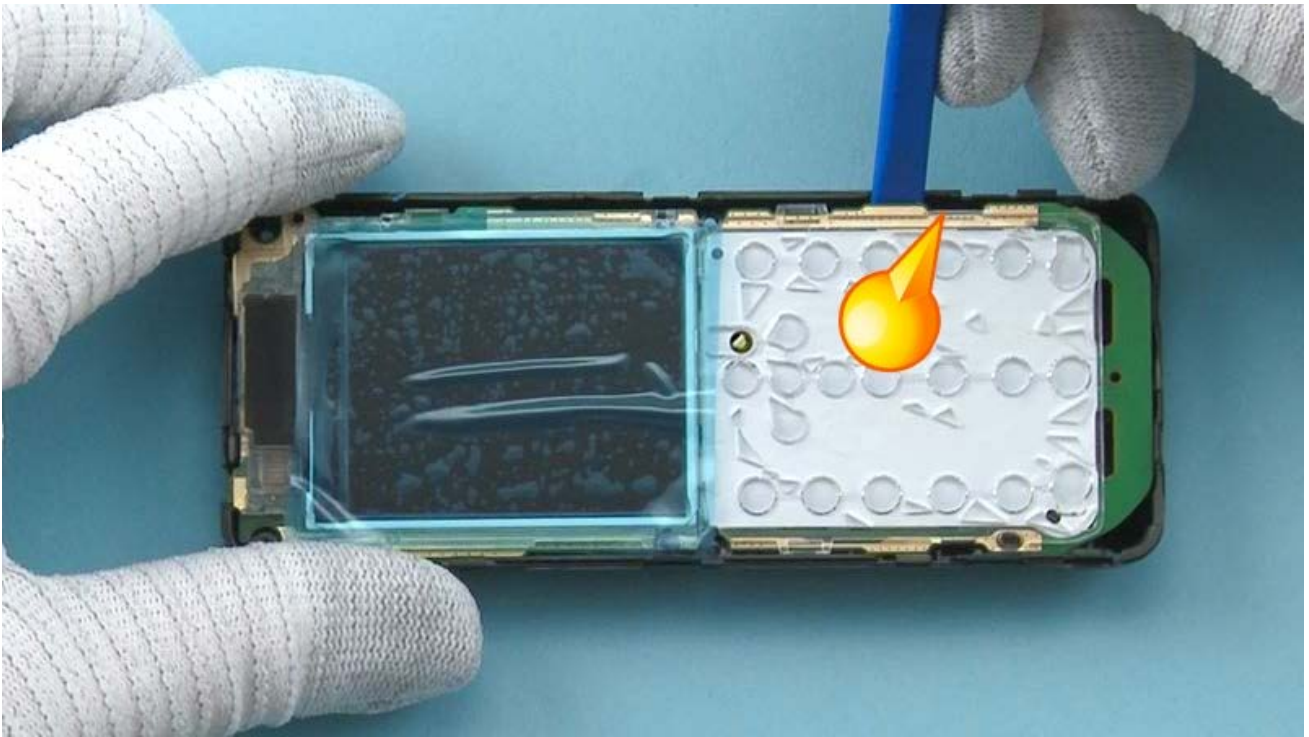
12) Protect the other side of the A-COVER window with protective film.



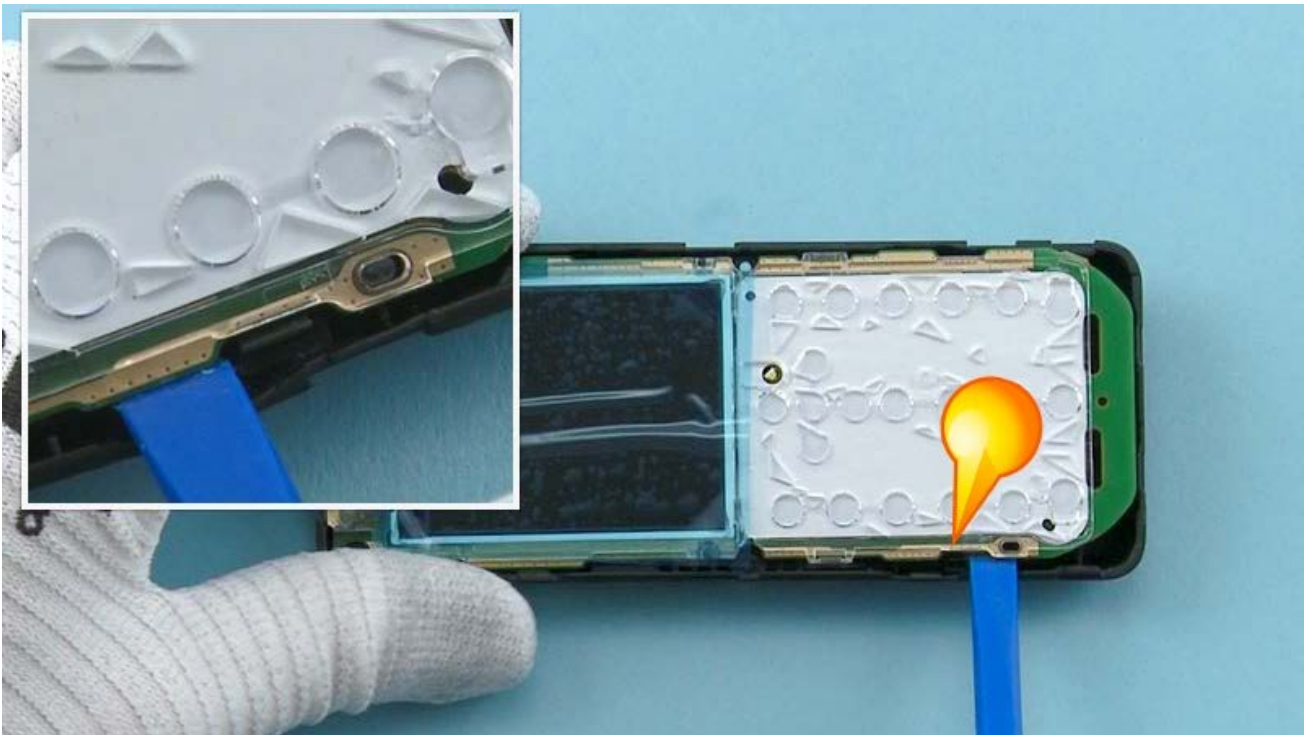
13) Push out the KEYMAT from the A-COVER.



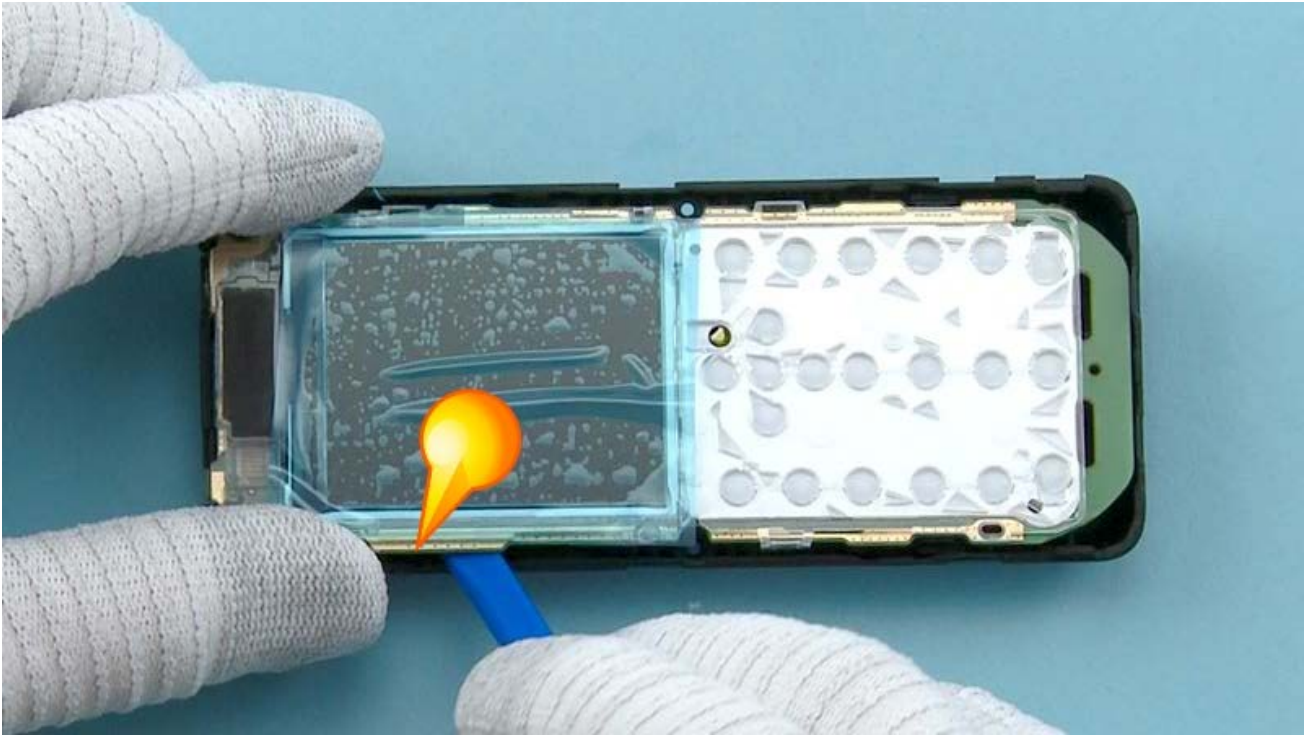
14) To detach the ENGINE BOARD, first release this clip located near the guiding hole with the SS-93.



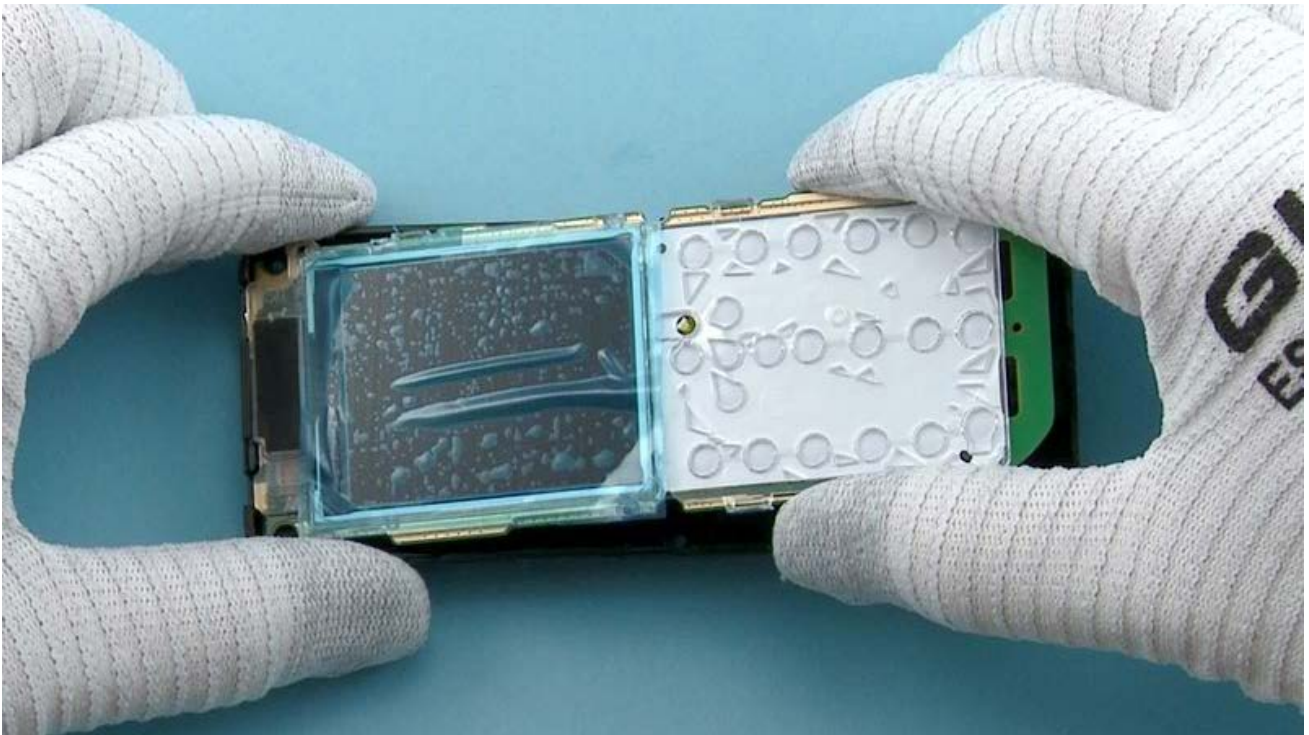
15) Then release the shown clip with the SS-93.



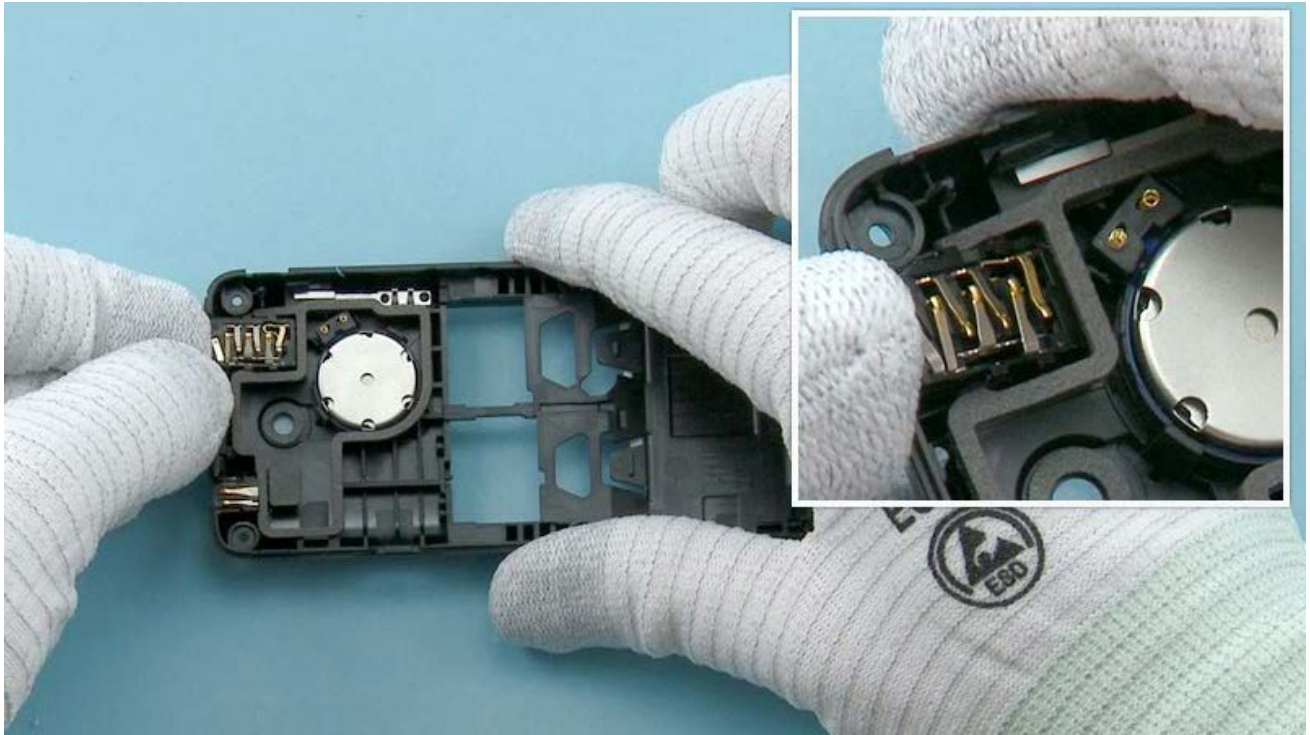
16) Continue by releasing the clip near the guiding hole from the left side of the device.



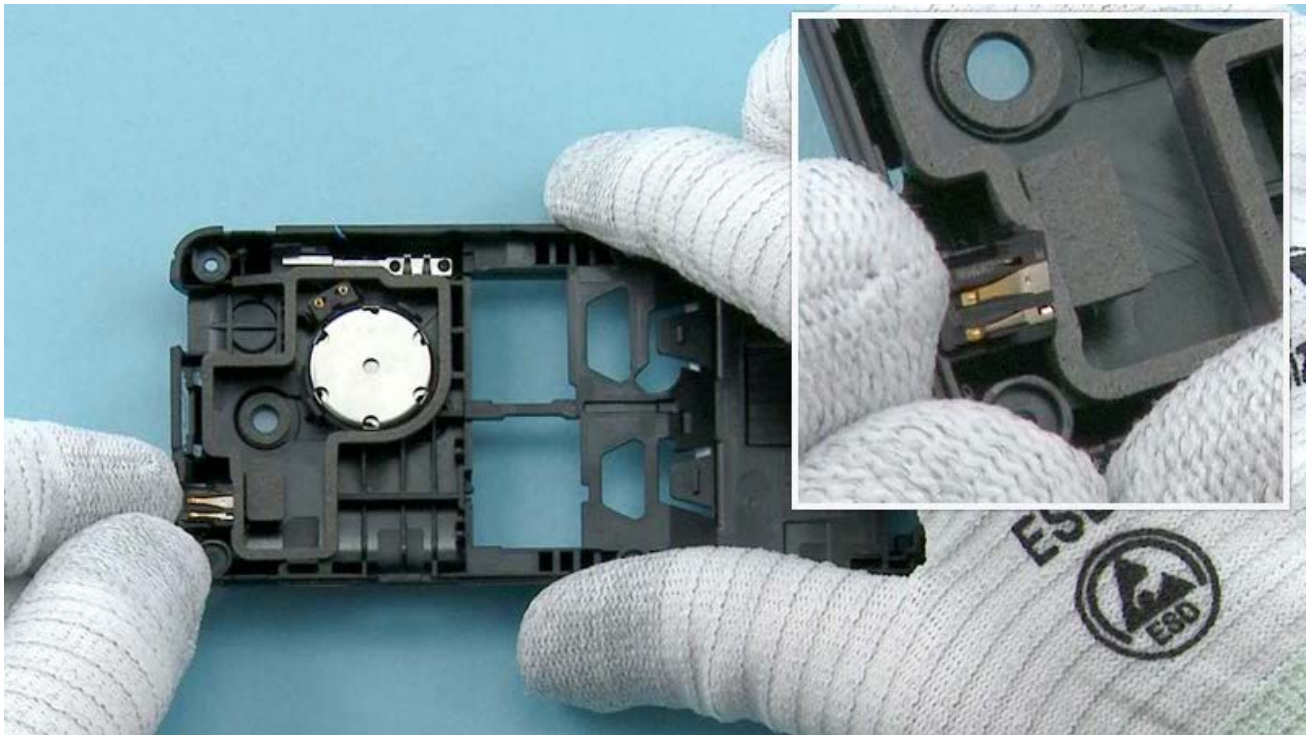
17) Then release the shown clip.



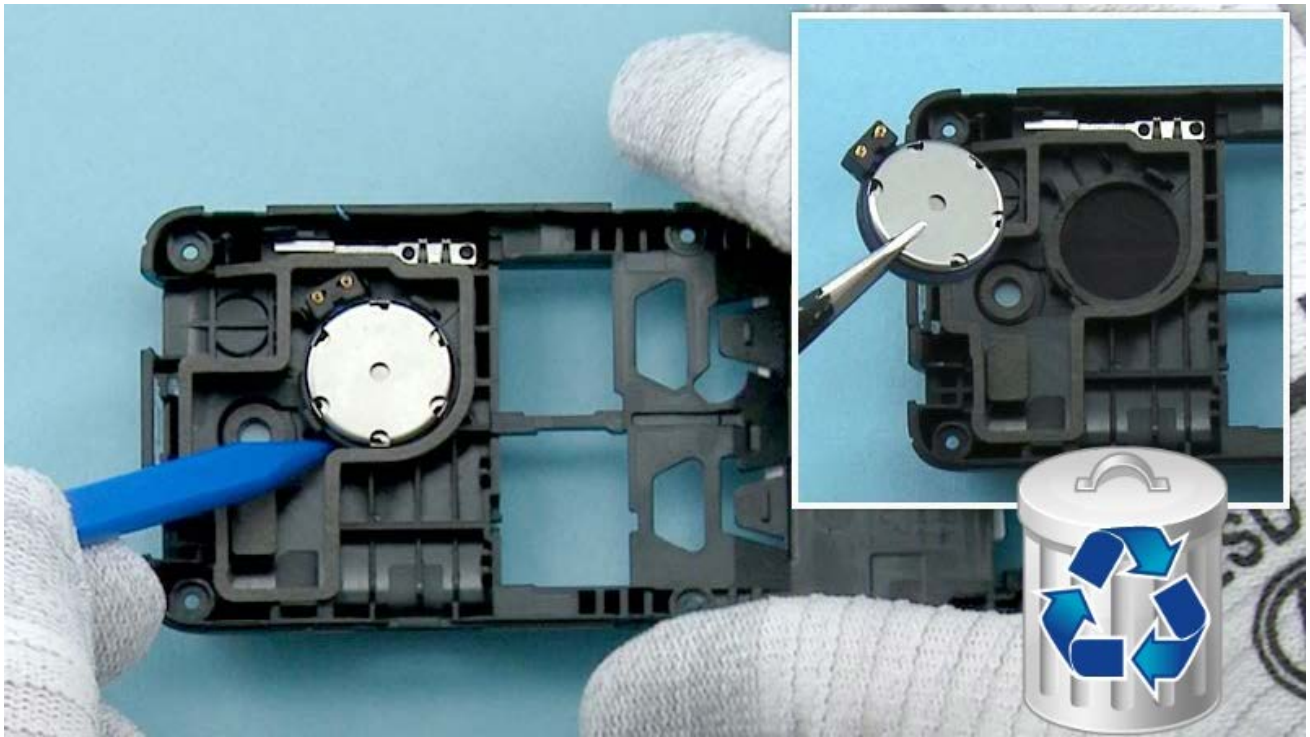
18) To separate the ENGINE BOARD including the UI SHIELDING lift the bottom end first and then remove it.



19) Lift up the HEADSET JACK with fingers.



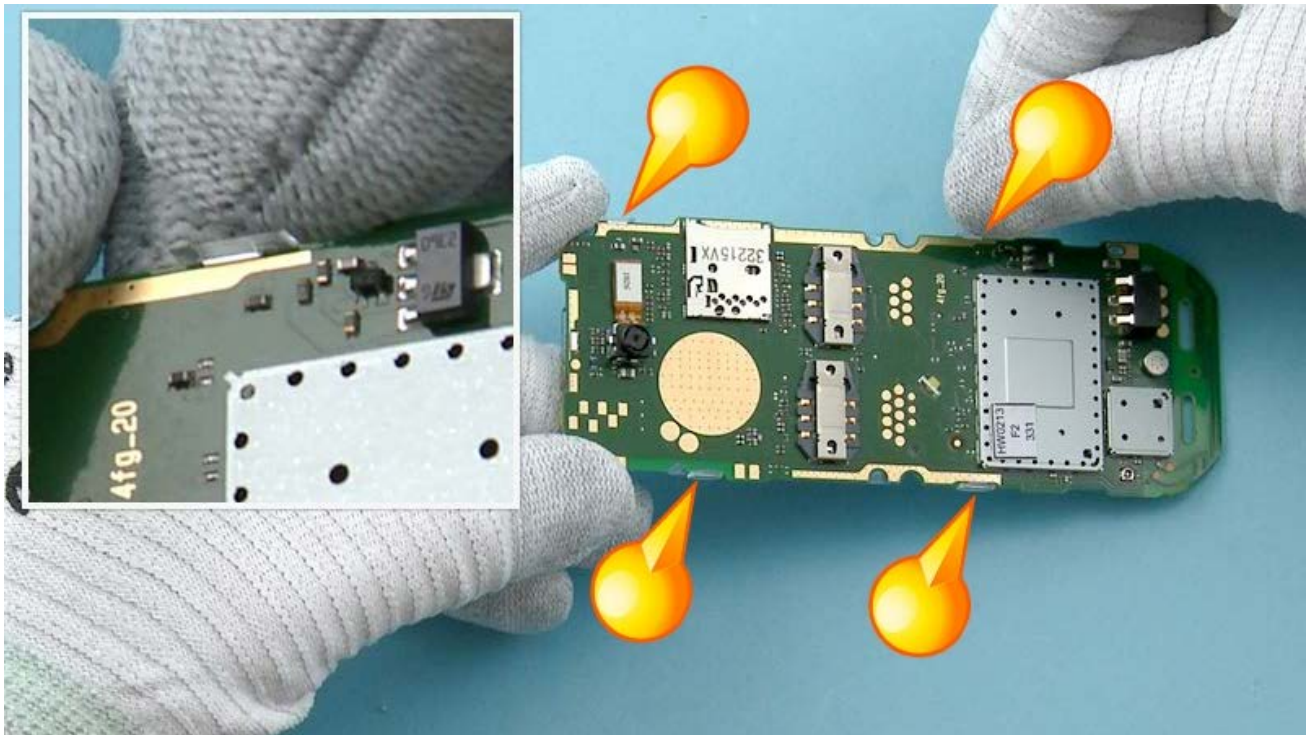
20) Lift up the DC JACK with fingers.



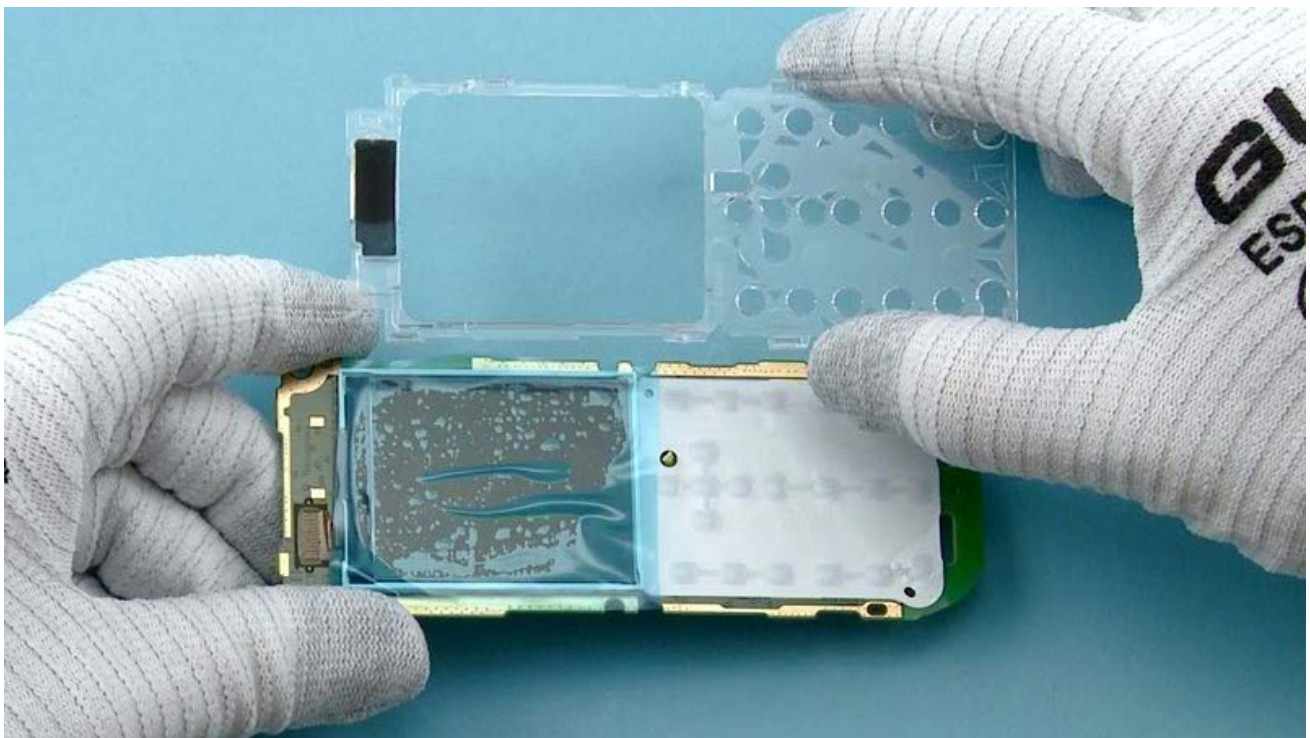
21) Use the sharp end of the SS-93 to release the SPEAKER. Use tweezers to remove the SPEAKER. Do not use it again. Discard it.



22) Use the sharp end of the SS-93 to remove the SPEAKER GASKET. Do not use it again. Discard it.



23) Release the clips holding the UI SHIELDING on the ENGINE BOARD.



24) Remove the UI SHIELDING.

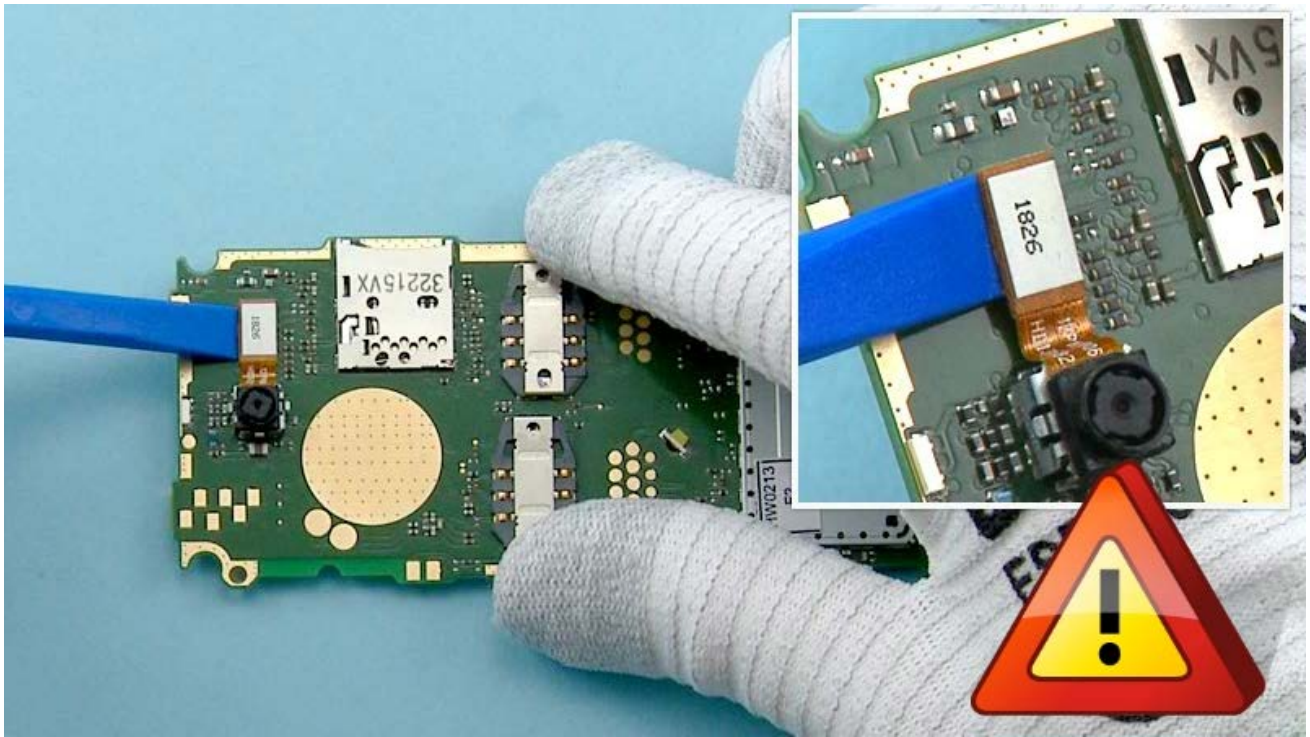


25) Use the dental tool to release the EARPIECE.

Be careful not to injure yourself with the sharp end of the dental tool.

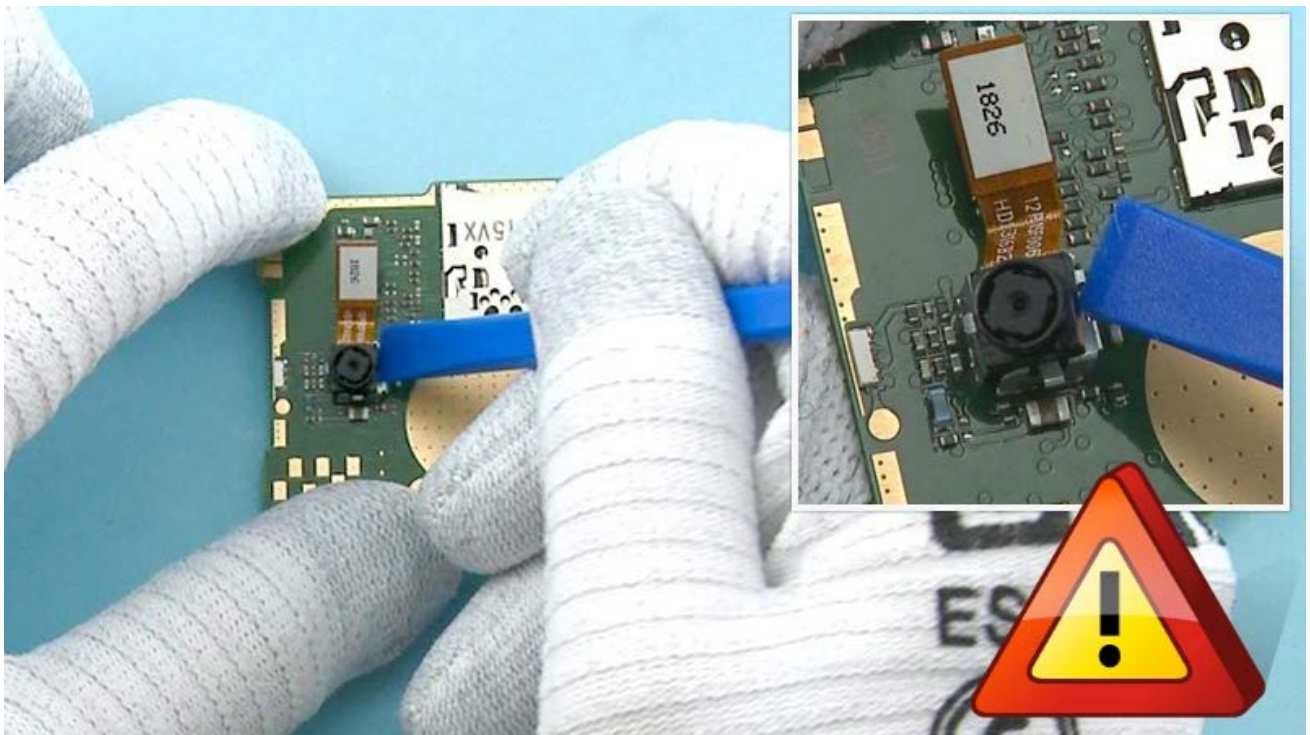


26) Remove the EARPIECE and the EARPIECE ADHESIVE with tweezers. Do not use them again. Discard them.

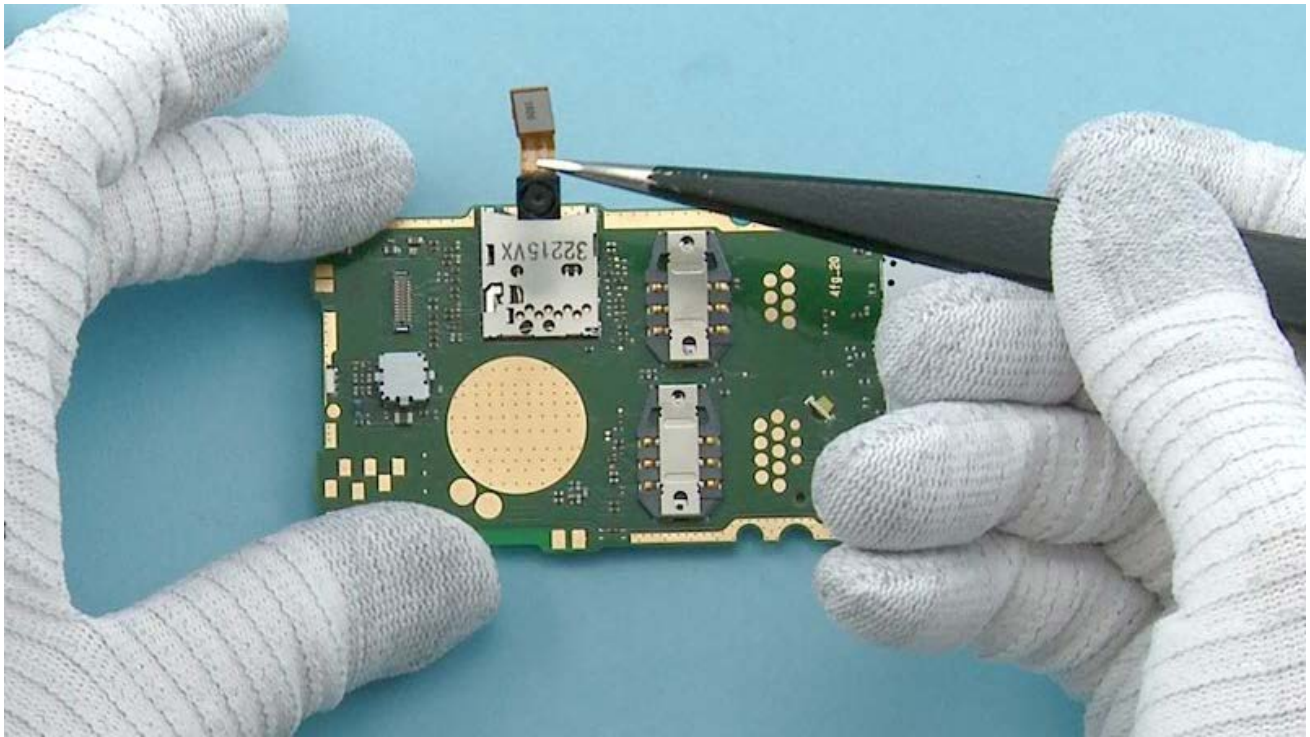


27) Open the CAMERA connector with the SS-93.

Be careful not to damage the connector or any components nearby.



28) Use the SS-93 to carefully loosen the adhesive holding the CAMERA.



29) Remove the CAMERA with tweezers.

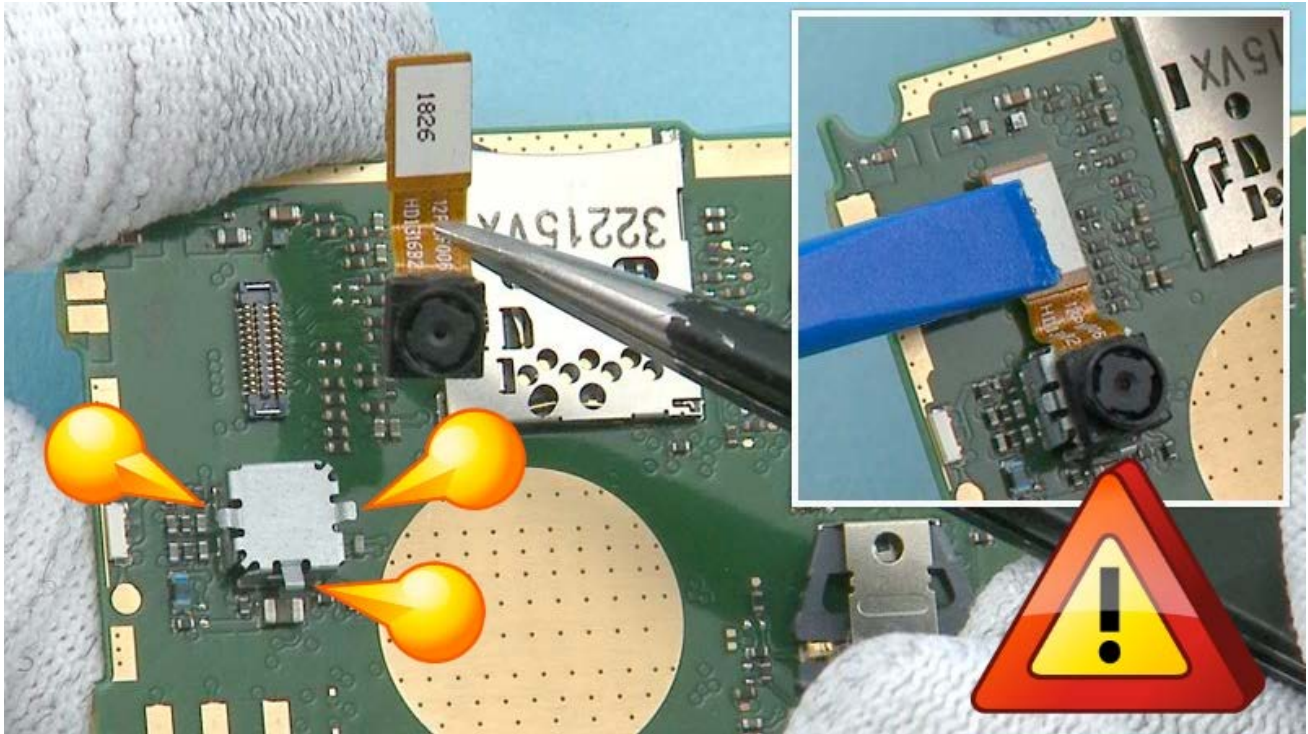


30) Use the SS-93 to release one corner of the DOMESHEET. Peel off the DOMESHEET with fingers. Do not use it again. Discard it.



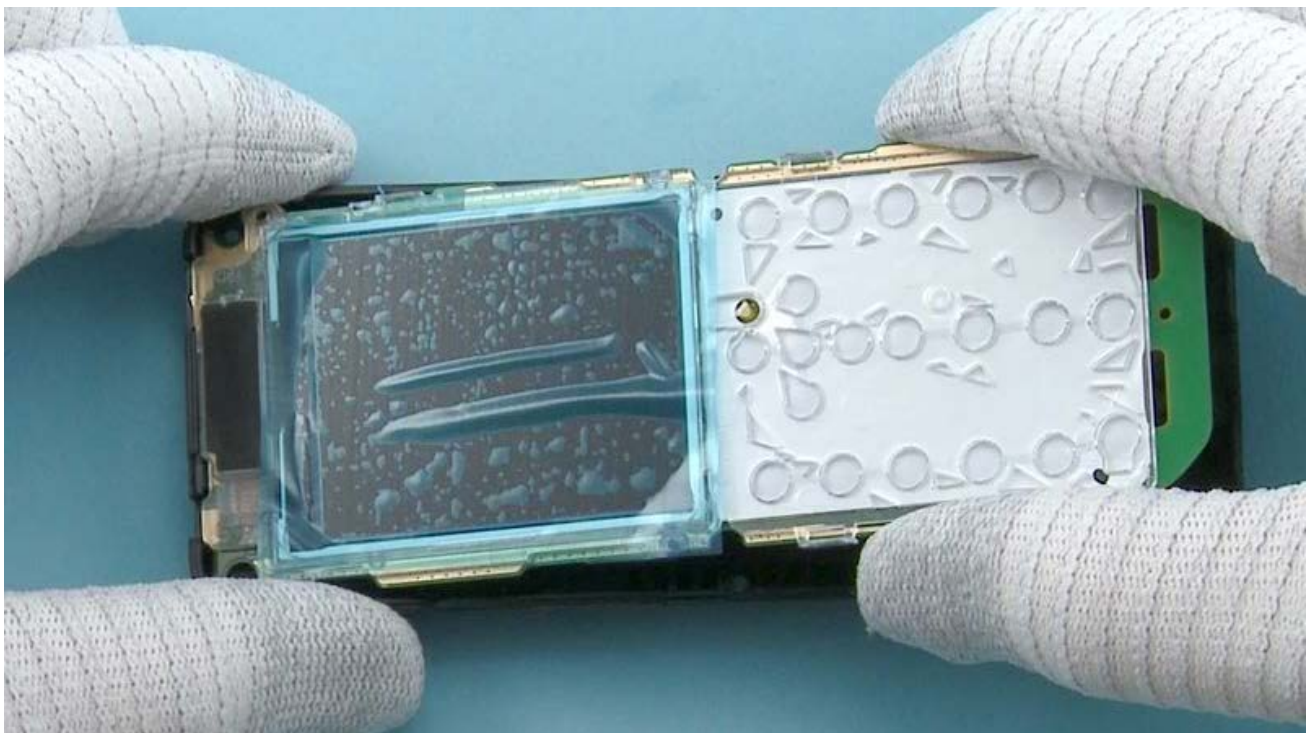
31) The Nokia 108, Nokia 108 Dual SIM disassembly procedure is complete.

-END OF DISASSEMBLY-



1) Align the CAMERA with tweezers. Use the shown clips as references. Close the CAMERA connector with the SS-93.

Be careful not to damage the connector or any components nearby.



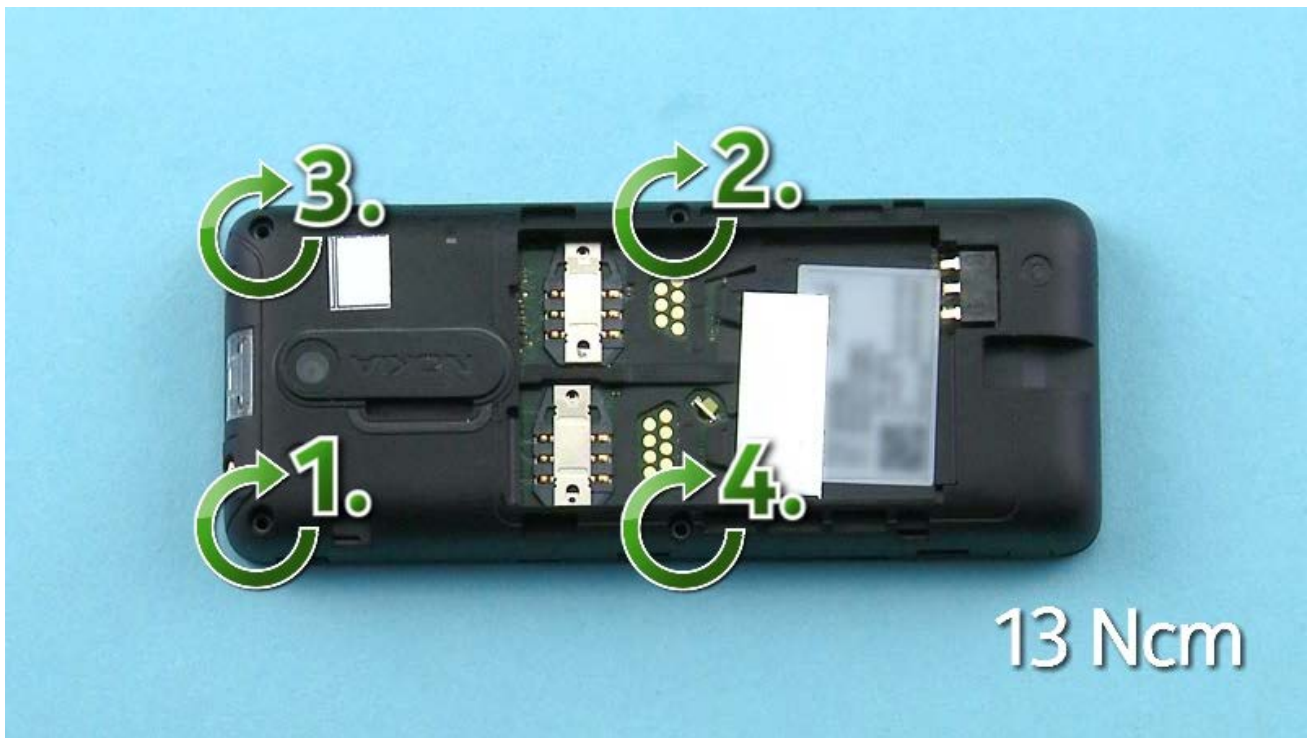
2) First place the top end of the ENGINE BOARD including the UI SHIELDING into the D-COVER. Then lower down the bottom end.



3) While attaching the ENGINE BOARD including the UI SHIELDING make sure you do not press the DISPLAY.



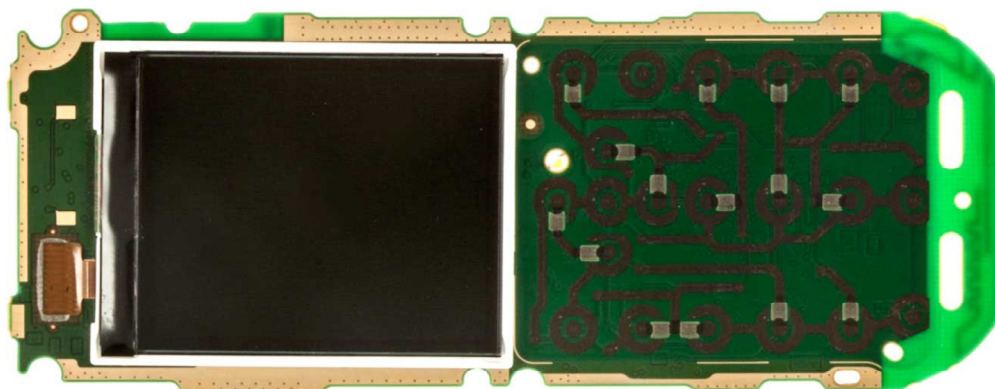
4) Attach the top end of the A-COVER first. Then put down the bottom end and make sure all the clips are secured.



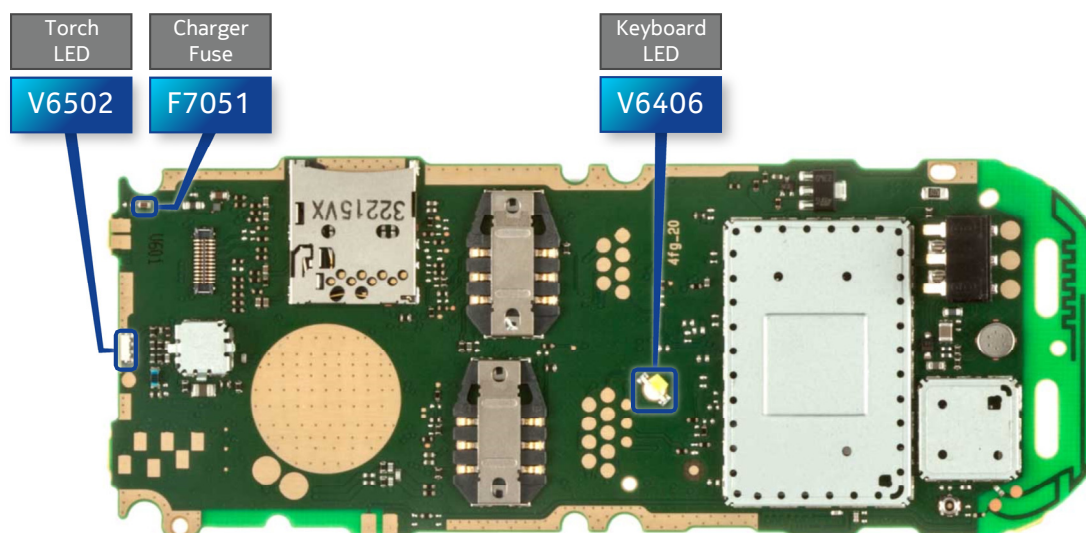
5) Fasten the four Torx+ size 4 screws in the order shown to the torque of 13 Ncm.

-END OF ASSEMBLY HINTS-

TOP



BOTTOM





CA-101 Service cable



AC-11 Travel charger



SF-320 Flash adapter



Nokia Standard Toolkit (v2)

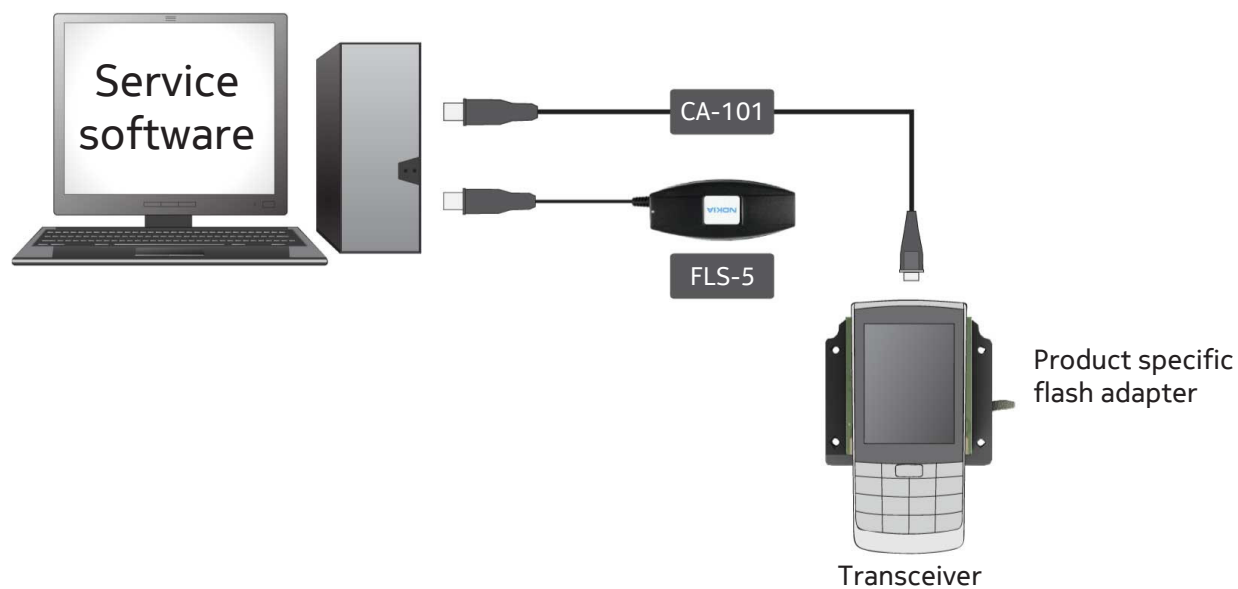
For more information, refer to the Service Bulletin (SB-011) on Nokia Online. Supplier or manufacturer contacts for tool re-order can be found in "Recommended service equipment" document on Nokia Online.



- 1 — Charger connector
- 2 — Flashlight
- 3 — 3.5 mm AHJ connector
- 4 — Earpiece
- 5 — Display
- 6 — Left selection key
- 7 — Call key
- 8 — Scroll key
- 9 — Right selection key
- 10 — End/Power key
- 11 — Keypad
- 12 — Microphone



Flashing concept



Version	Date	Description
1.0	24.09.2013	First published version