

Nokia 220

RM-969 (DS), RM-970 (SS), RM-971 (SS)

Key features

- 2,4" QVGA display with 320 x 240 resolution
- MicroSD card support up to 32 GB
- Nokia Slam support
- 2 MP camera
- Micro USB for charging and file transfer

Version 1.0

Send feedback

- Recommend Change in KICS
- Rate this page in KICS
- E-mail
careacademy@nokia.com



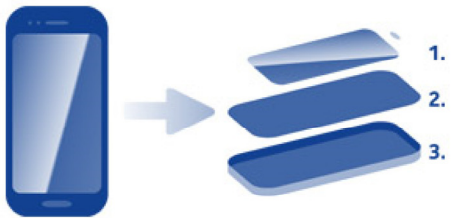
CHECK THE REPAIR POLICY BEFORE PERFORMING ANY MECHANICAL REPAIR ON SERVICE LEVEL 1&2!

Exploded view



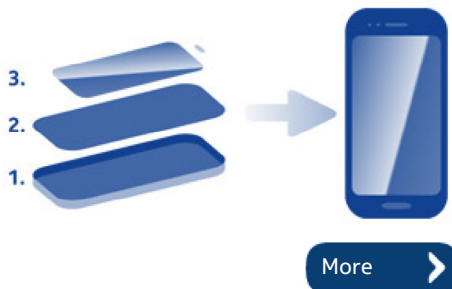
More >

Disassembly steps



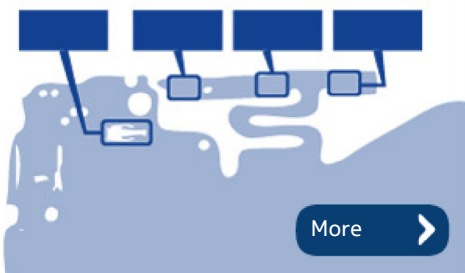
More >

Assembly steps



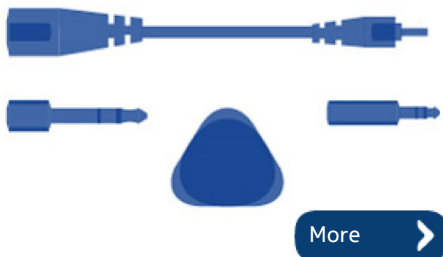
More >

Solder components



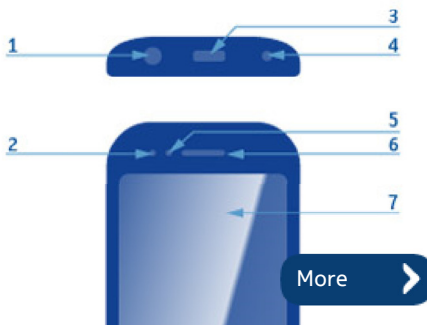
More >

Service devices



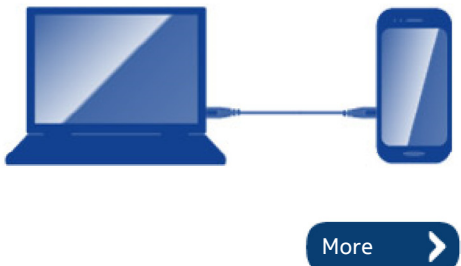
More >

Product controls and interfaces



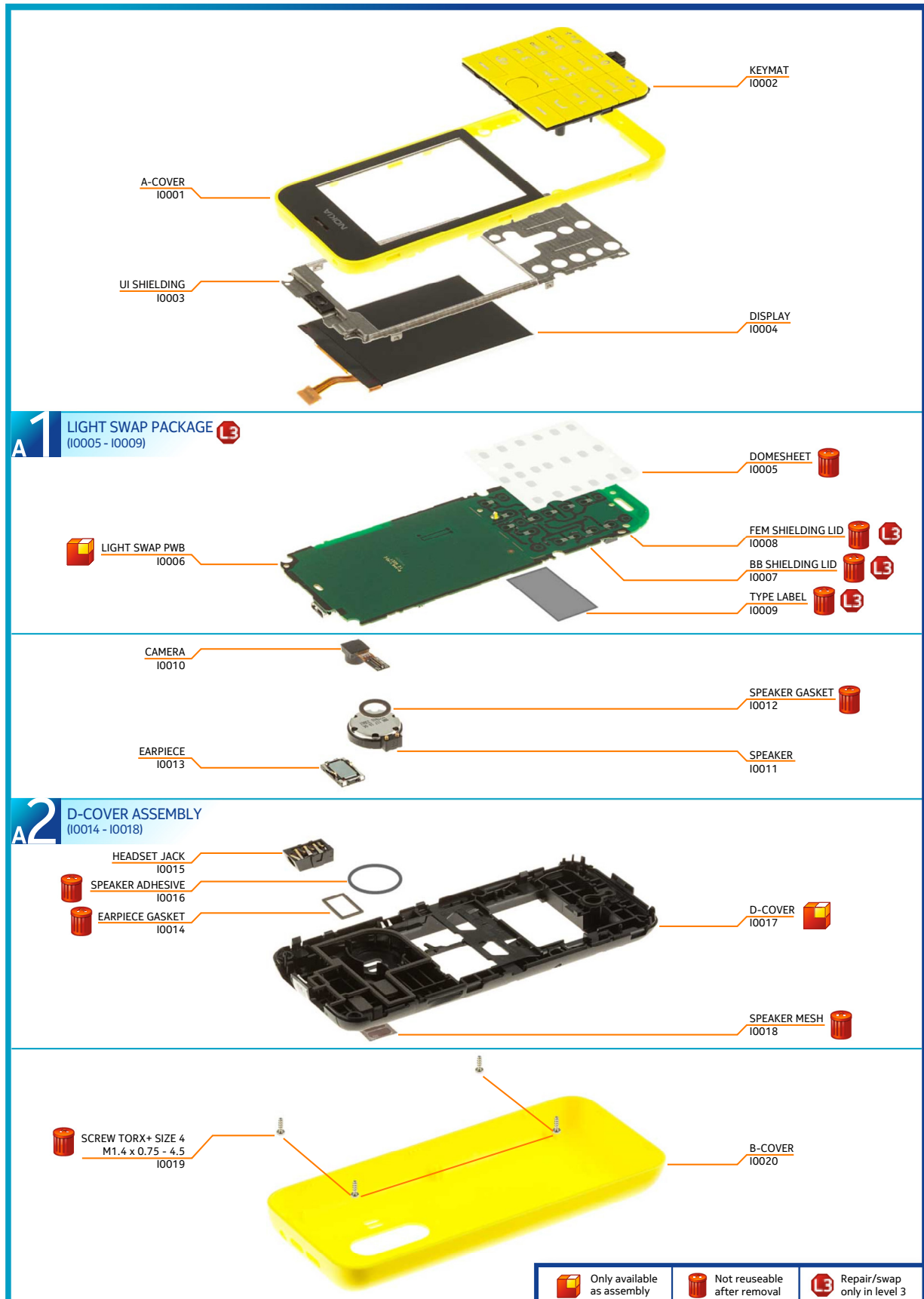
More >

Service concept



More >

Version	Date	Description
1.0	21.02.2014	First published version





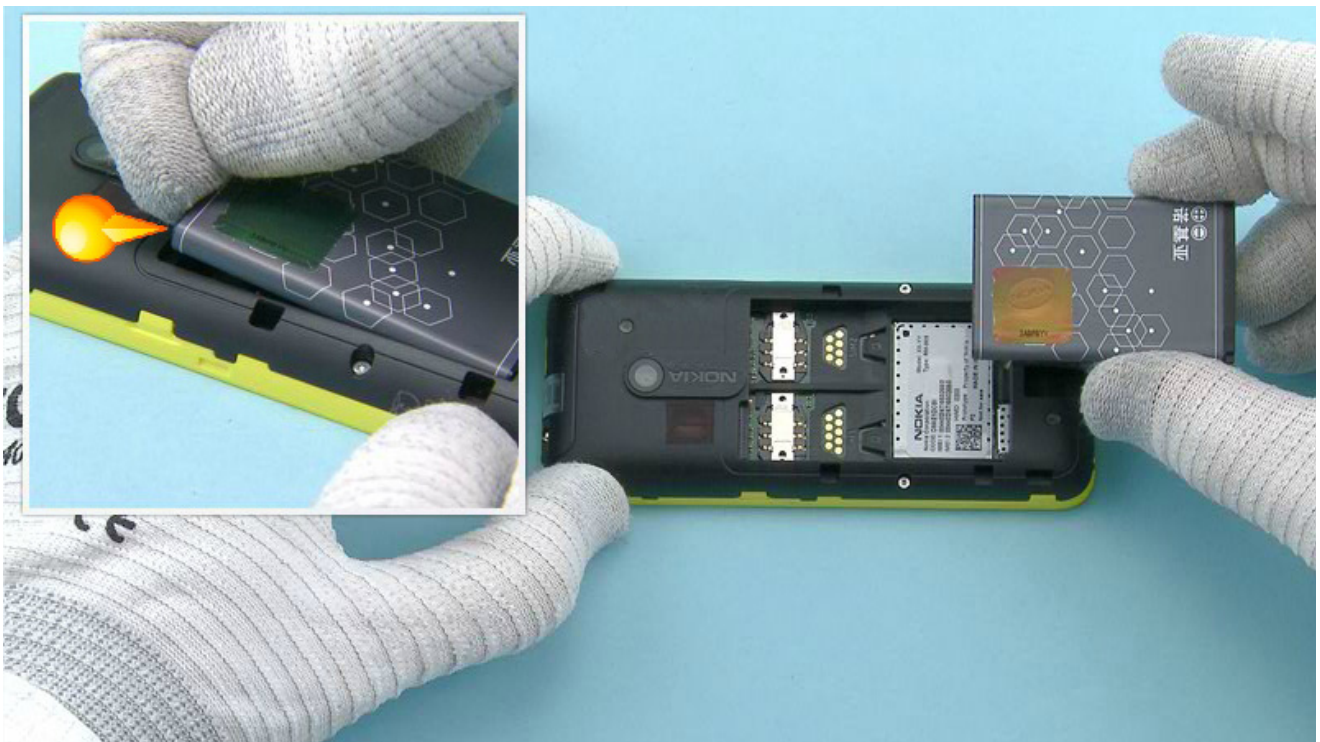
1) For disassembling you need the Nokia Standard toolkit version 2 and an AV plug.



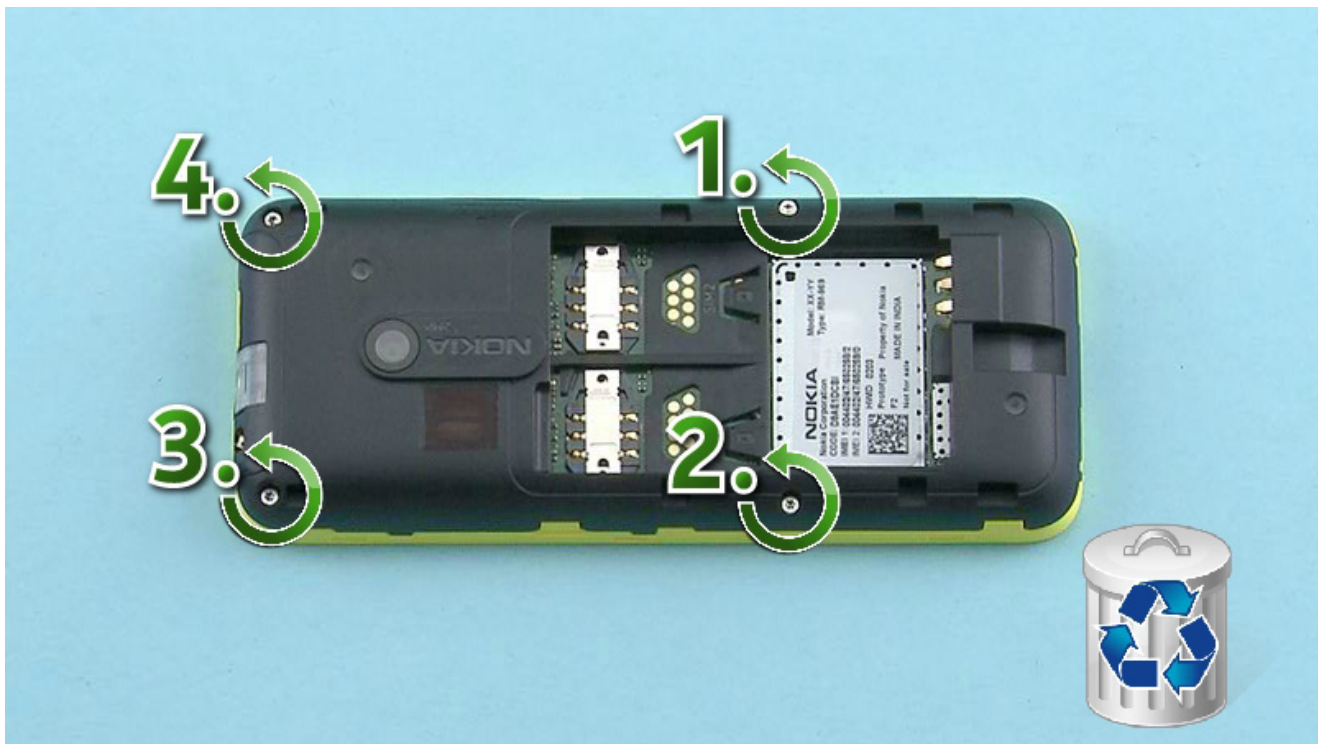
2) Protect the A-COVER with protective film.



3) Push from the camera opening to release the B-COVER. Remove the B-COVER.



4) If there is battery inserted, remove it by using the shown opening. Lift up and remove the BATTERY.



5) Unscrew the four Torx+ size 4 screws in the order shown. Do not use them again. Discard them.



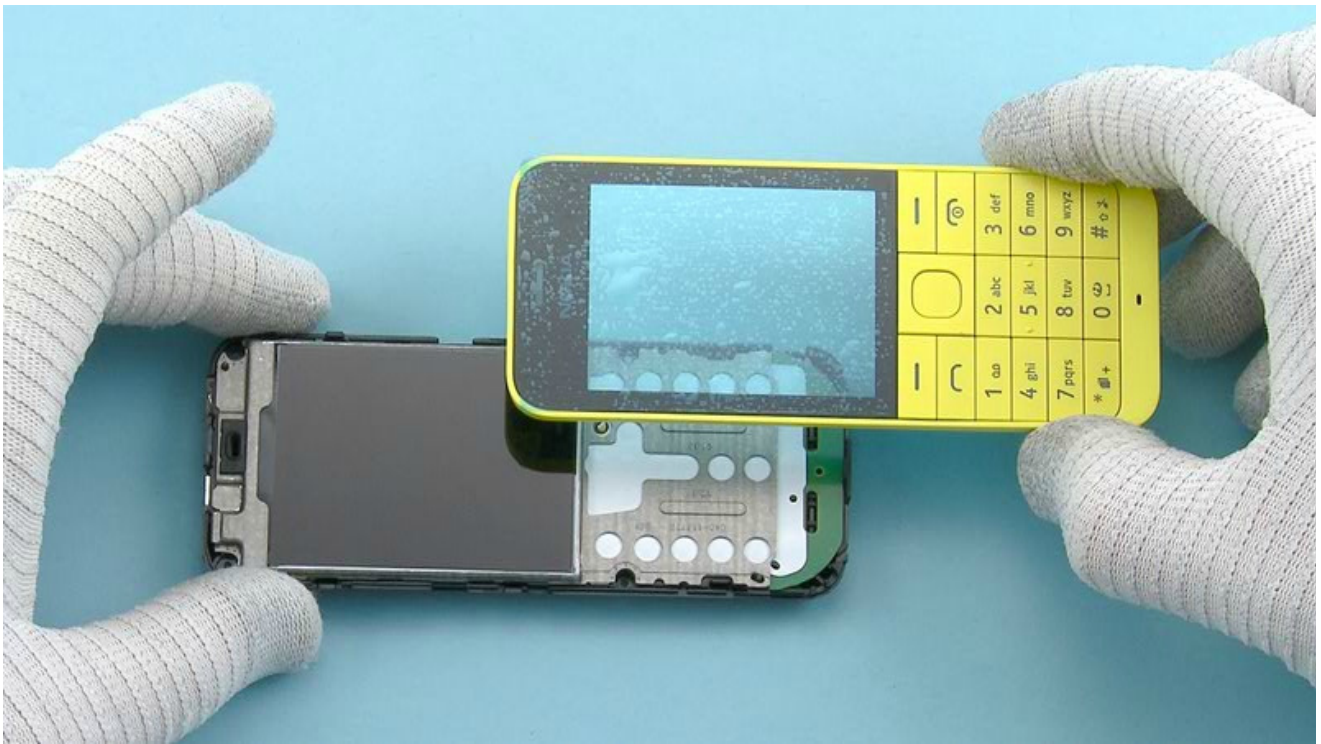
6) To release the A-COVER open the shown clips with the SRT-6. Start from the top end of the device.



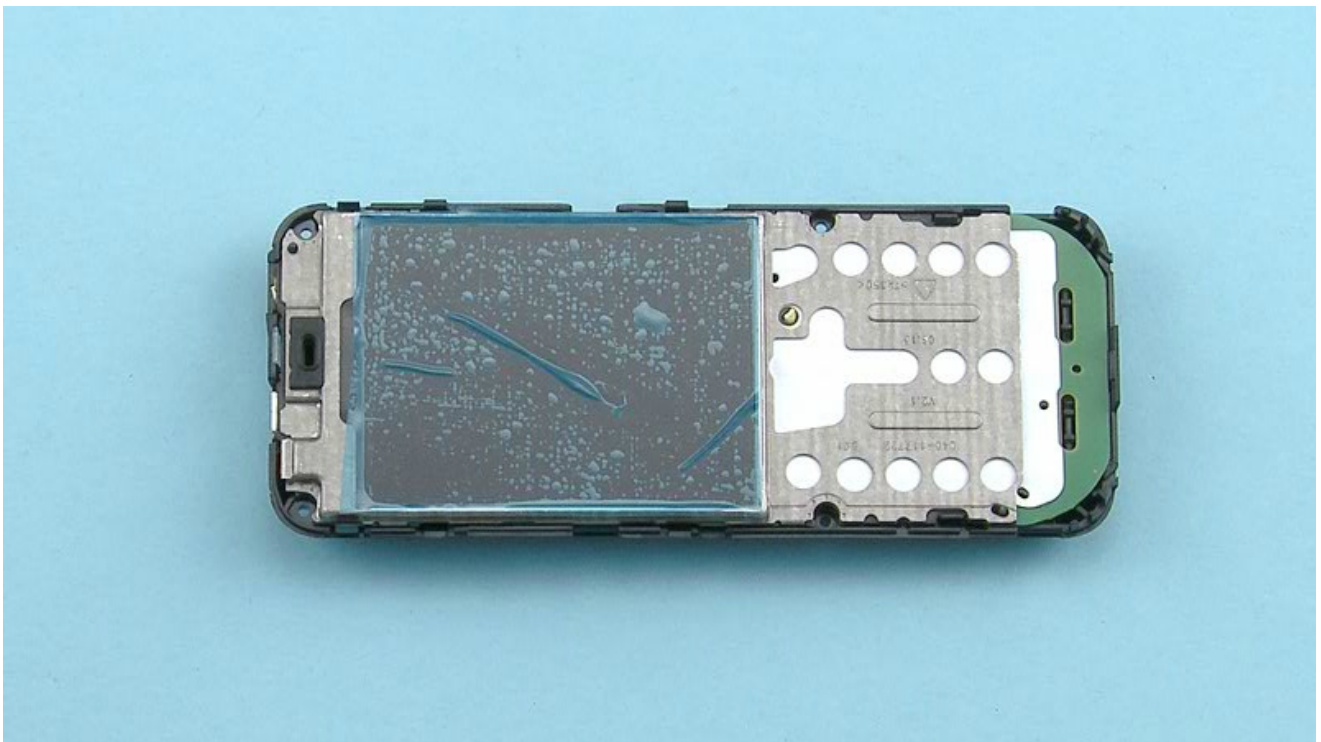
7) Open the clip on the bottom end of the device with the SRT-6.



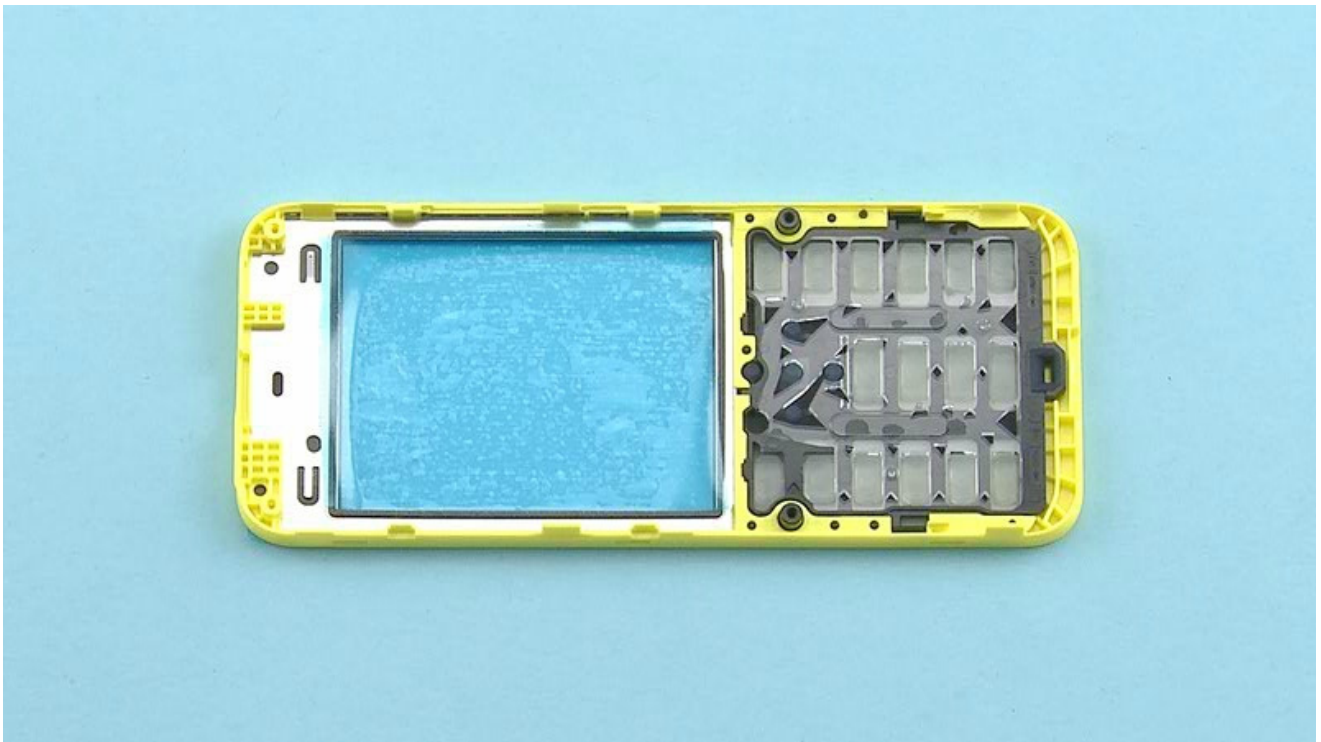
8) Open also the clips on the other side with the SRT-6.



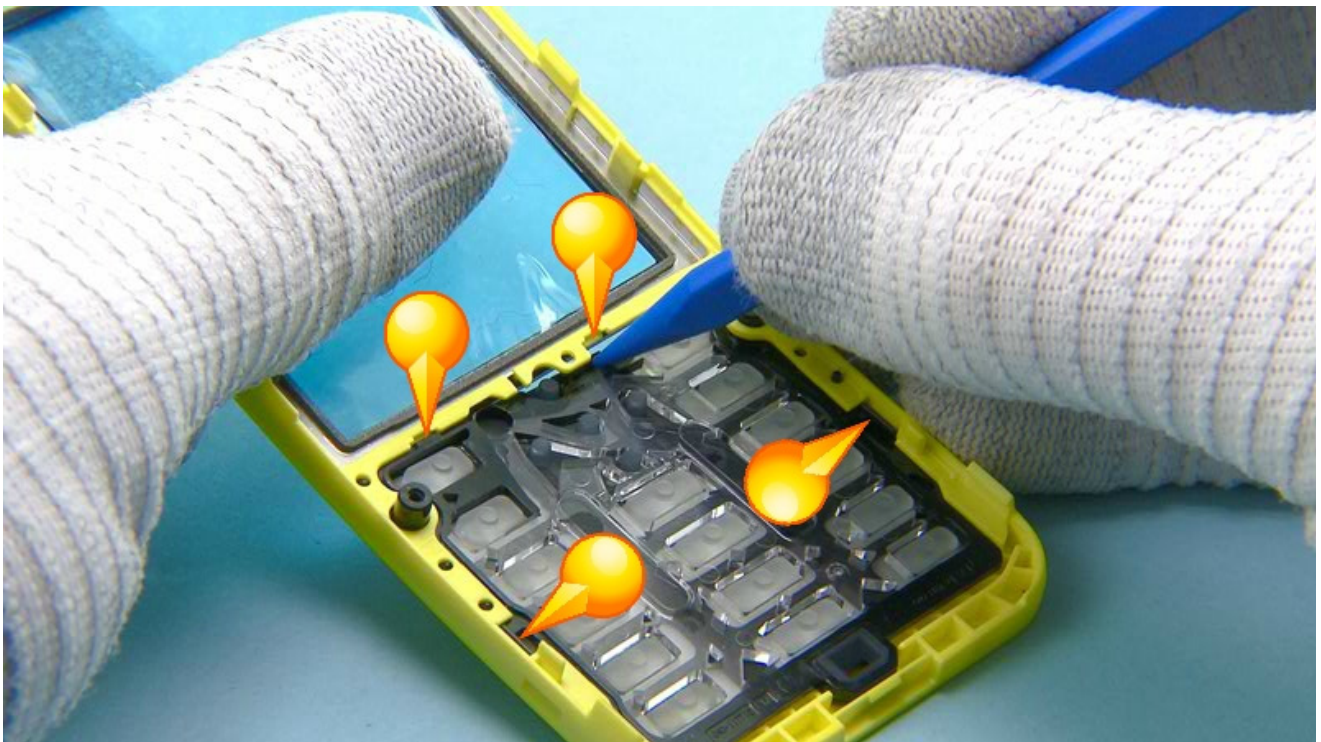
9) The A-COVER can now be separated.



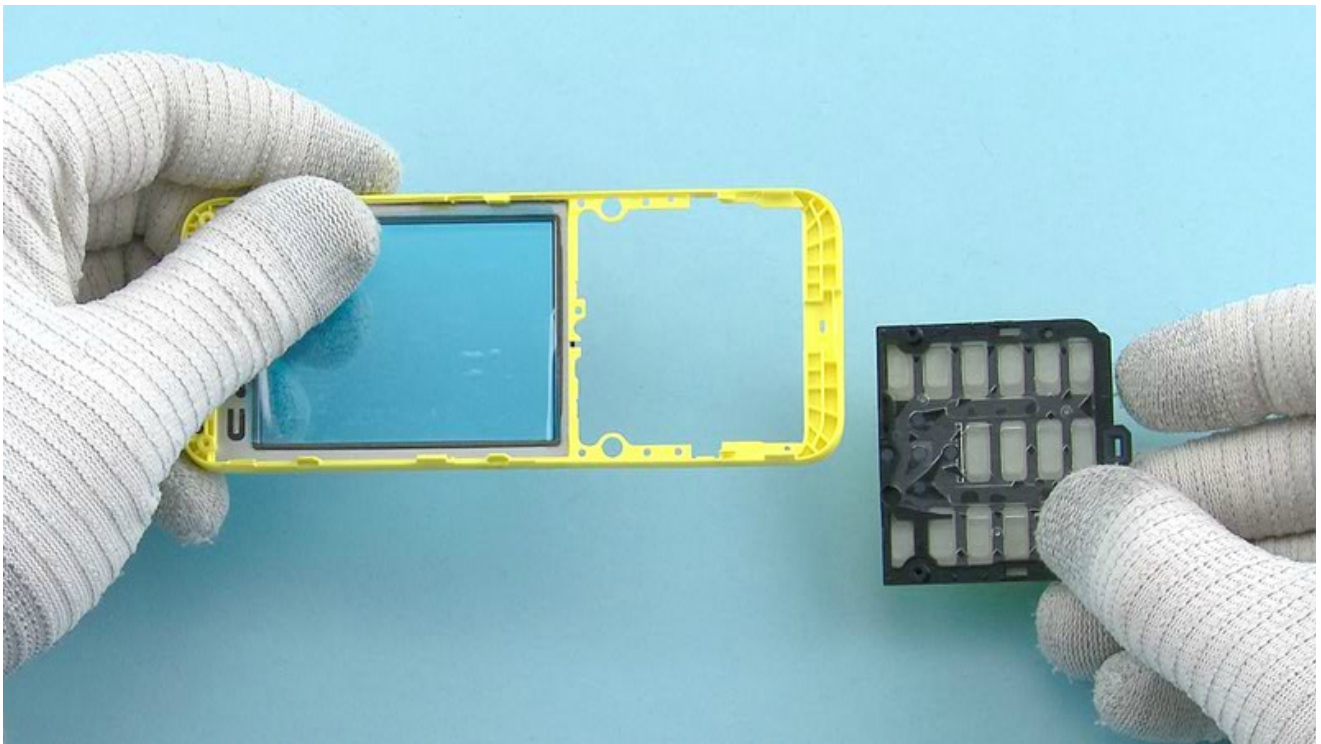
10) Protect the DISPLAY with protective film.



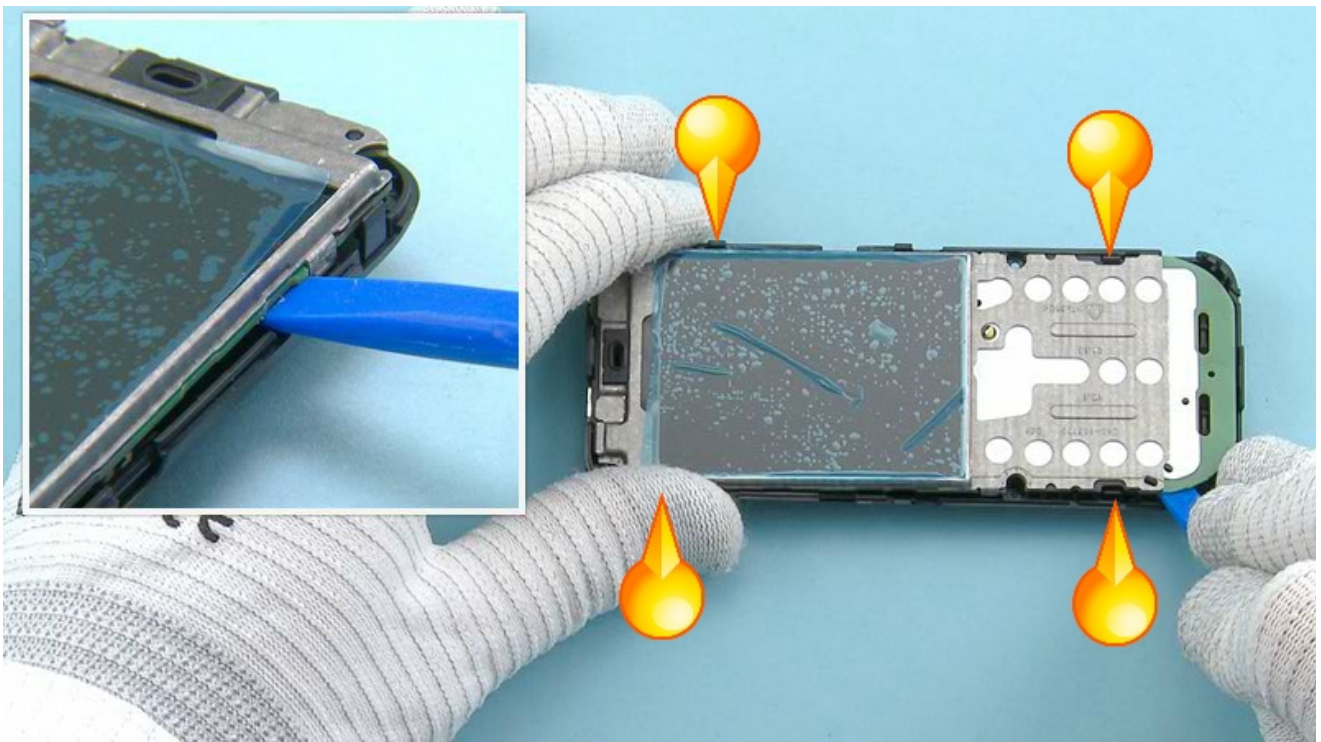
11) Protect the other side of the A-COVER with protective film.



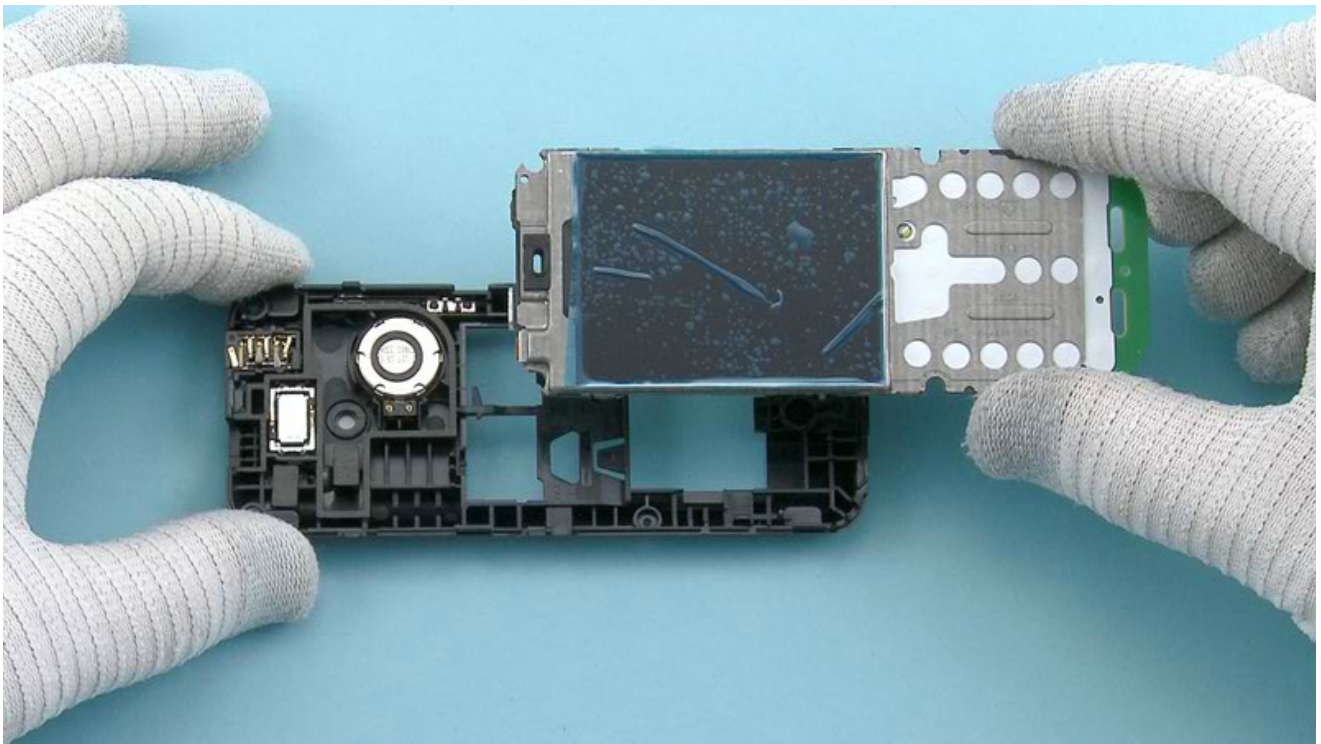
12) Use the sharp end of the SS-93 to release the shown clips holding the KEYMAT. Open the two clips near the A-COVER window first.



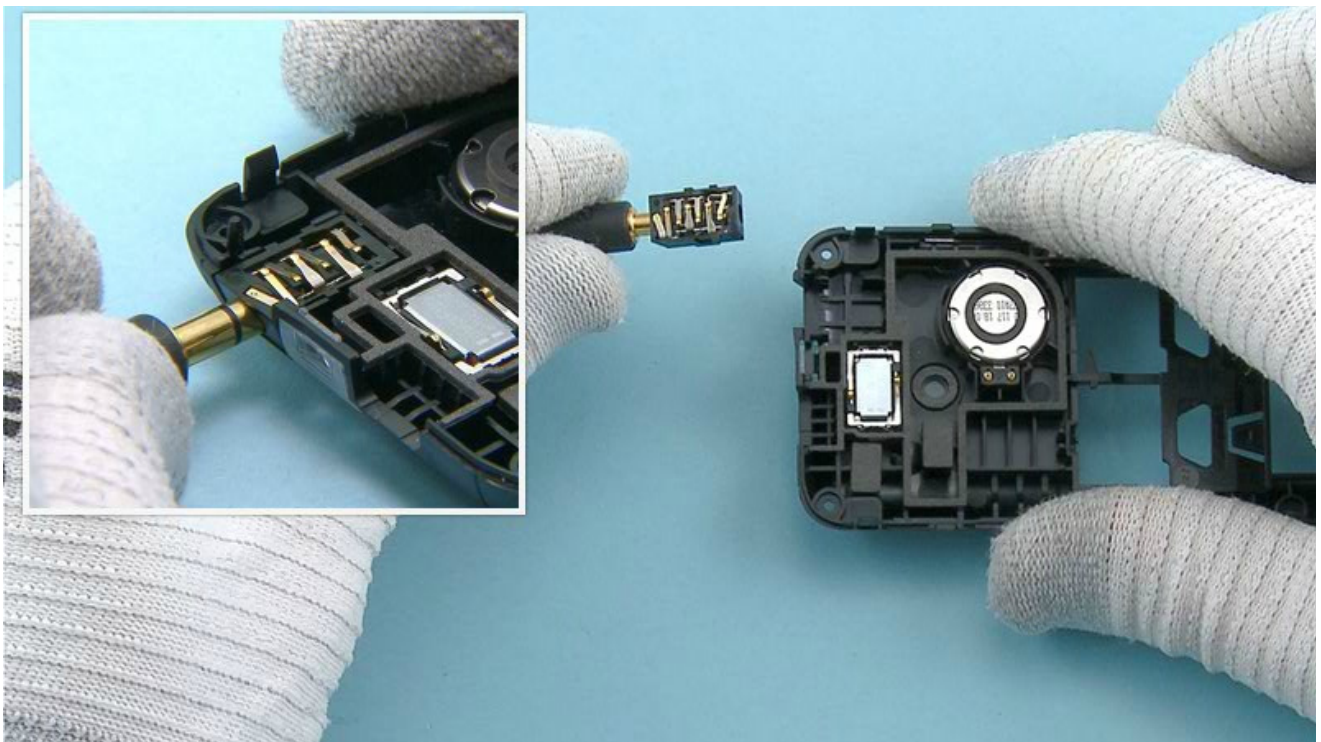
13) The KEYMAT can now be separated.



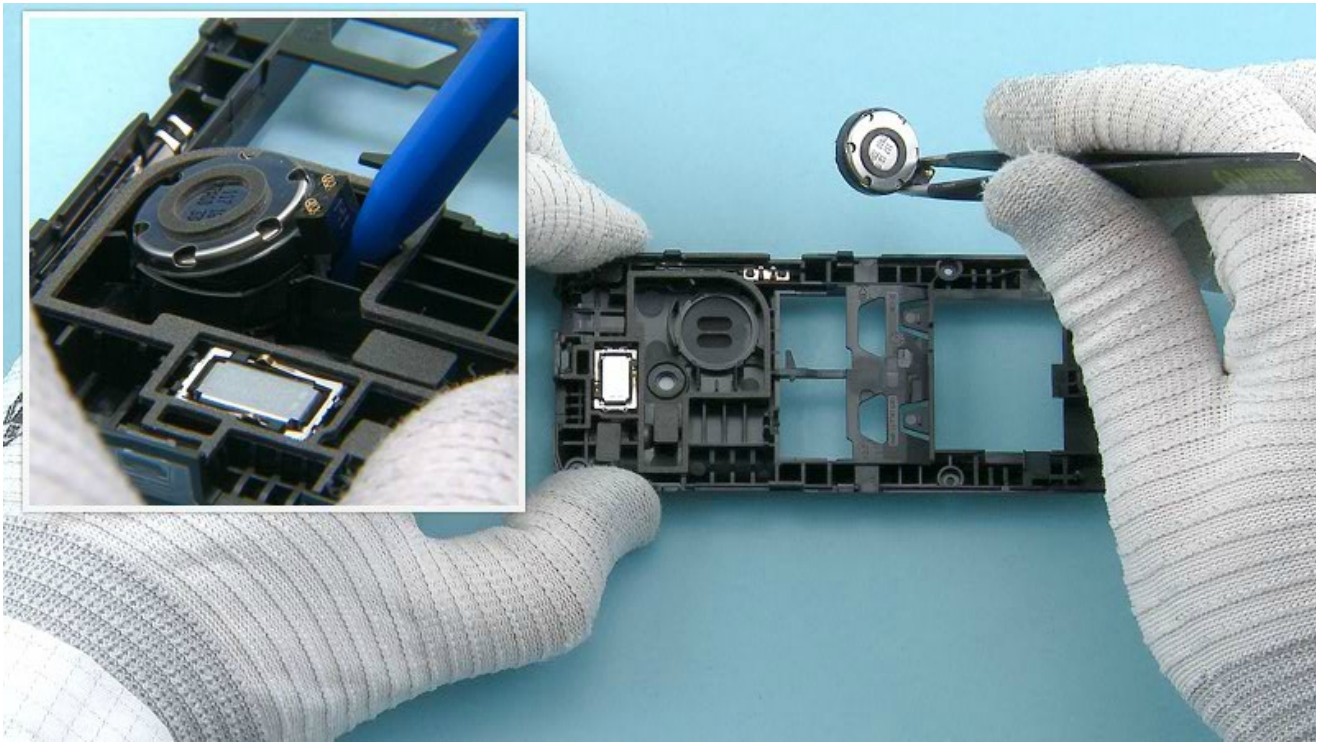
14) Use the SS-93 to open the four clips holding the ENGINE BOARD.



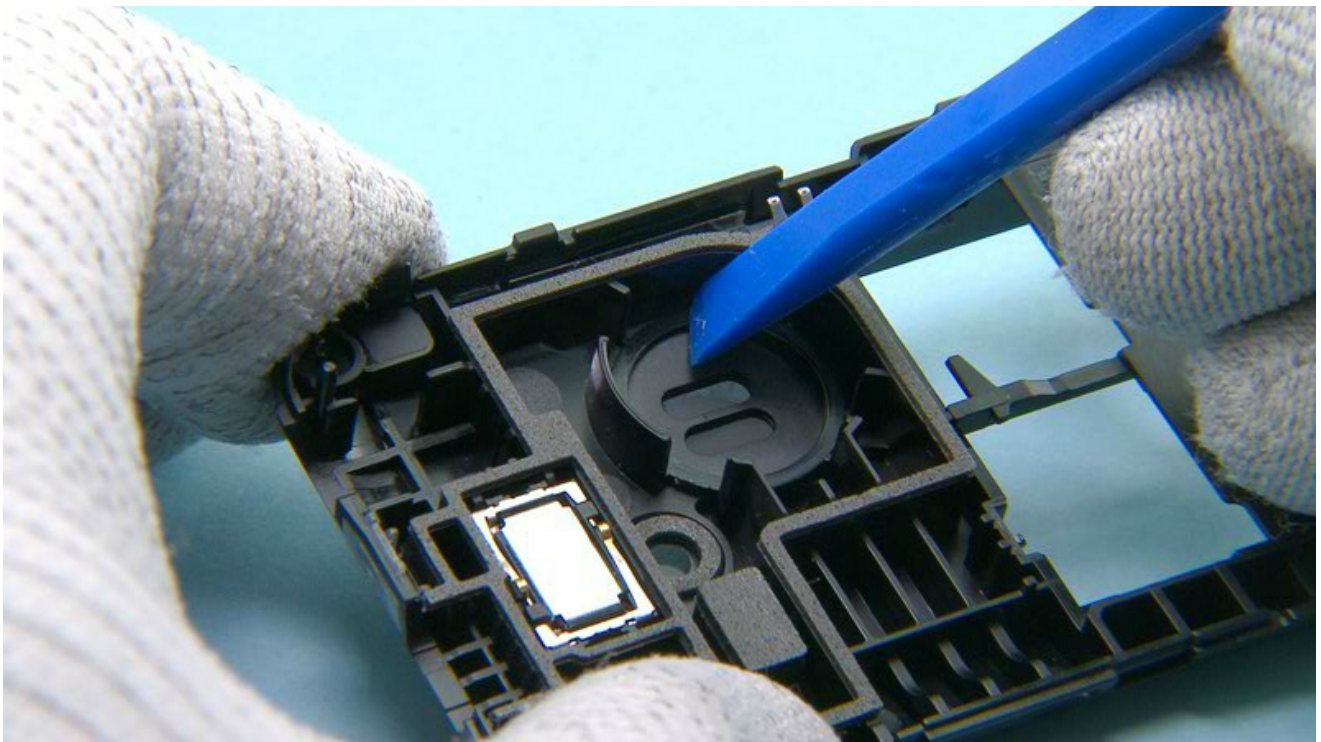
15) The ENGINE BOARD can now be separated.



16) Use an AV plug to release the HEADSET JACK.



17) Lever out and remove the SPEAKER.



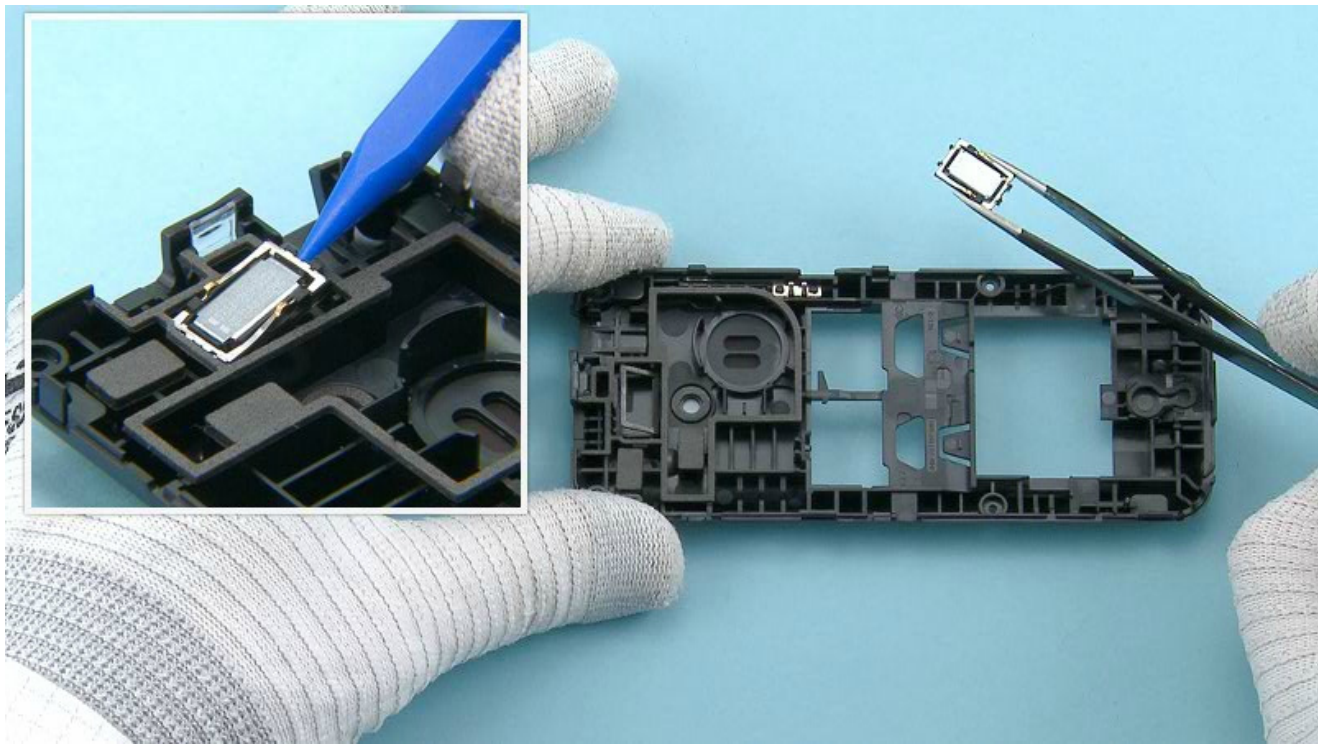
18) Clean the SPEAKER ADHESIVE residues from the D-COVER.



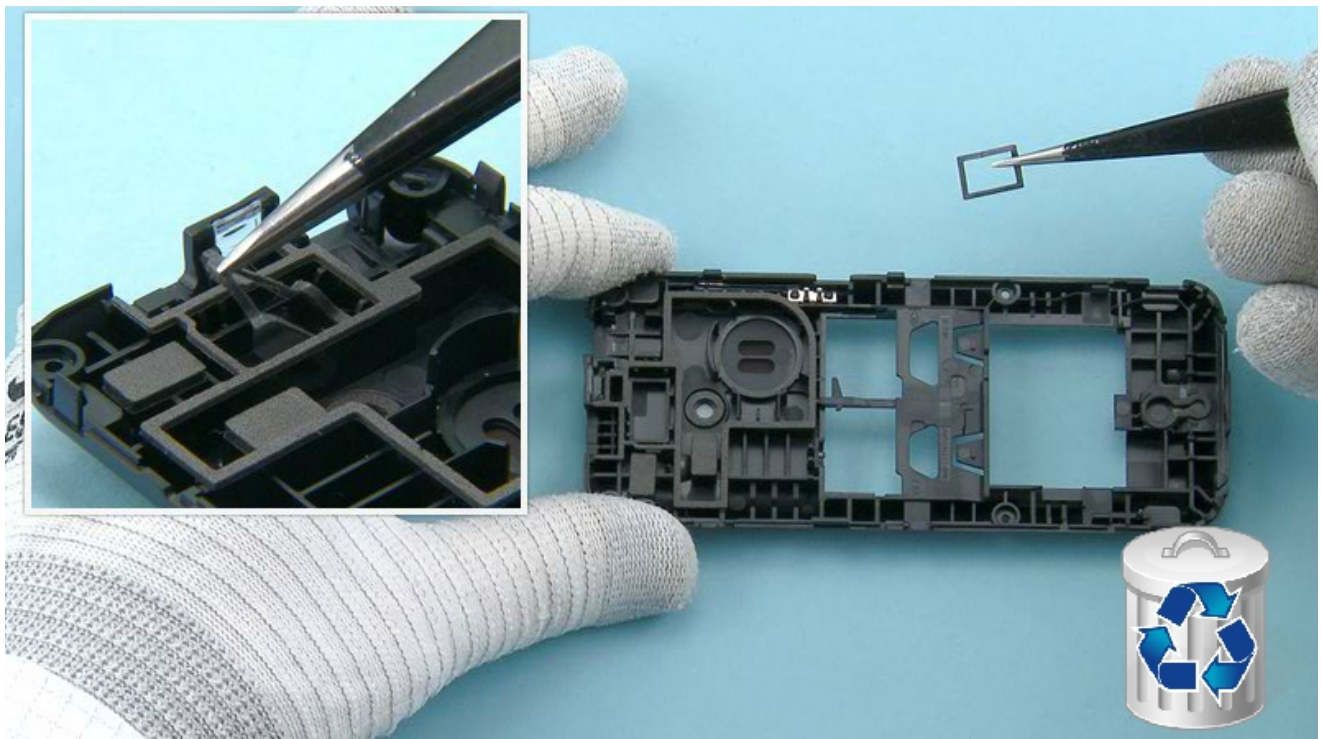
19) Use the dental tool to release the SPEAKER GASKET. Remove and discard the SPEAKER ADHESIVE. Be careful not to damage yourself or the SPEAKER with the sharp end of the dental tool.



20) Remove the SPEAKER ADHESIVE from the SPEAKER with the SS-93. Do not use the SPEAKER ADHESIVE again. Discard it.



21) Use the sharp end of the SS-93 to lever out the EARPICEE. Remove the EARPICEE.



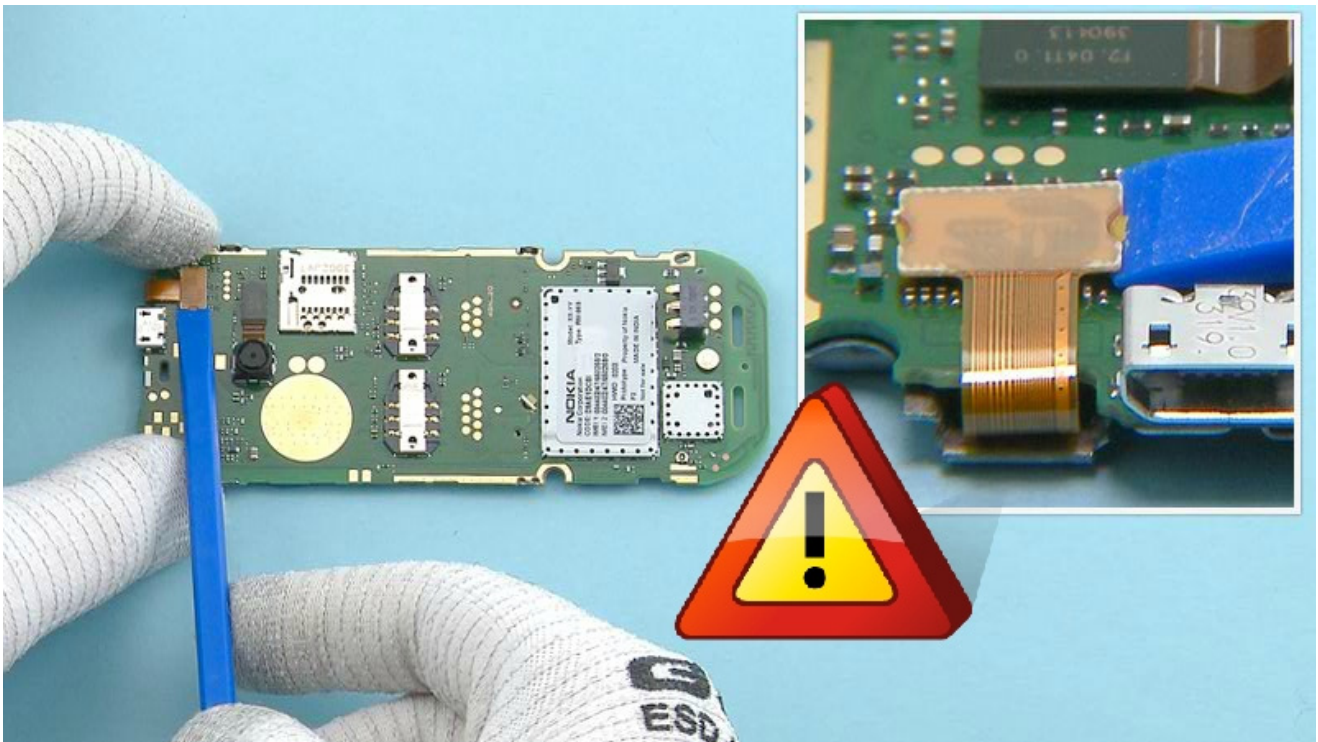
22) Remove and discard the EARPICEE GASKET. Do not use it again.



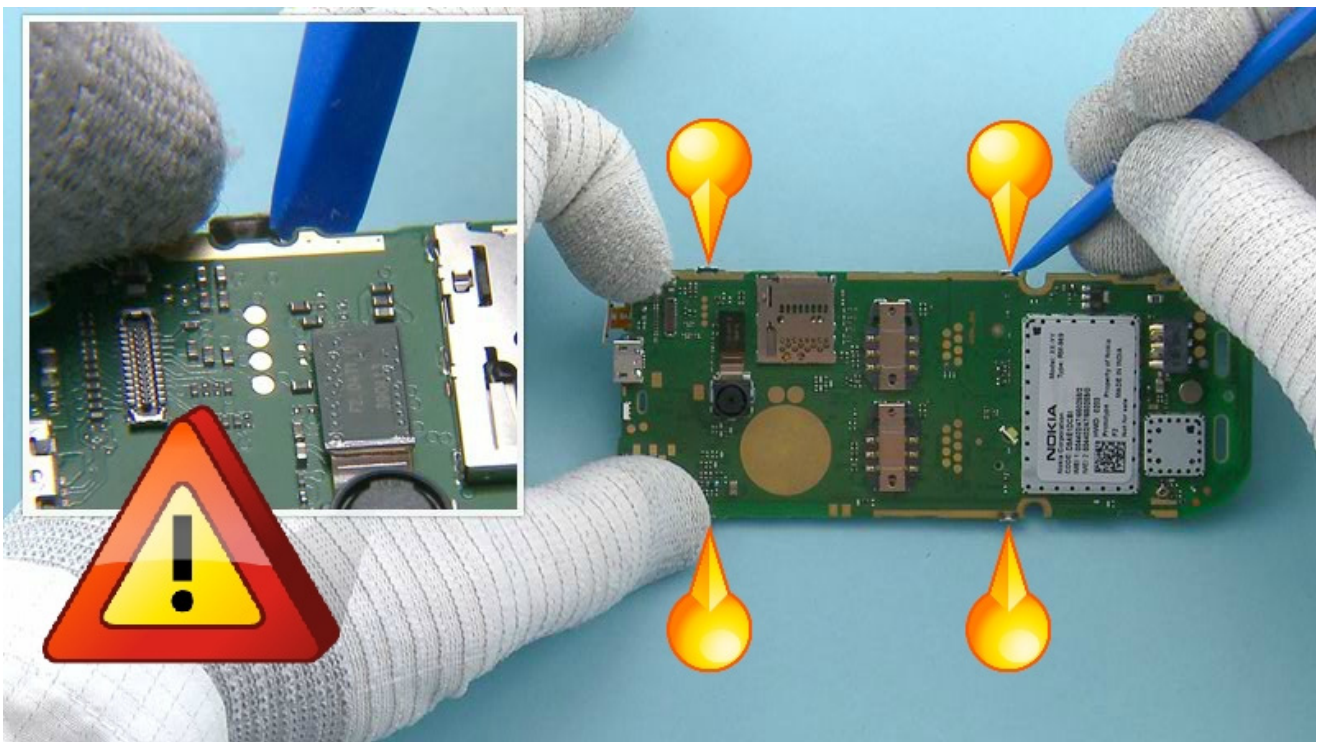
23) Release the SPEAKER MESH with the SS-93 as shown.



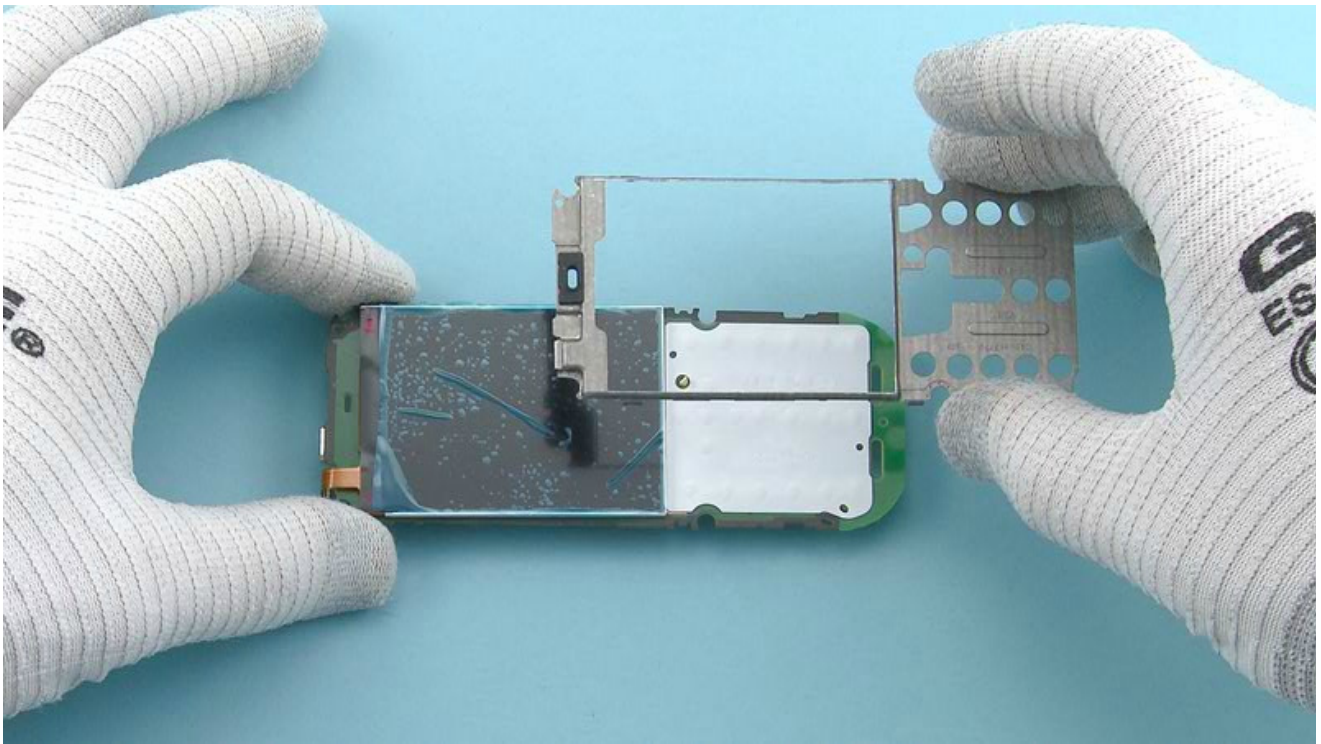
24) Remove and discard the SPEAKER MESH. Do not use it again.



25) Open the DISPLAY connector from the shown side with the SS-93.
Be careful not to damage the connector or any nearby components.



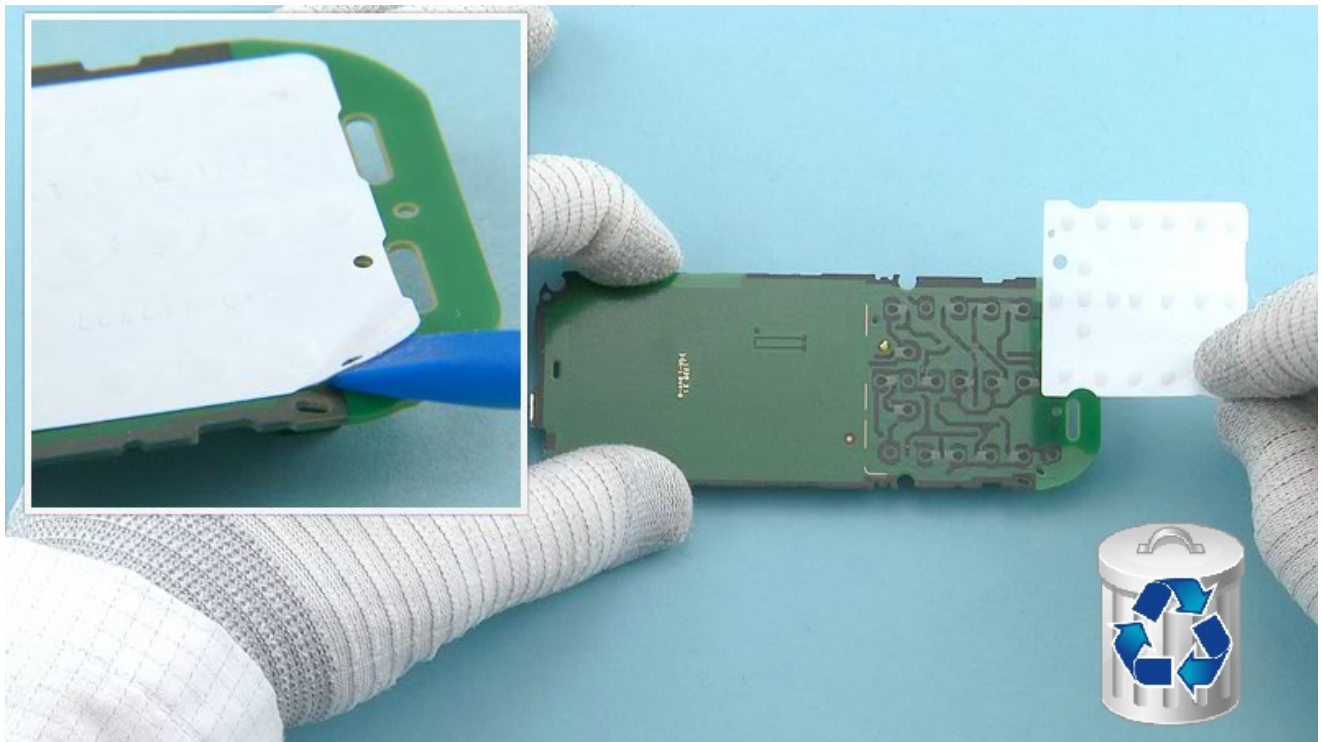
26) Open the four UI SHIELDING clips with the SS-93.
Be careful not to damage the ENGINE BOARD.



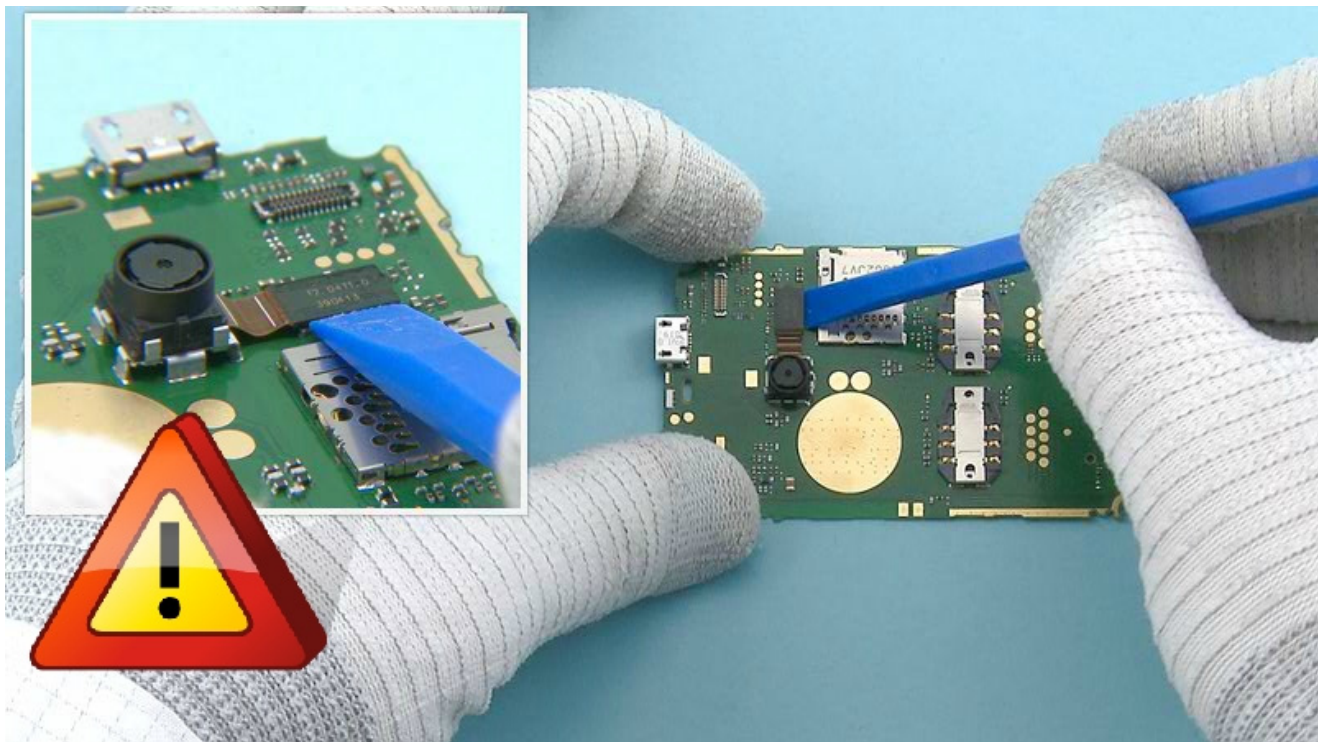
27) Remove the UI SHIELDING.



28) Remove the DISPLAY.

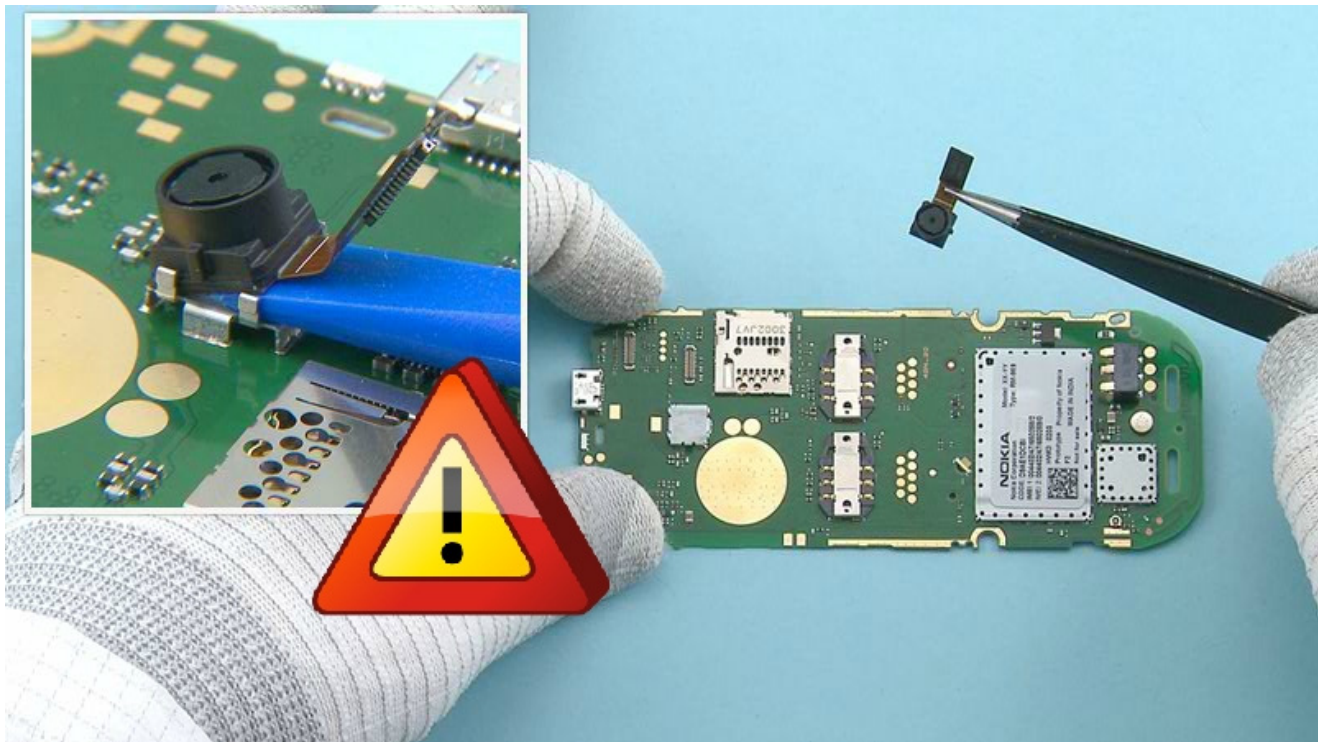


29) Release the DOMESHEET with the SS-93. Peel off and discard the DOMESHEET. Do not use it again.



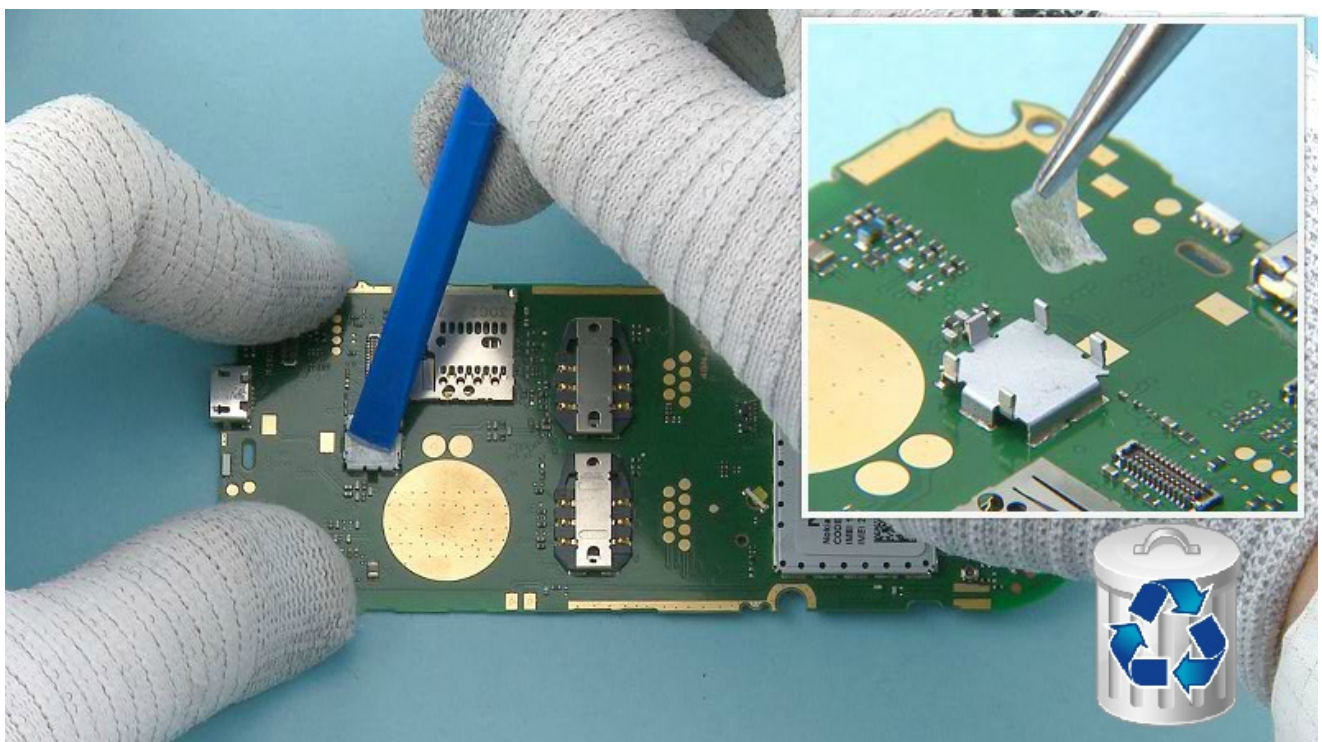
30) Open the CAMERA connector with the SS-93.

Be careful not to damage the connector or any components nearby.

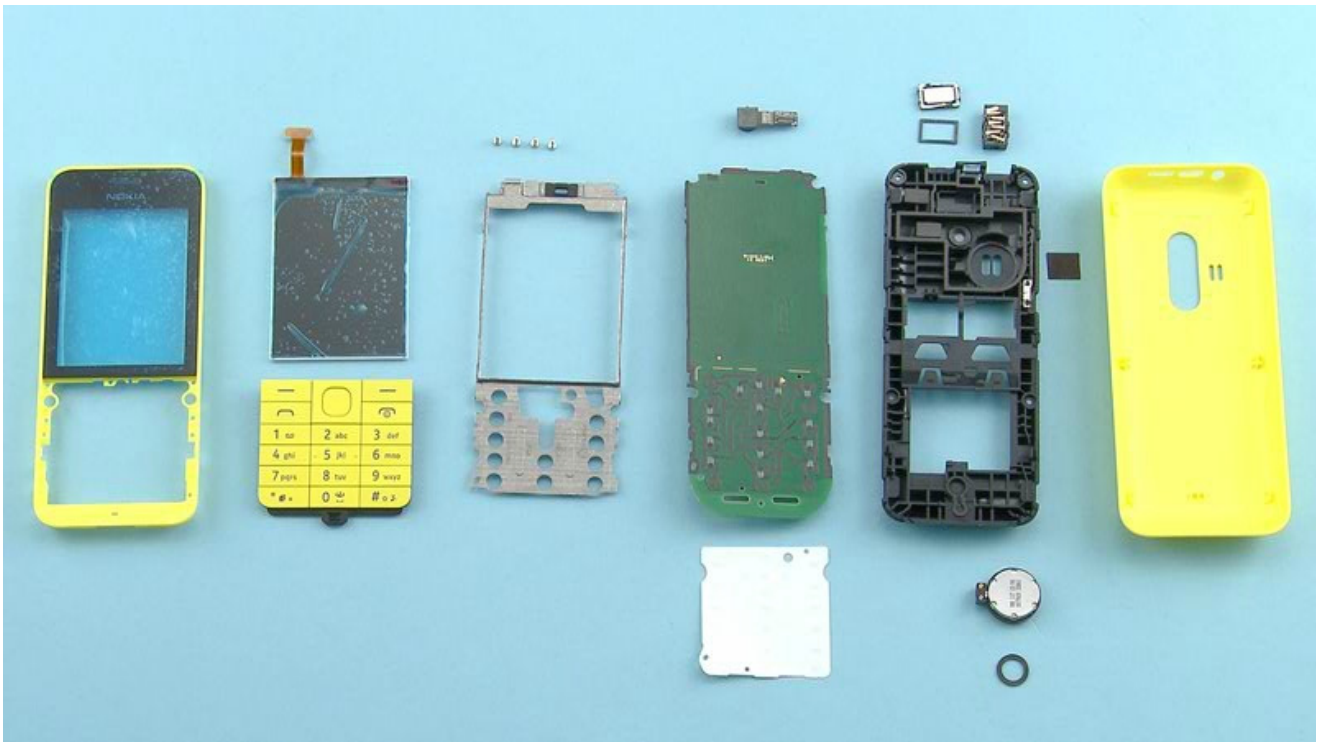


31) To release the CAMERA from its socket push the SS-93 under the CAMERA carefully as shown. Remove the CAMERA.

Be careful not to damage the CAMERA.

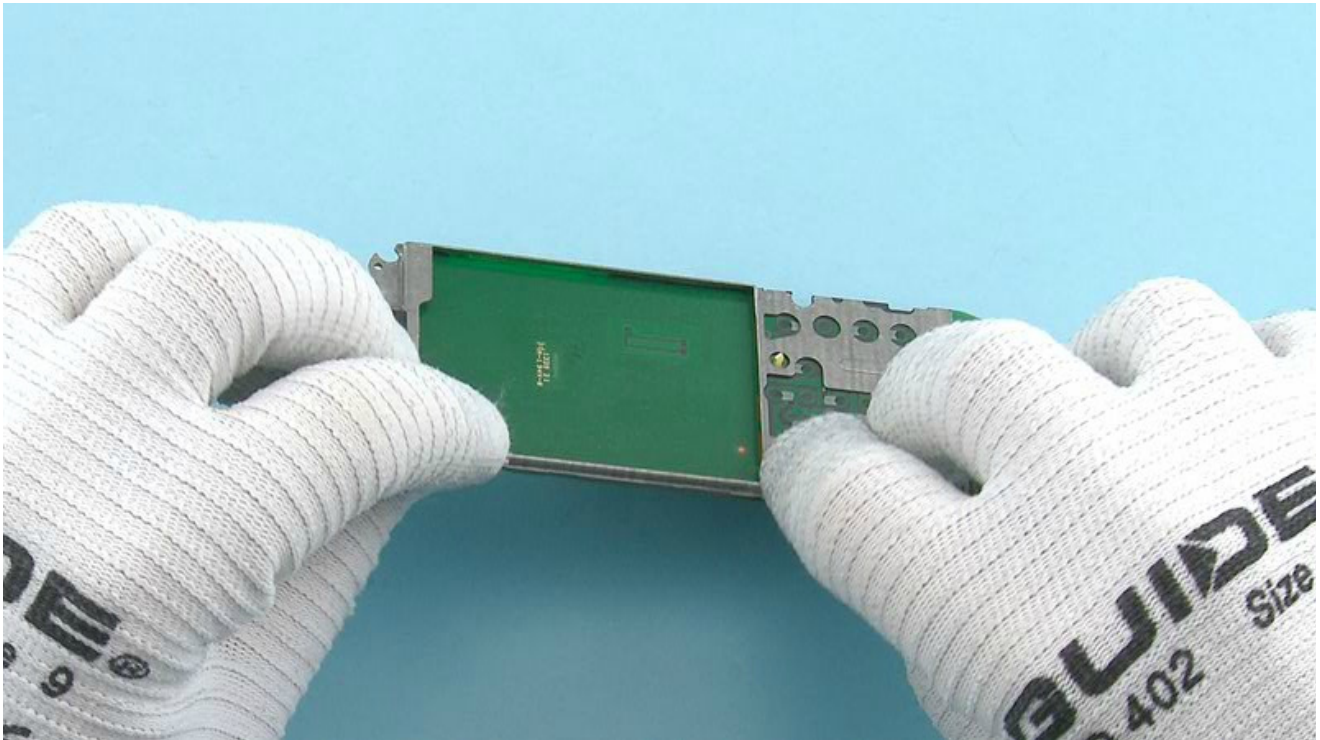


32) Use the SS-93 to remove the CAMERA adhesive remains from the camera socket. Do not use the adhesive again.

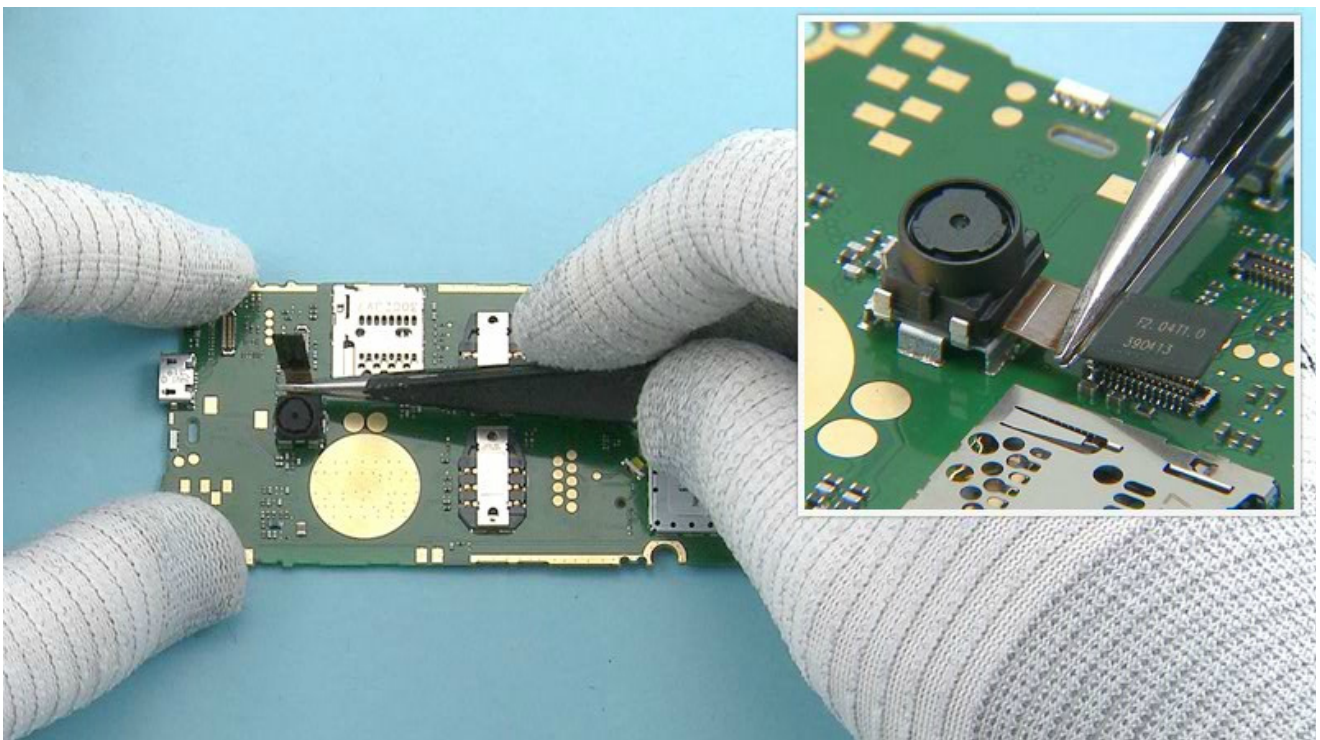


50) The Nokia 220 disassembly procedure is complete.

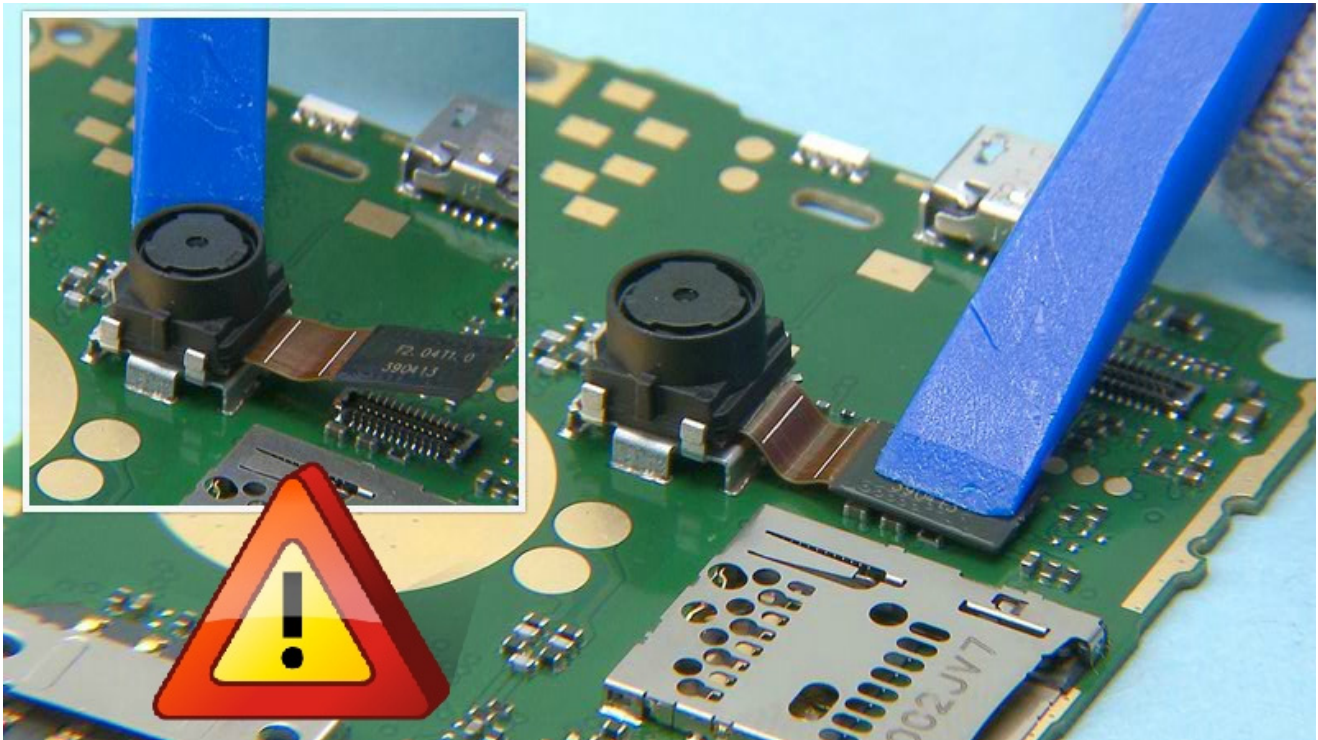
-END OF DISASSEMBLY-



1) Note that before doing any solder repair for ENGINE BOARD you must attach the UI SHIELDING to the ENGINE BOARD. This prevents damaging the KEY LED.

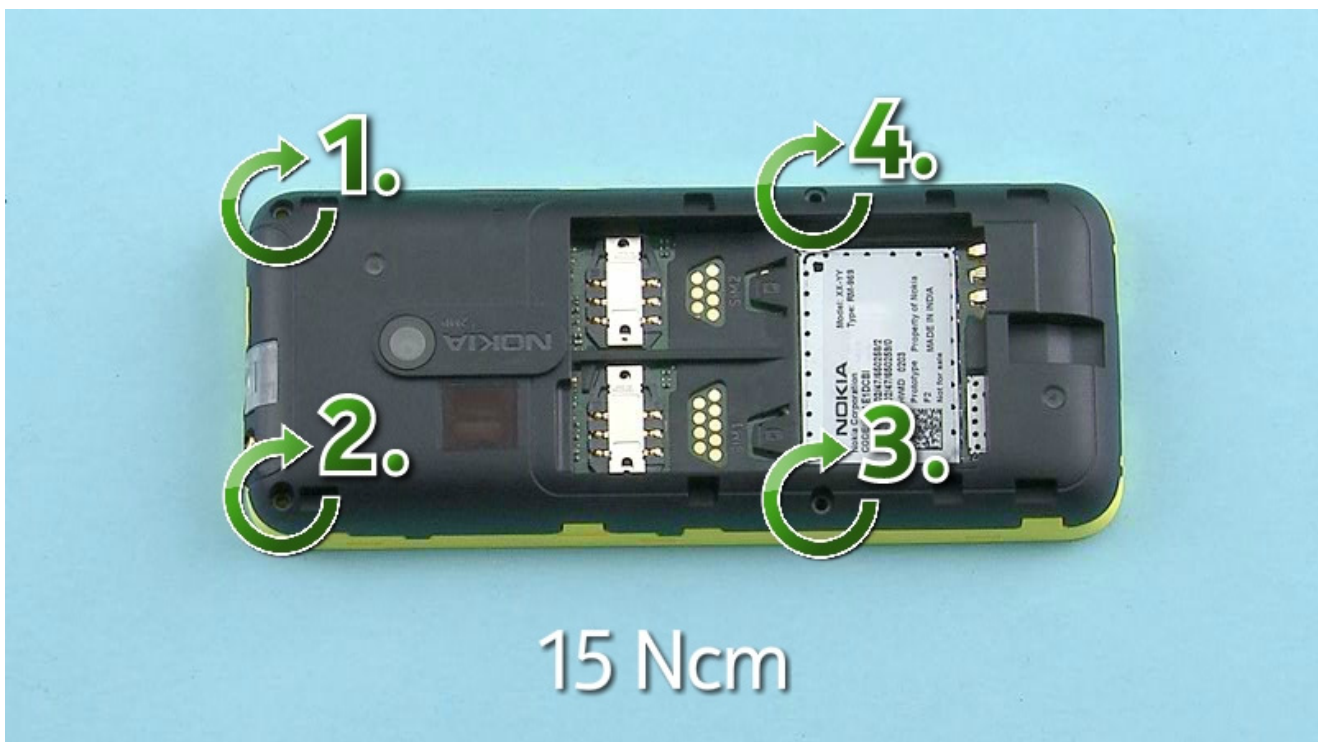


2) Place the CAMERA to its place as shown and make sure it is aligned correctly.



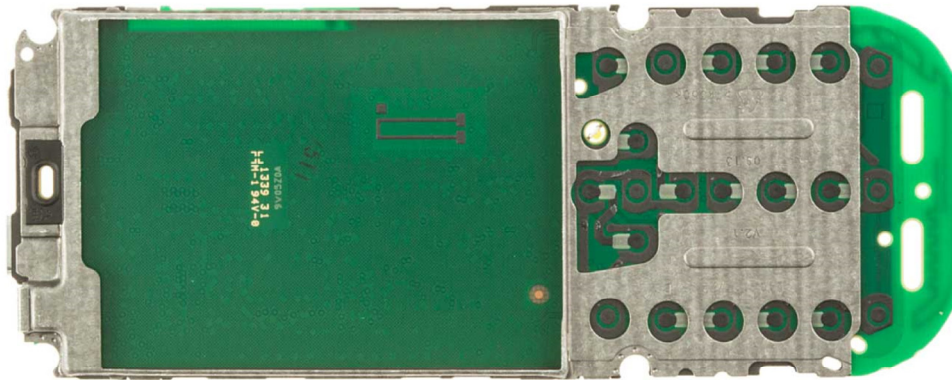
3) Push the CAMERA with the SS-93 to activate the adhesive. Connect the CAMERA connector with the SS-93.

Be careful not to damage the CAMERA, the CAMERA connector or any components nearby.

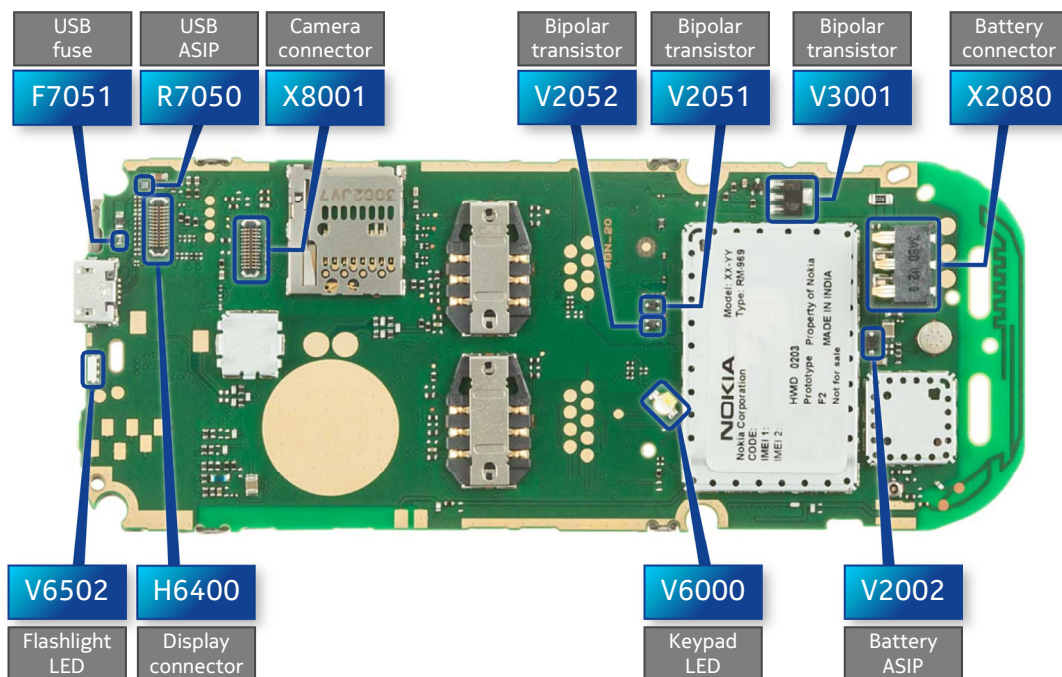


4) Tighten the four Torx+ size 4 screws in the order shown to the torque of 15 Ncm.

TOP



BOTTOM





CA-190CD Service cable

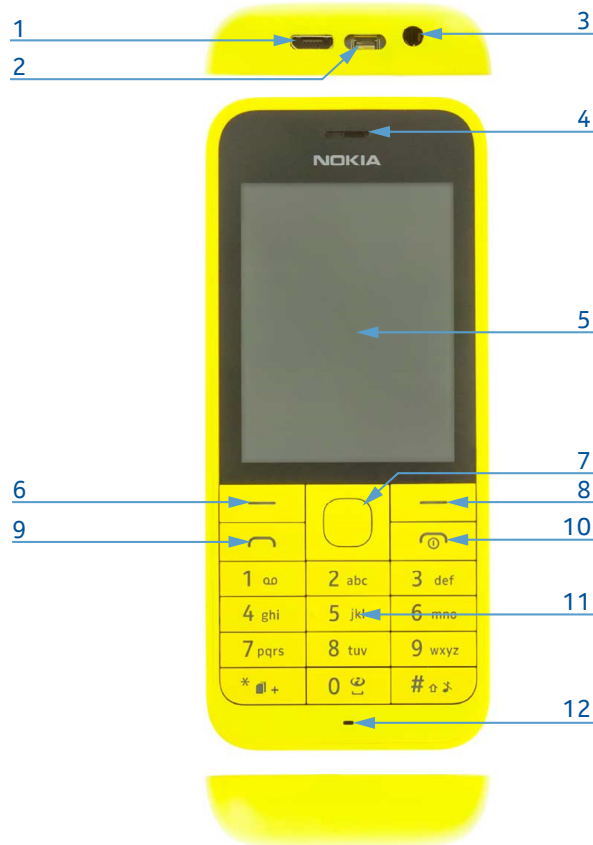


AC-18 (Global)
AC-20B (Brazil)
AC-19C + CA-190CD (PRC)
Travel charger

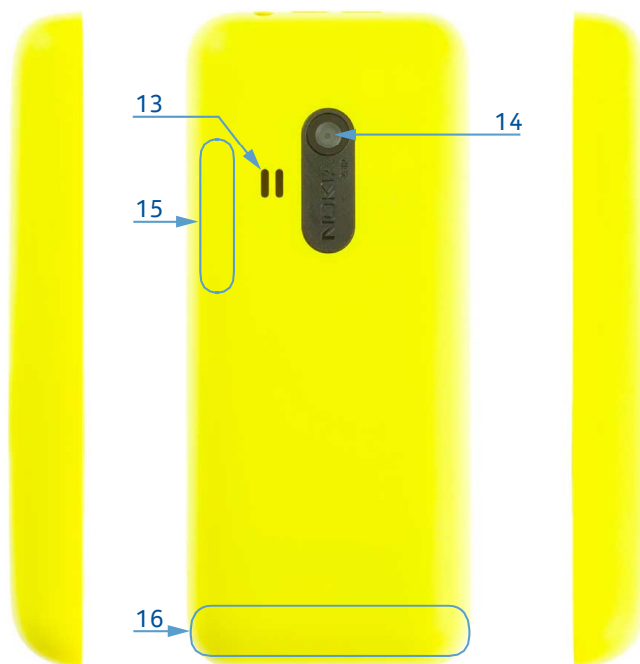


Nokia Standard Toolkit (v2)

For more information, refer to the Service Bulletin (SB-011) on Nokia Online. Supplier or manufacturer contacts for tool re-order can be found in "Recommended service equipment" document on Nokia Online.



- 1 — Charger connector
- 2 — Flashlight
- 3 — 3.5mm headset connector
- 4 — Earpiece
- 5 — Display
- 6 — Left selection key
- 7 — Scroll key
- 8 — Right selection key
- 9 — Call key
- 10 — End/Power key
- 11 — Keypad
- 12 — Microphone
- 13 — Loudspeaker
- 14 — Camera
- 15 — BT antenna area
- 16 — Main antenna area



Flashing concept

