

GT-P3100_REV0.6

2012.02.14

sheet01 : 2.5G RF, TRANSCEIVER, 3G RF

sheet02 : GPS, BT/WIFI

sheet03 : PMB9811 CP, DDR SDRAM, SIM

sheet04 : AUDIO part

sheet05 : IF CON

sheet06 : OMAP4430 AP, MOVINAND

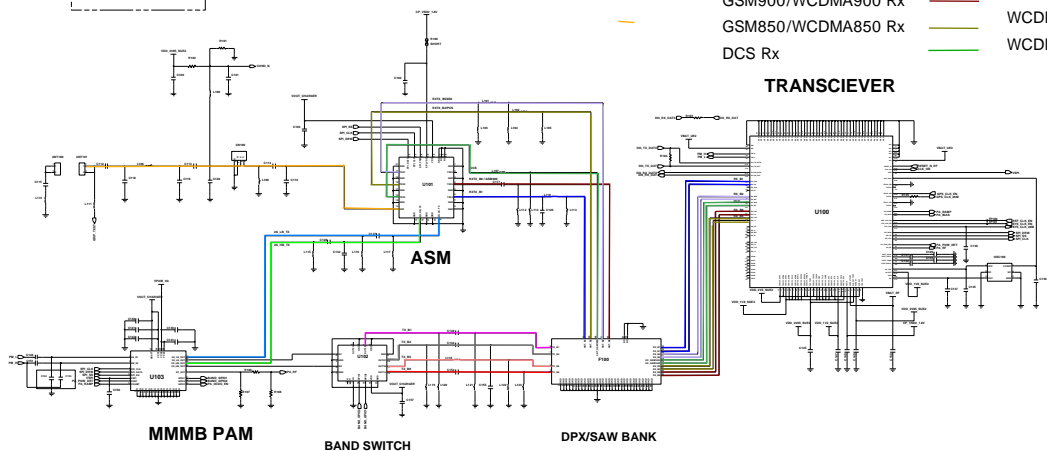
sheet07 : AP PMIC, CHARGER, BAT CON

sheet08 : LCD Part, IRDA & KEY

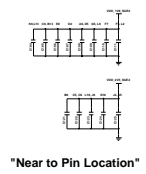
sheet09 : 3M CAM & TSP

Project	
Sheet No.	
Sheet Title	
Appr. By	
Appr. Date	
GT-P6200_MAIN_REV0.9	
Sheet No.	
Sheet Title	
Appr. By	
Appr. Date	

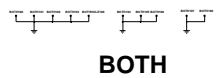
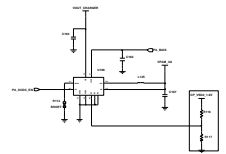
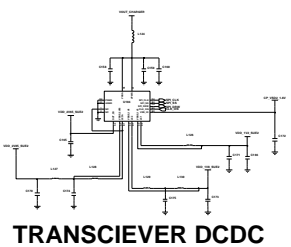
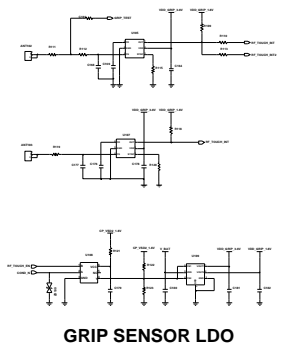
RF_PART



- Legend for signal lines:
- Ant
 - GSM900/WCDMA900 Rx
 - GSM850/WCDMA850 Rx
 - DCS Rx
 - WCDMA2100 Rx
 - WCDMA2100 Tx
 - WCDMA1900 Tx
 - WCDMA900 Tx
 - WCDMA850 Tx
 - GSM_LB_Tx
 - GSM_HB_Tx
 - WCDMA1900RX/PCS

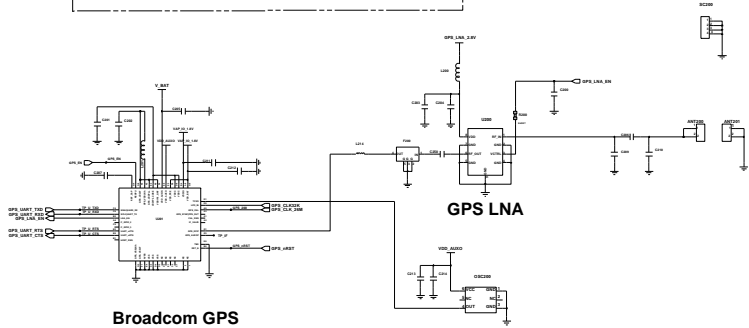


GRIP SENSOR



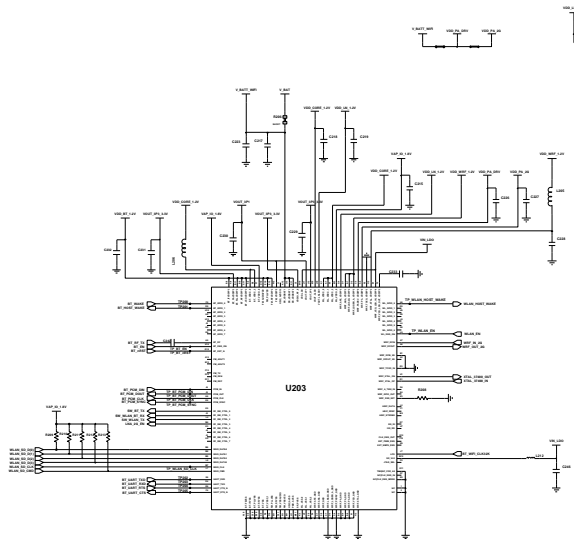
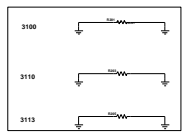
WARNING: CONFIDENTIAL
 ALL INFORMATION CONTAINED HEREIN IS UNCLASSIFIED EXCEPT WHERE SHOWN OTHERWISE

CONNECTIVITY_PART

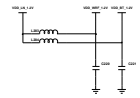


Broadcom GPS

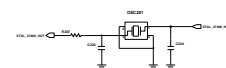
GPS LNA



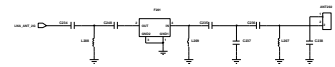
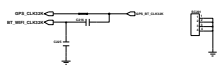
U203

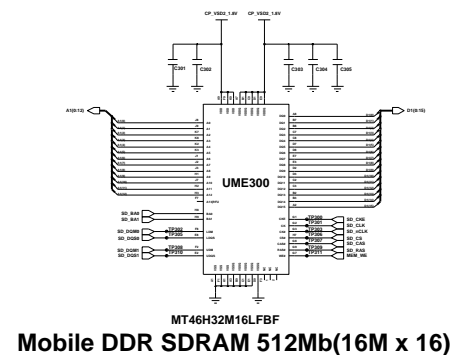
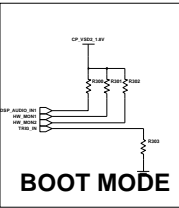
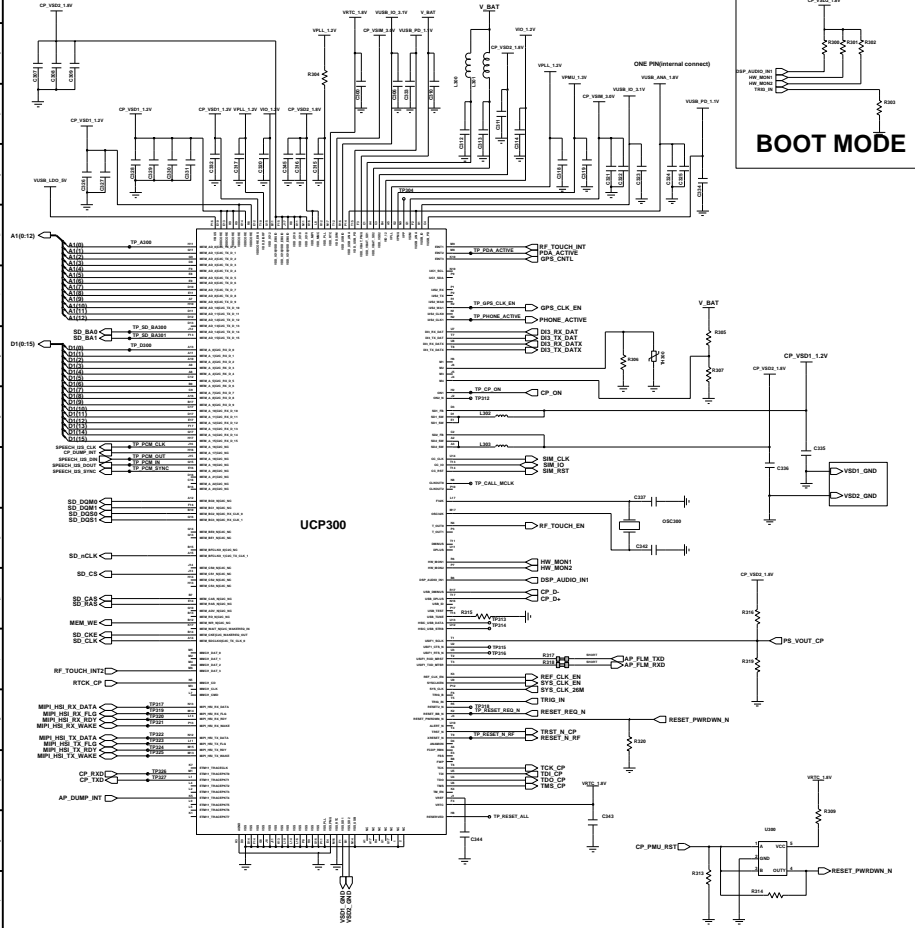


BT/WIFI OSC

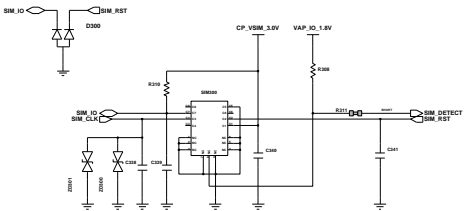


WIFI LNA(2G)

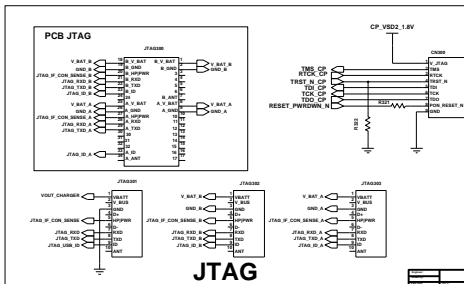




MT46H32M16LFBF
Mobile DDR SDRAM 512Mb(16M x 16)



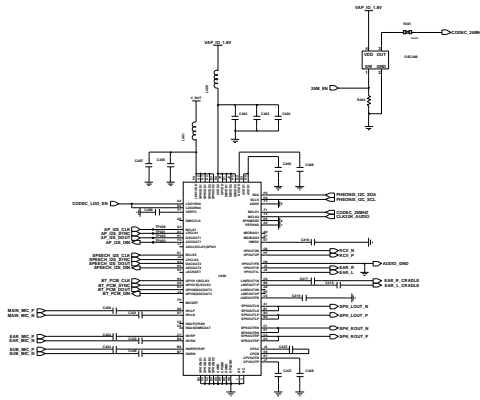
SIM Connector



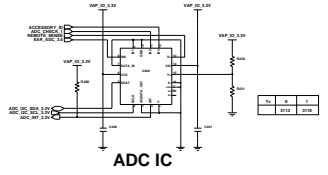
JTAG

WARNING: CONFIDENTIAL
 ALL INFORMATION CONTAINED HEREIN IS UNCLASSIFIED
 DATE 08/20/2013 BY 60322 UCBAW/SJS/STP

Audio PART

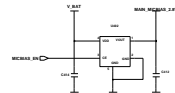


AUDIO CODEC

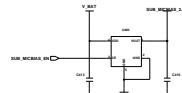


ADC IC

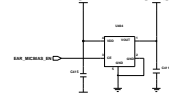
MIC BIAS LDO



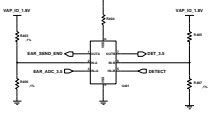
MAIN MICBIAS



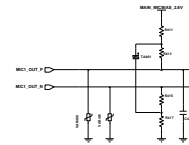
SUB MICBIAS



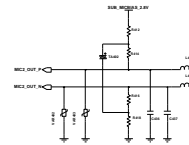
EAR MICBIAS



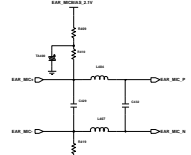
Comparator



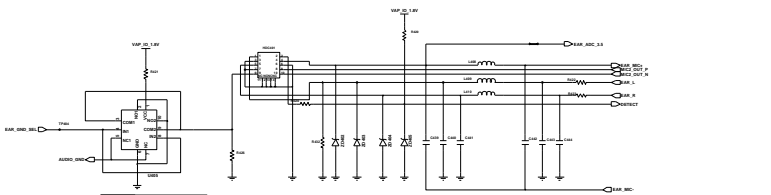
Main MIC



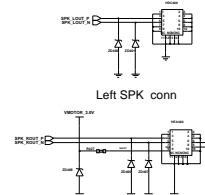
Sub MIC



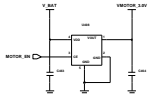
Ear MIC



3.5PI EARJACK + SUB MIC



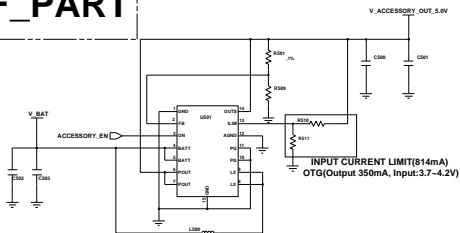
Right SPK / MOT conn



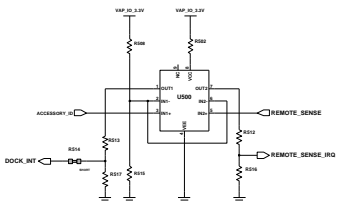
Motor LDO(3G)

Part Number	AUDIO & MOTOR
Revision	1.0
Release Date	01/01/2010
Author	GT-01000, MAIN REV0.9
Checked By	
Approved By	

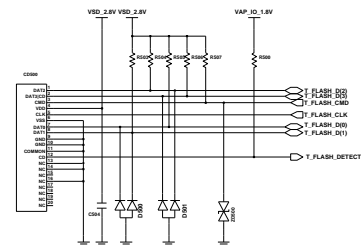
IF_PART



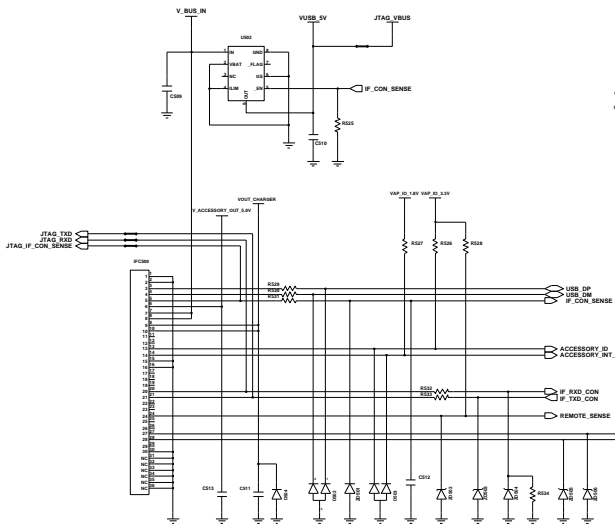
ACCESSORY_PWR



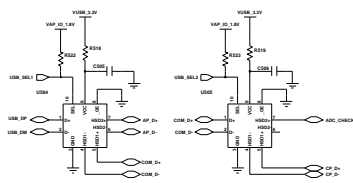
ACCESSORY_INT



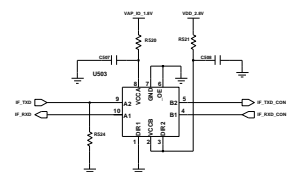
T-FLASH_CONN



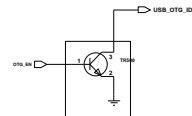
30pin I/F CONNECTOR



USB SWITCH IC



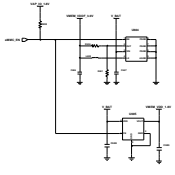
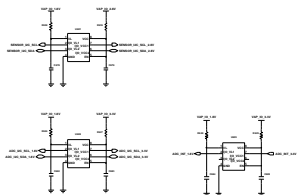
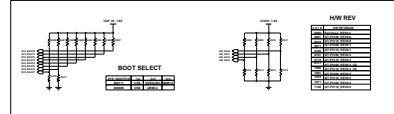
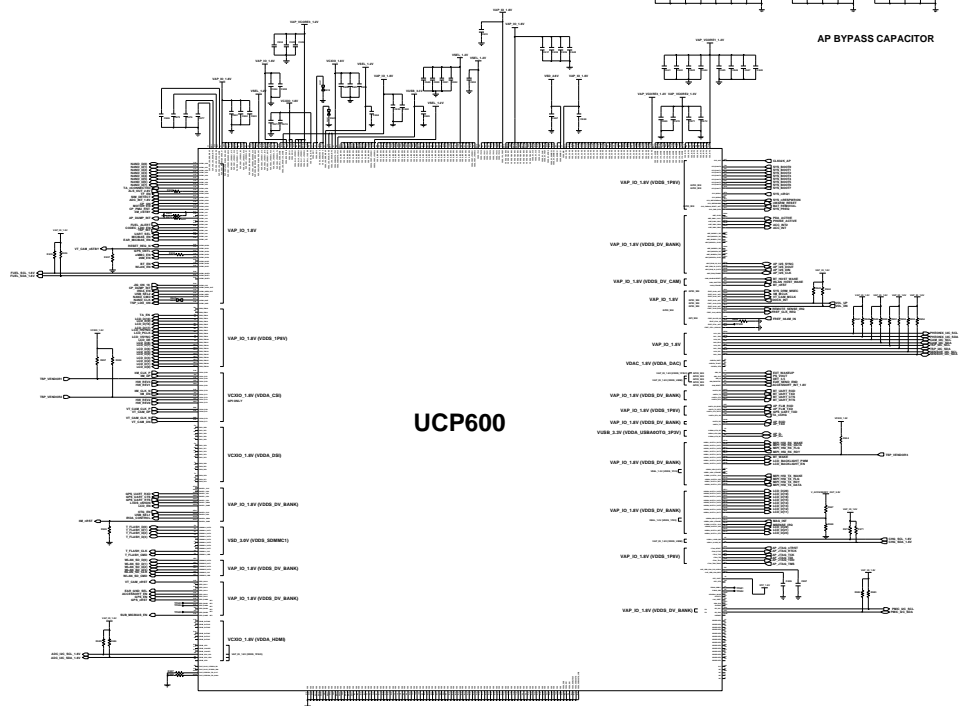
UART Level Shifter



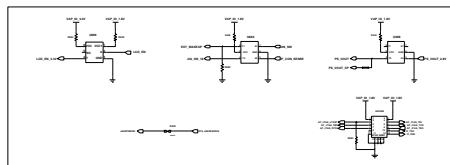
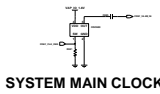
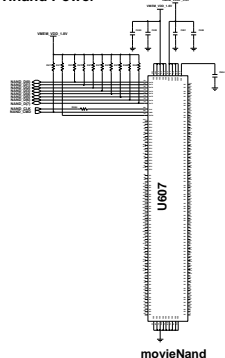
OTG Enable

Project		INTERFACE	
Created by PATA	Titus	Rev	001
FILE CODE		DATE	
OPERATION CODE			
WIP STATUS CODE			
GT-P7500_MAIN_REV0.2			

AP_PART

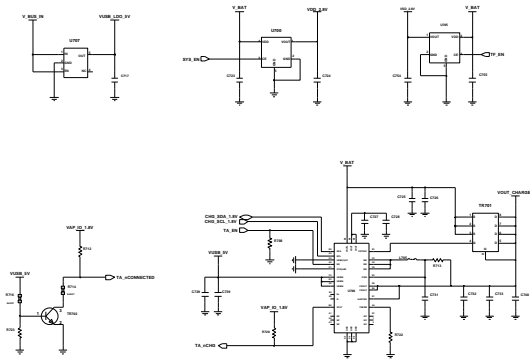
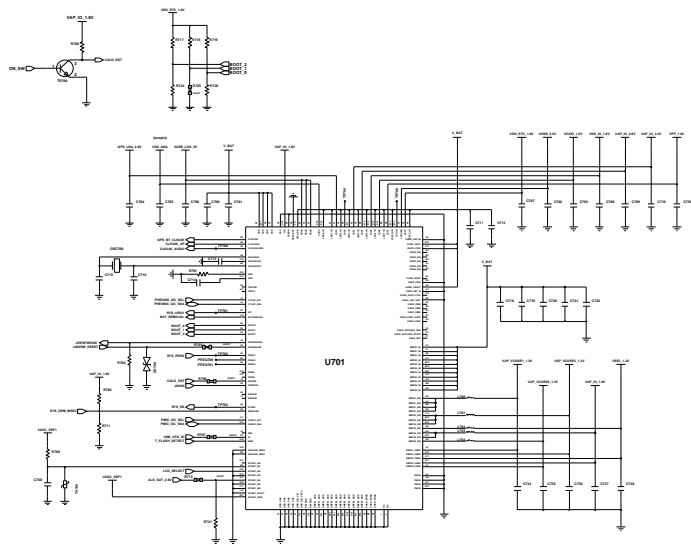


Movinand Power

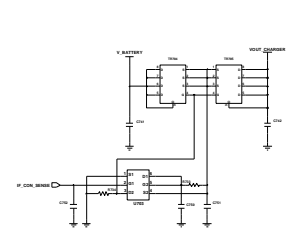


UNCLASSIFIED
 EXCEPT WHERE SHOWN
 OTHERWISE, THIS DOCUMENT IS UNCLASSIFIED
 DATE 08-14-2011 BY 60322 UCBAW/SJS

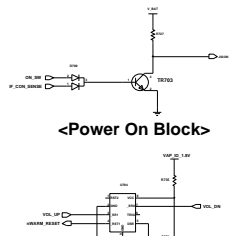
POWER_PART



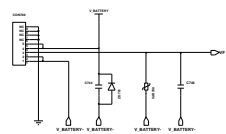
SWITCHING CHARGING BLOCK



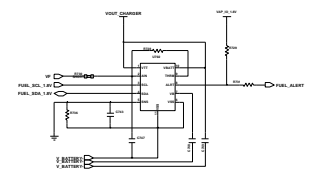
EXT_JIG_POWER_CONTROL



RESET IC

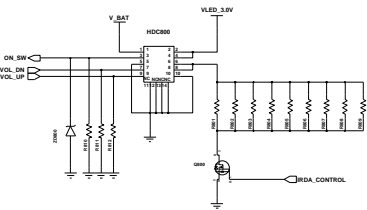


BATTERY CONTACT

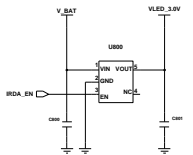


FUEL GAUGE

POWER PART	
Part Number	GT-PT500_MAIN_REV02
Revision	02
Author	
Checked	
Approved	

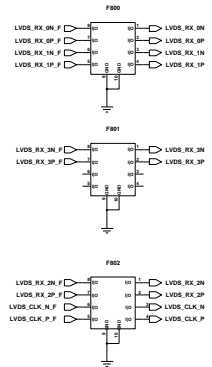
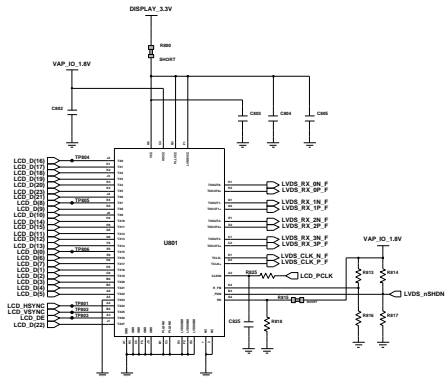


POWER & VOLUME KEY

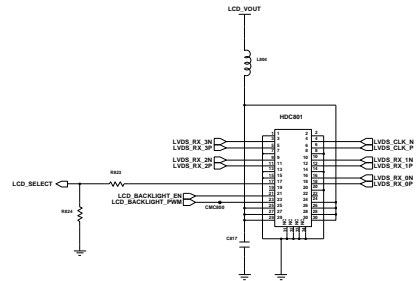
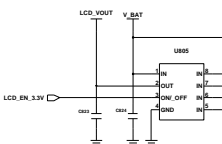
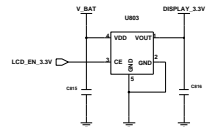


IRDA LDO(option)

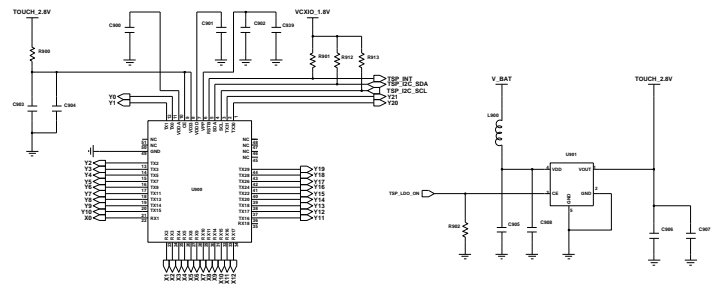
LCD_PART



LVDS Transmitter

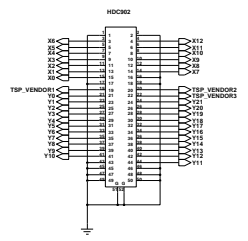


TSP PART



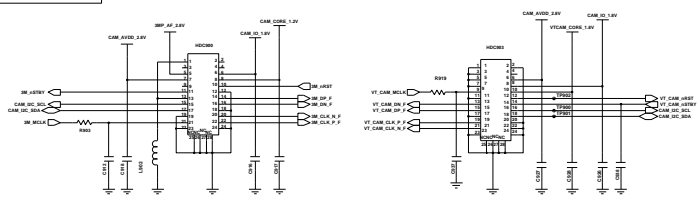
TOUCH SENSOR IC

TOUCH LDO



50Pin TOUCH Con.

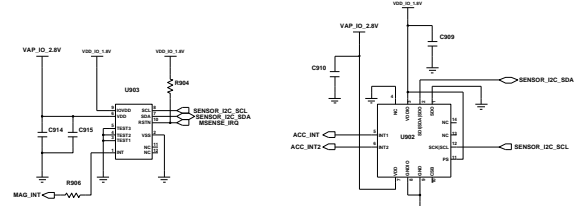
CAM PART



3M CAM

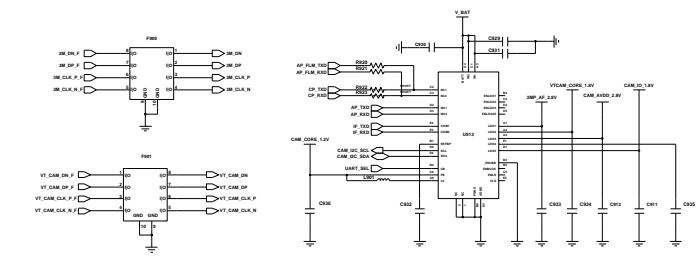
VT CAM

SENSOR_PART



Magnetic Sensor

Accelerometer Sensor



RCV & Proximity

Revision		TSP_SENSOR	
Author	YJ	Title	TSP_SENSOR
Design	YJ	Part No.	GT-P7500_MAIN_REV0.2
Check	YJ	Rev.	0.2
Appr.	YJ	Rev. No.	0.2
Design Date	2013.08.01	Rev. Date	2013.08.01