

魅族科技(中国)有限公司

MEIZU TECHNOLOGY CO., LTD.

地址: 广东省珠海市唐家湾科技创新海岸魅族科技楼

Add: Meizu Tech Bldg., Technology & Innovation Coast, Zhuhai 519085, Guangdong, China

Tel / 86-756-6116288

Fax / 86-756-6116200

Document number: MZ-CSGY-03-0182

L91 Firmware Upgrade Guide

(Version: V1.0)

Edited By: Zhichao Li

Reviewed By: Zhifeng Zhong

Approved By: Chuansan Wang

Issued Date: May 13th, 2016

Implemented Date: May 13th, 2016

L91 Firmware Upgrade Guide

I. Preparation

Hardware

1. One PC (Recommended configuration: dual-core CPU, 2 GB or more memory, 250 GB or more hard disk and Windows 7 operating system)
2. Data cable
3. Cellphone

Software (Downloaded from the network disk)

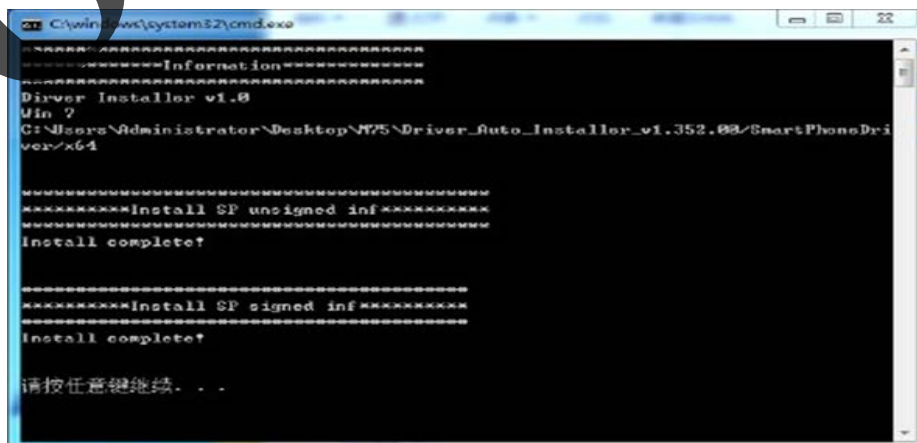
1. Flyme firmware package
2. Engineer firmware package
3. Upgrading tools (Includes “SFC Complete” and “Firmware upgrading tool”)
4. Upgrading driver includes:
 - ① Cellphone driver Driver_Auto_Install_v1.352.00
 - ② Softdog driver
 - ③ vcredist_x64 driver
 - ④ dotNetFx40_Full_x86_x64 driver
5. Connect with VPN

II. Install driver

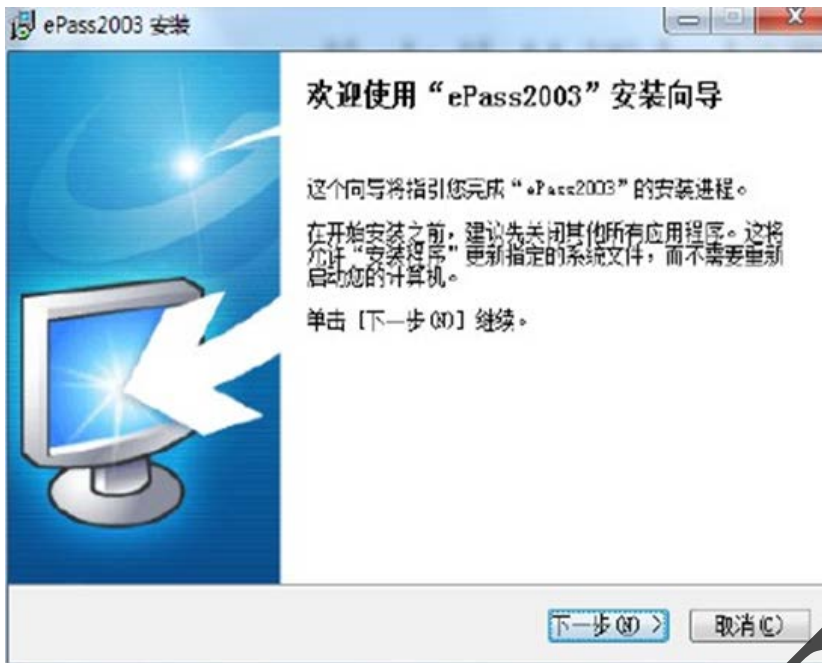
1. Install “Driver_Auto_Installer_v1.352.00” (If it is installed, skip this steps)
Run “Driver_Auto_Installer_v1.352.00” and double click “install”. The same dialogue window will pop up three to four times. Select “Always install the driver” every time to proceed with the installation.



The interface displays as the following picture, indicating that the MTK driver is installed.



2. Install the softdog driver. (If the driver has been installed, skip this step.)

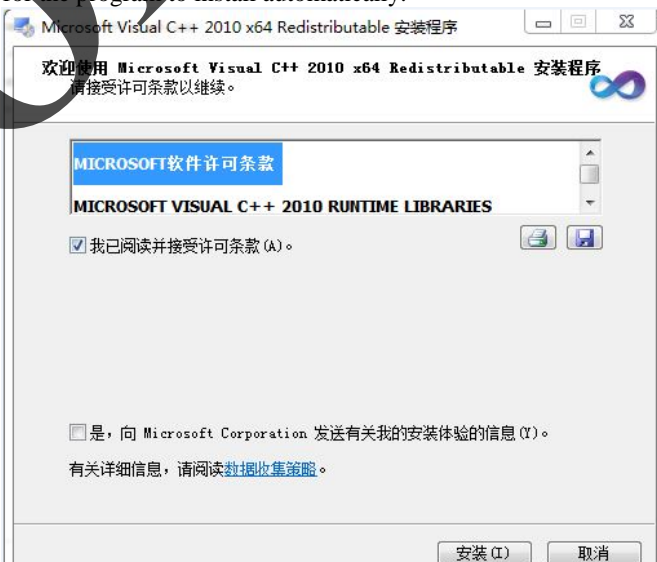


A message is displayed, indicating that the installation is completed.



3. Install vcredist_x64 driver (If the driver has been installed, skip this step.)

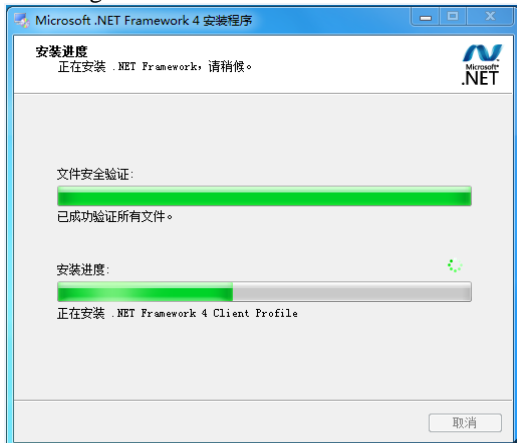
Open vcredist_x64 driver and click “Install” at the interface as the following picture then wait for the program to install automatically.



4. Install dotNetFx40_Full_x86_x64 driver (If the driver has been installed, skip this step.)
Open dotNetFx40_Full_x86_x64 and click "Install" at the interface as following picture.



Installing.....

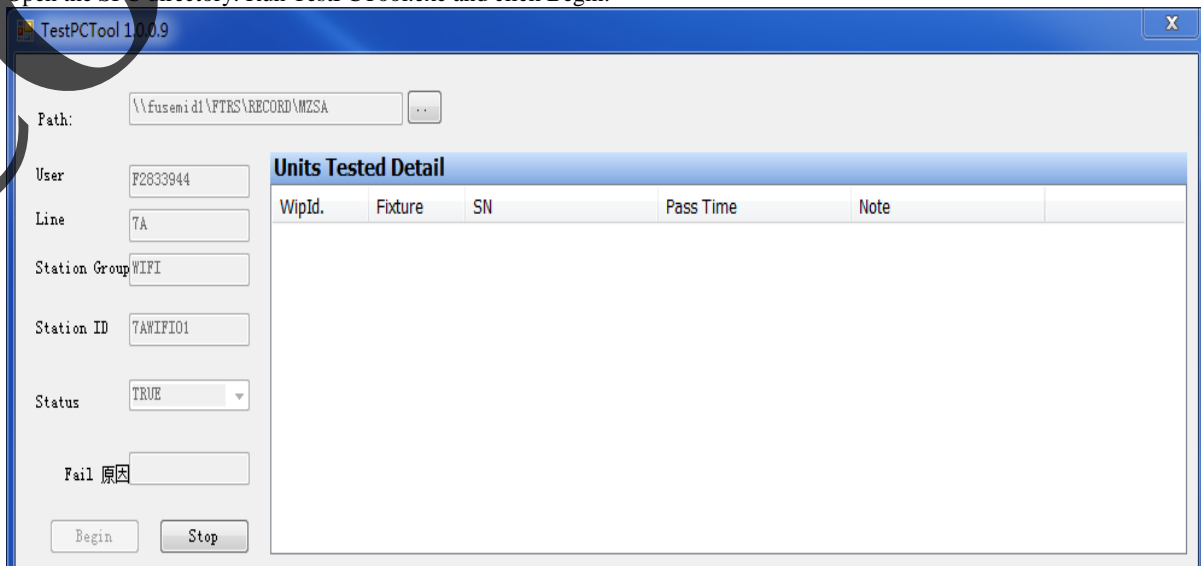


A message is displayed indicating that the installation is completed.



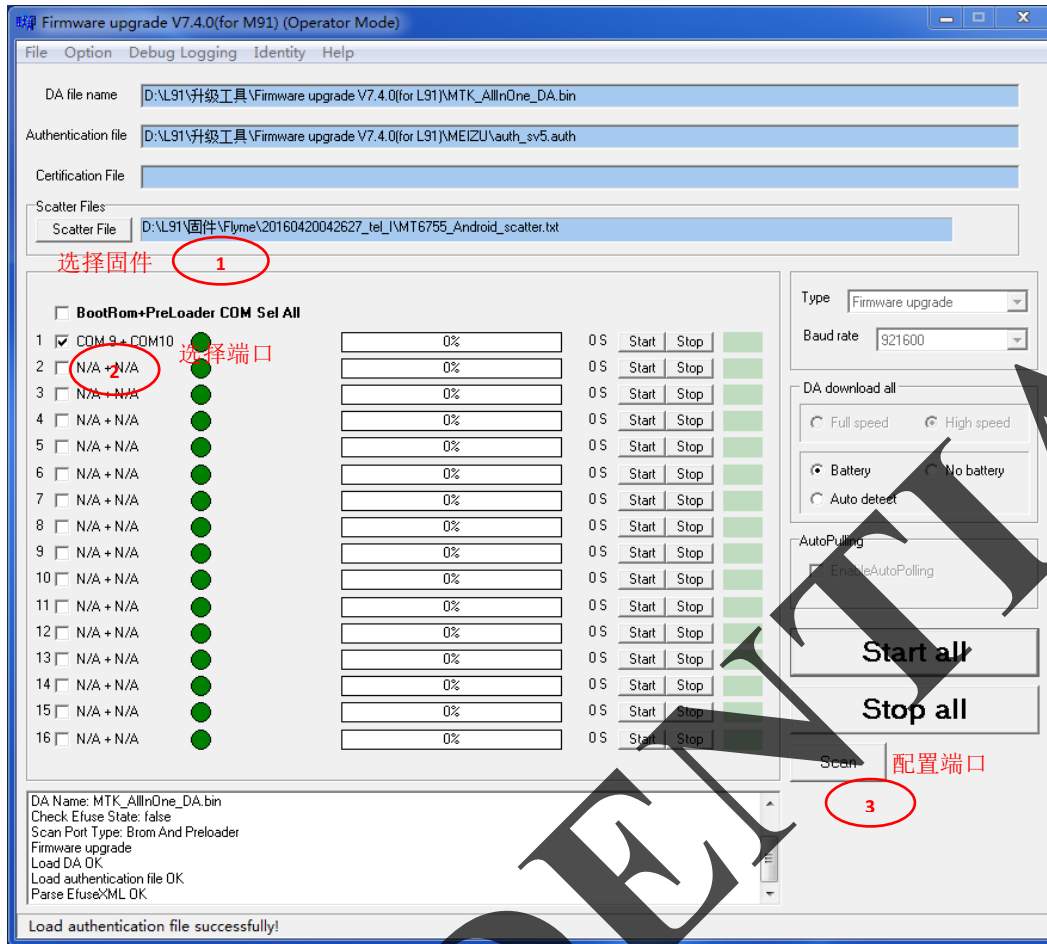
III. Flashing Procedures of FLYME Firmware

1. Open the SFC directory. Run TestPCTool.exe and click Begin.



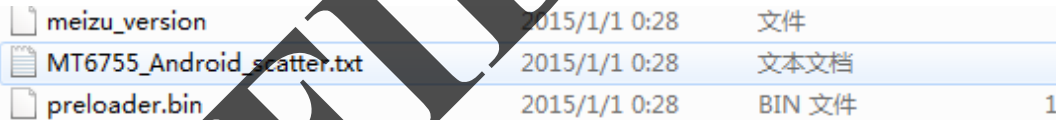
2. Open the Firmware upgrade tool and double click SPMultiPortFlashDownloadProject.exe.

SPMultiPortFlashDownloadProject.exe



Scan the ports according to the following procedures:

① Choose the right firmware:



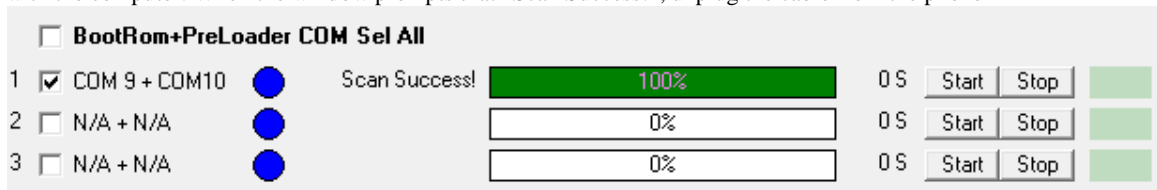
② Tick at the first box as indicated.



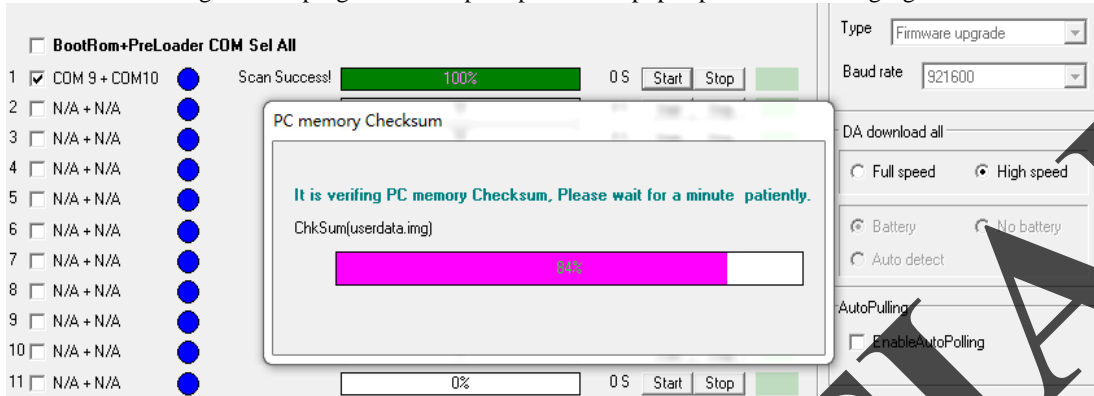
③ Click on "Scan" and click "Yes" on the prompt window.



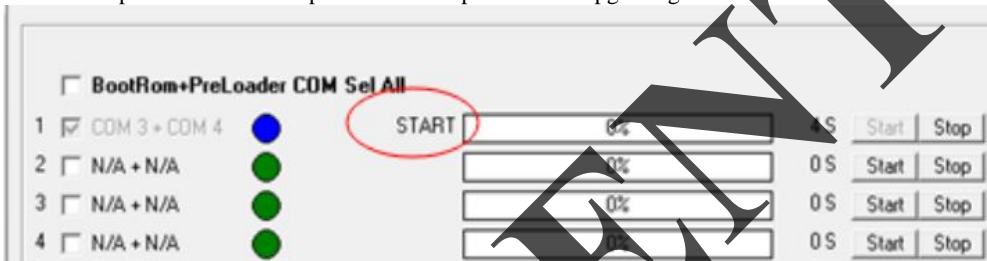
When the mobile phone is powered off, press the Volume minus button and insert the USB data cable to connect the phone with the computer. When the window prompts that "Scan Success!", unplug the cable from the phone



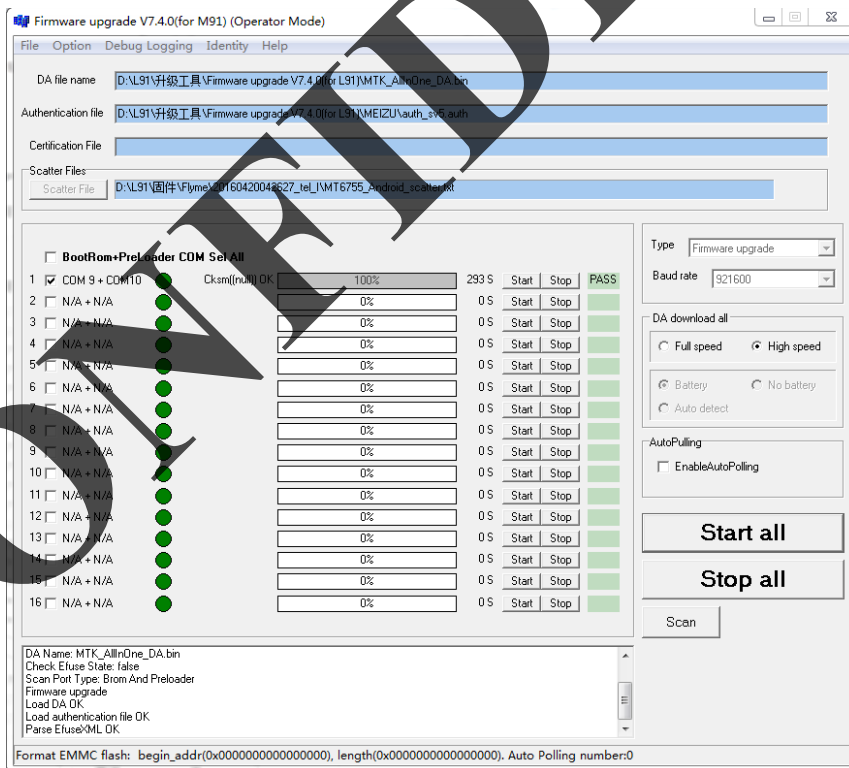
Click "Start" on the right of the progress bar. A prompt window pops up as the following figure.



3. When the progress bar of the prompt window is full, press the Volume minus button and insert the USB data cable to connect the phone with the computer. Then the phone starts upgrading.



4. The upgrade is completed as the gray progress bar indicating 100% full (as shown below).



5. Press the Power button to switch on the phone.

IV. Engineering Firmware Upgrading Guide (Please refer to FLYEME Firmware Upgrading Guide)