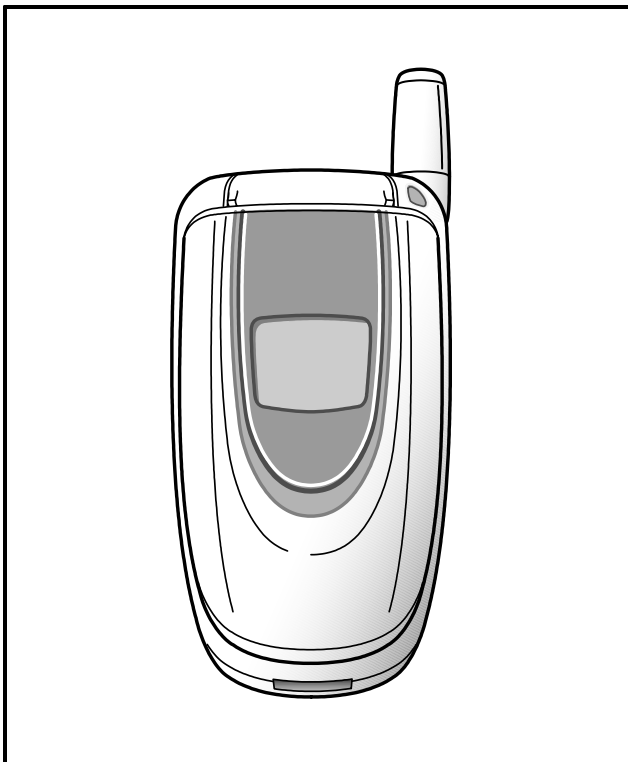


**SAMSUNG**

**GSM TELEPHONE  
SGH-E105**

# ***SERVICE*** *Manual*

**GSM TELEPHONE**

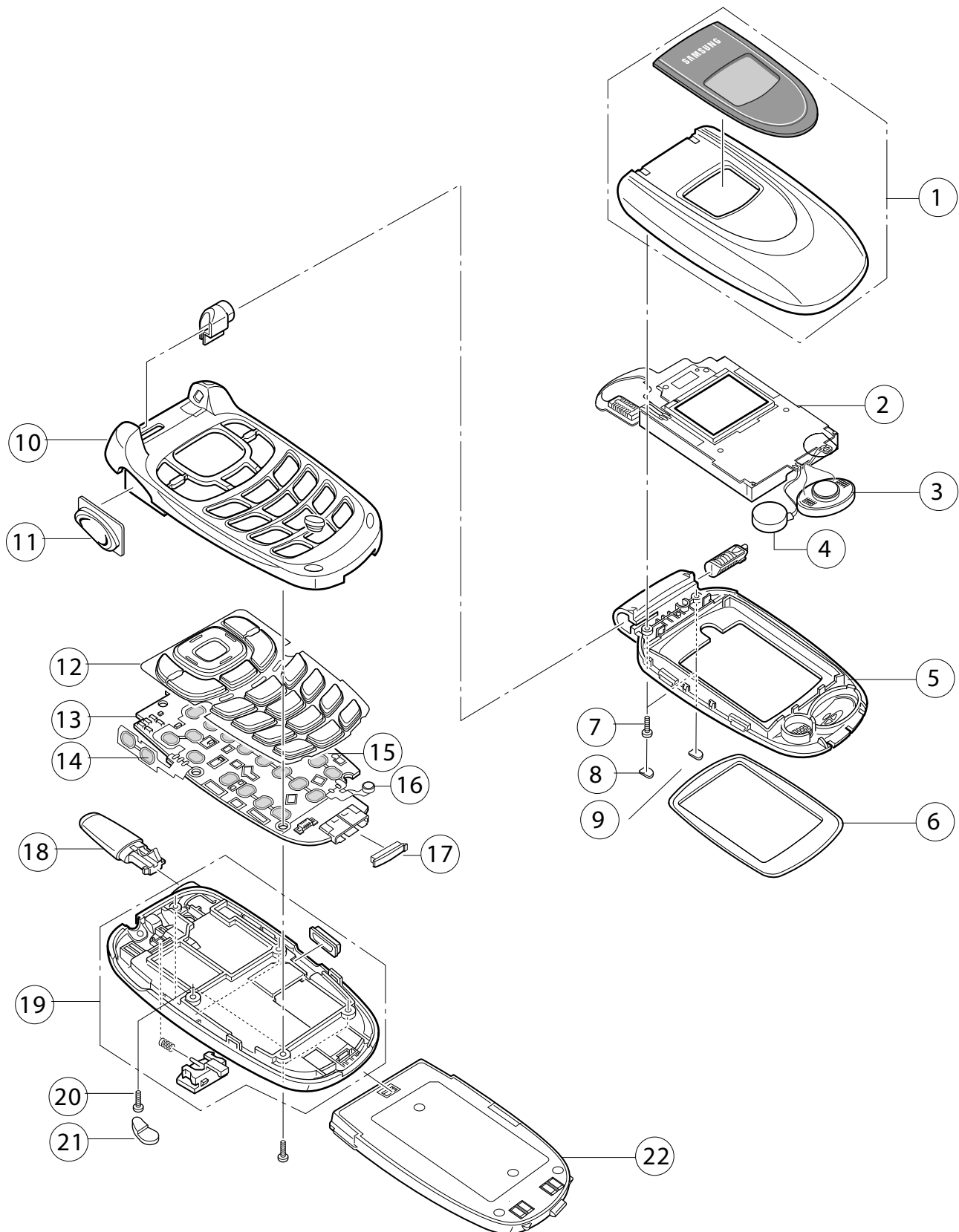


**CONTENTS**

1. Specification
2. Exploded Views and Parts List
3. Electrical Parts List
4. Flow Chart of Troubleshooting
5. Block Diagrams
6. PCB Diagrams

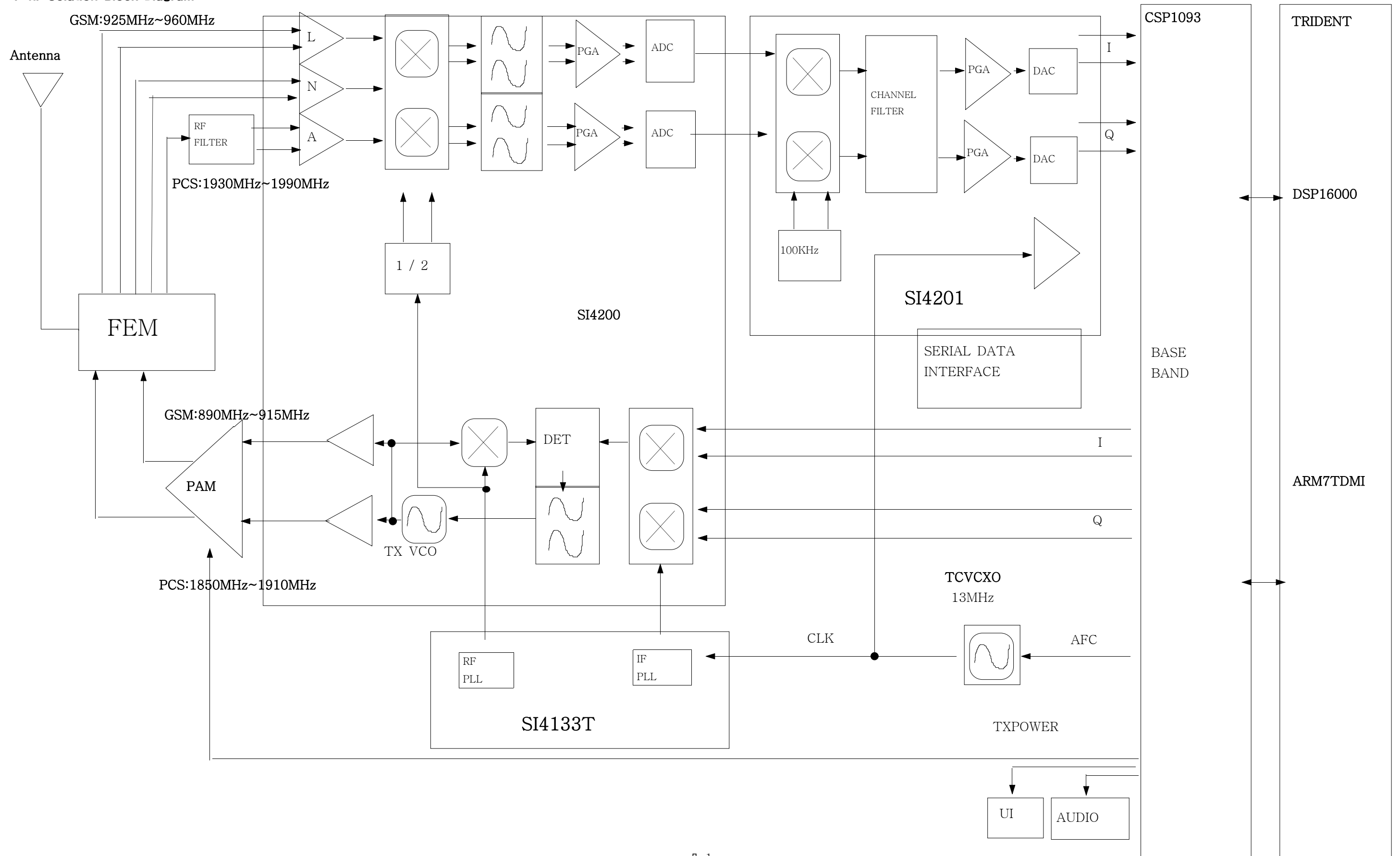
## 2. SGH-E105 Exploded View and its Parts list

### 1. Cellular phone Exploded View

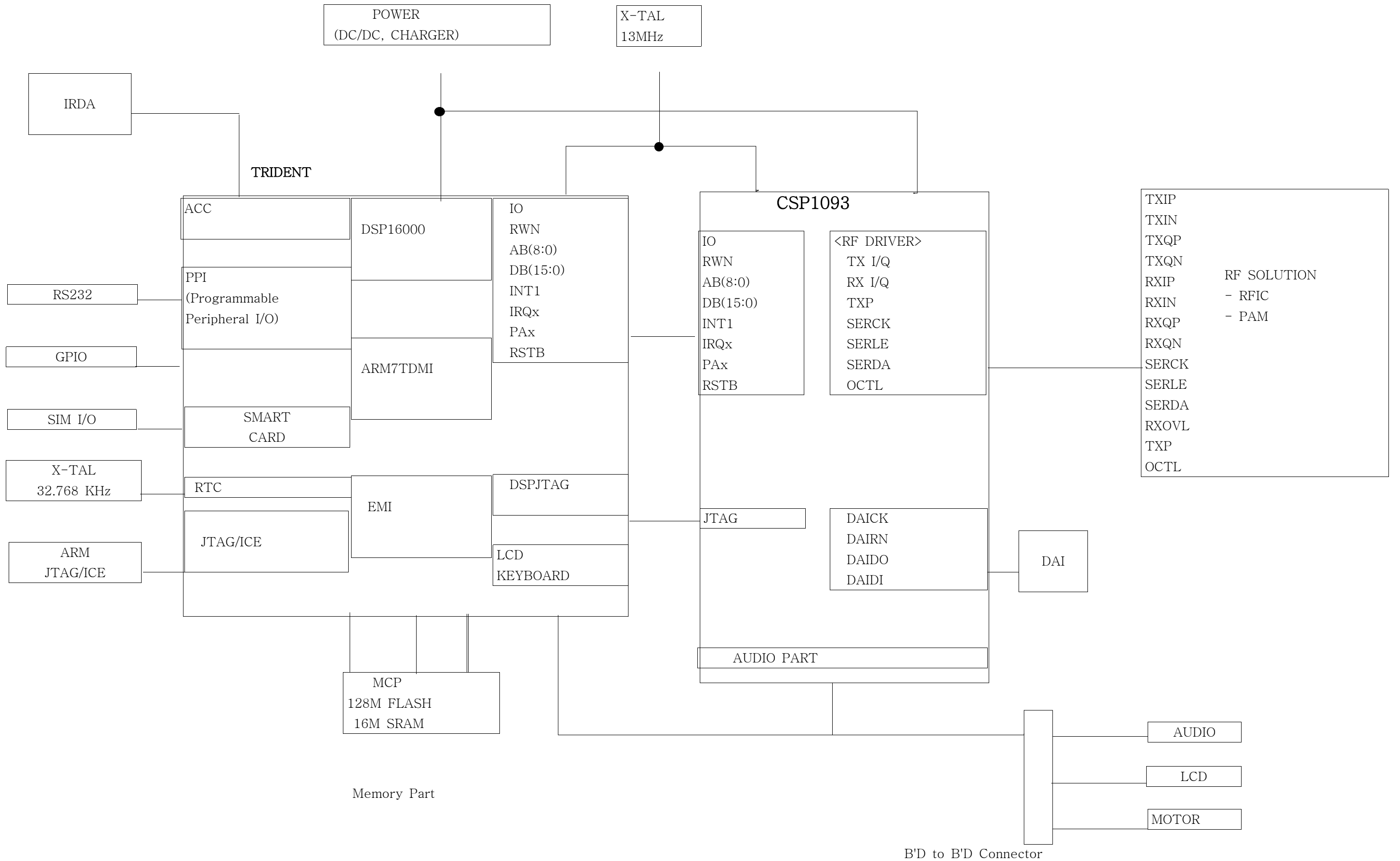


# 5. SGH-E105 Block Diagrams

## 1. RF Solution Block Diagram



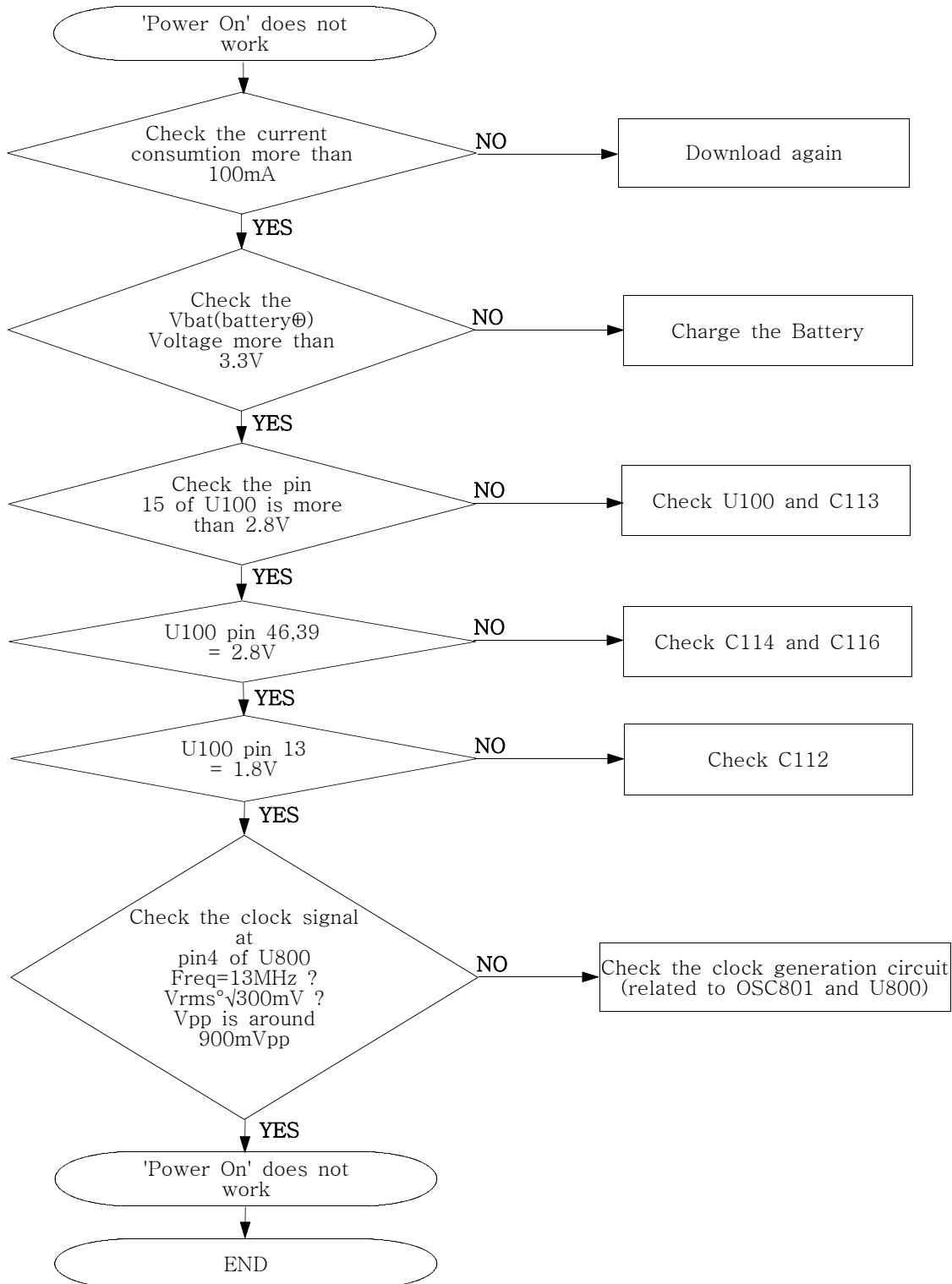
2. Base Band Solution Block Diagram



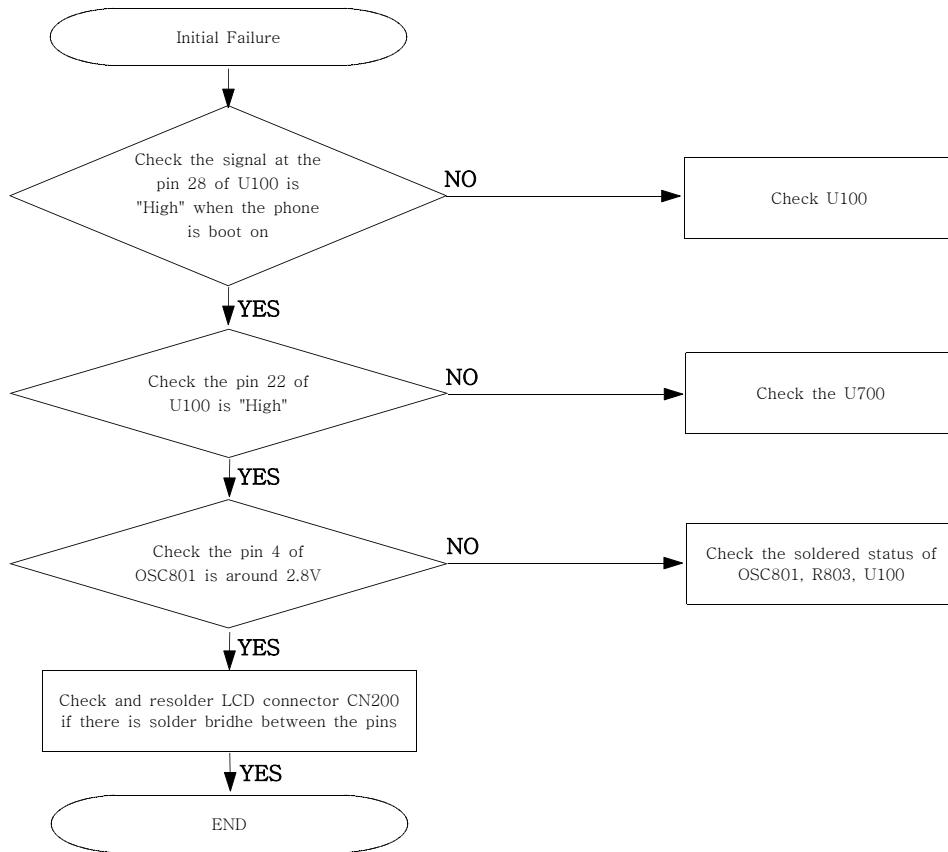
# 4. SGH-E105 Flow Chart of Troubleshooting and Circuit Diagrams

## 1. Baseband

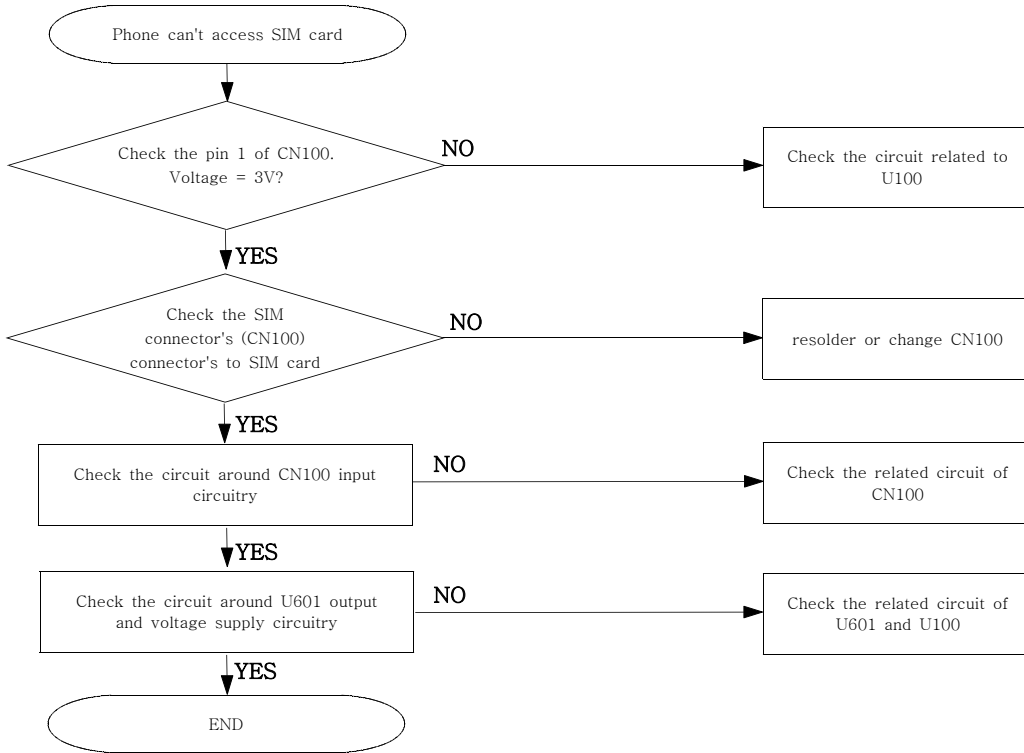
### 1. Power ON



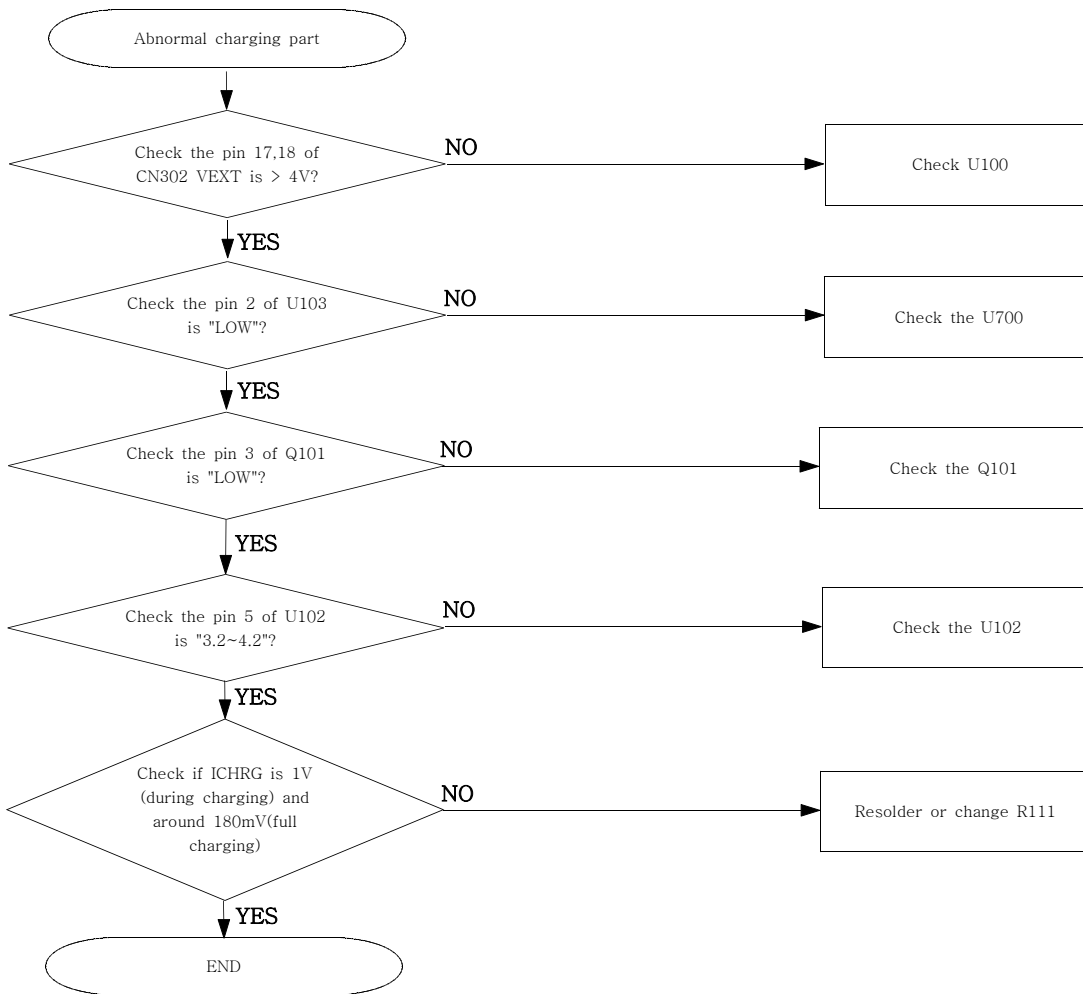
## 2. Initial



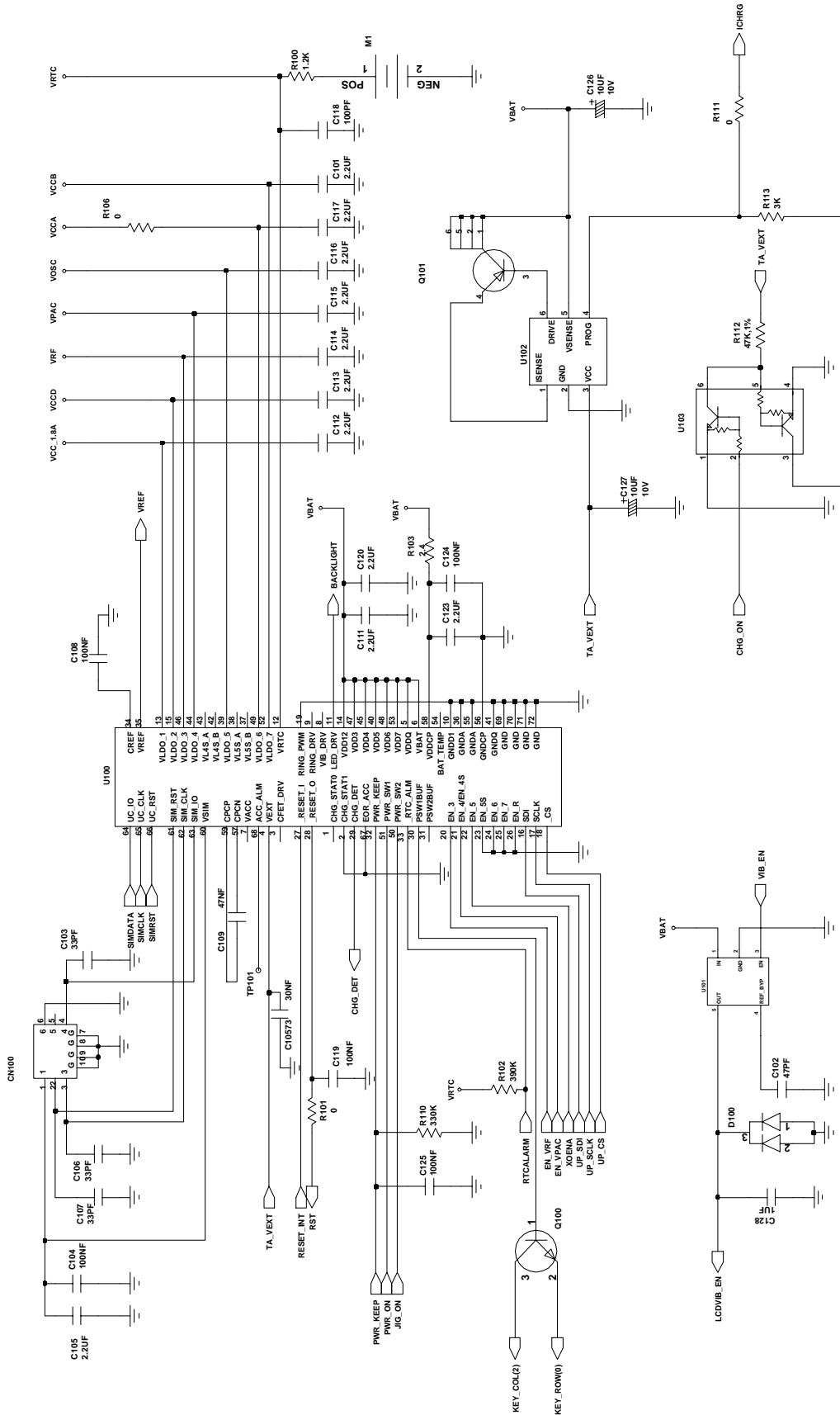
3. Sim Part



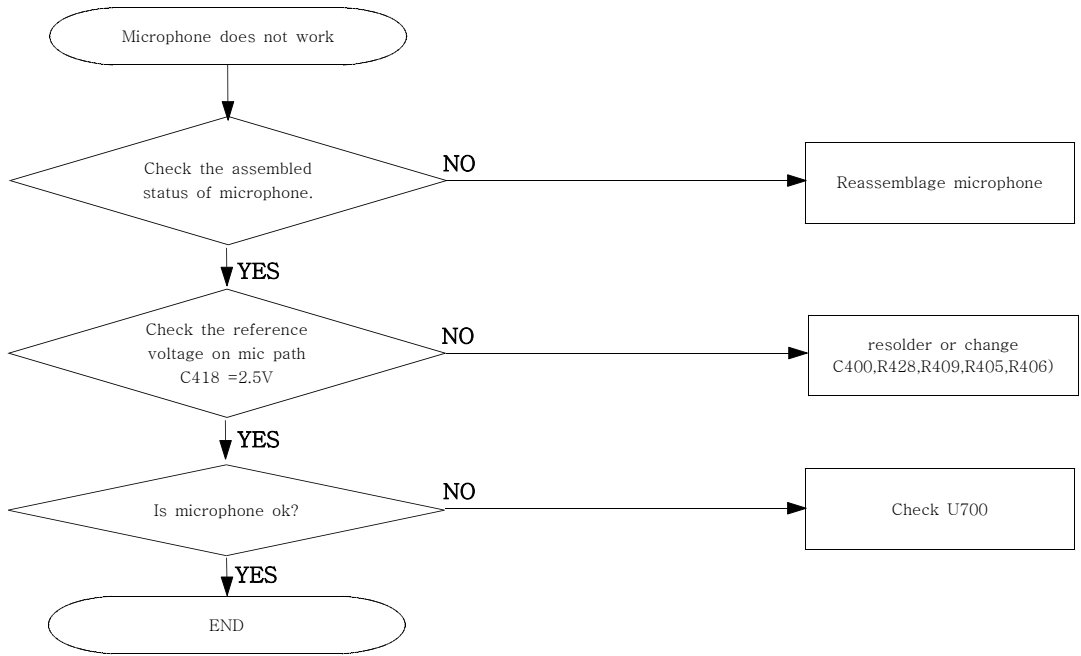
### 4. Charging Part



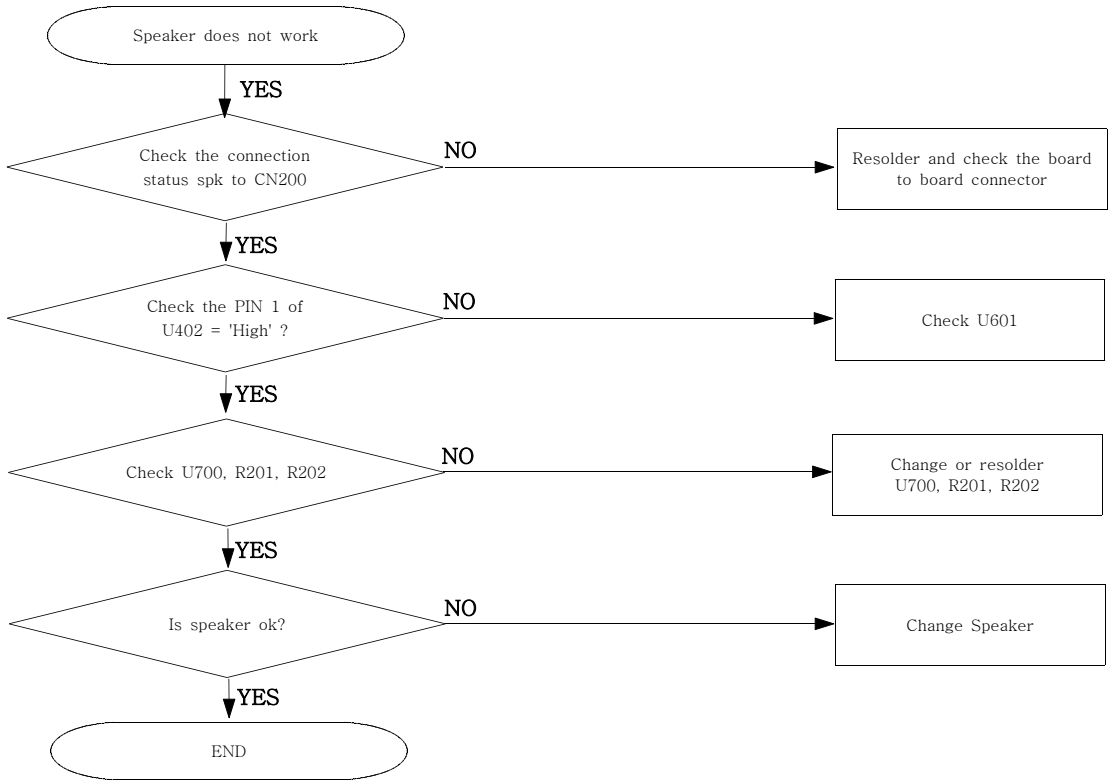


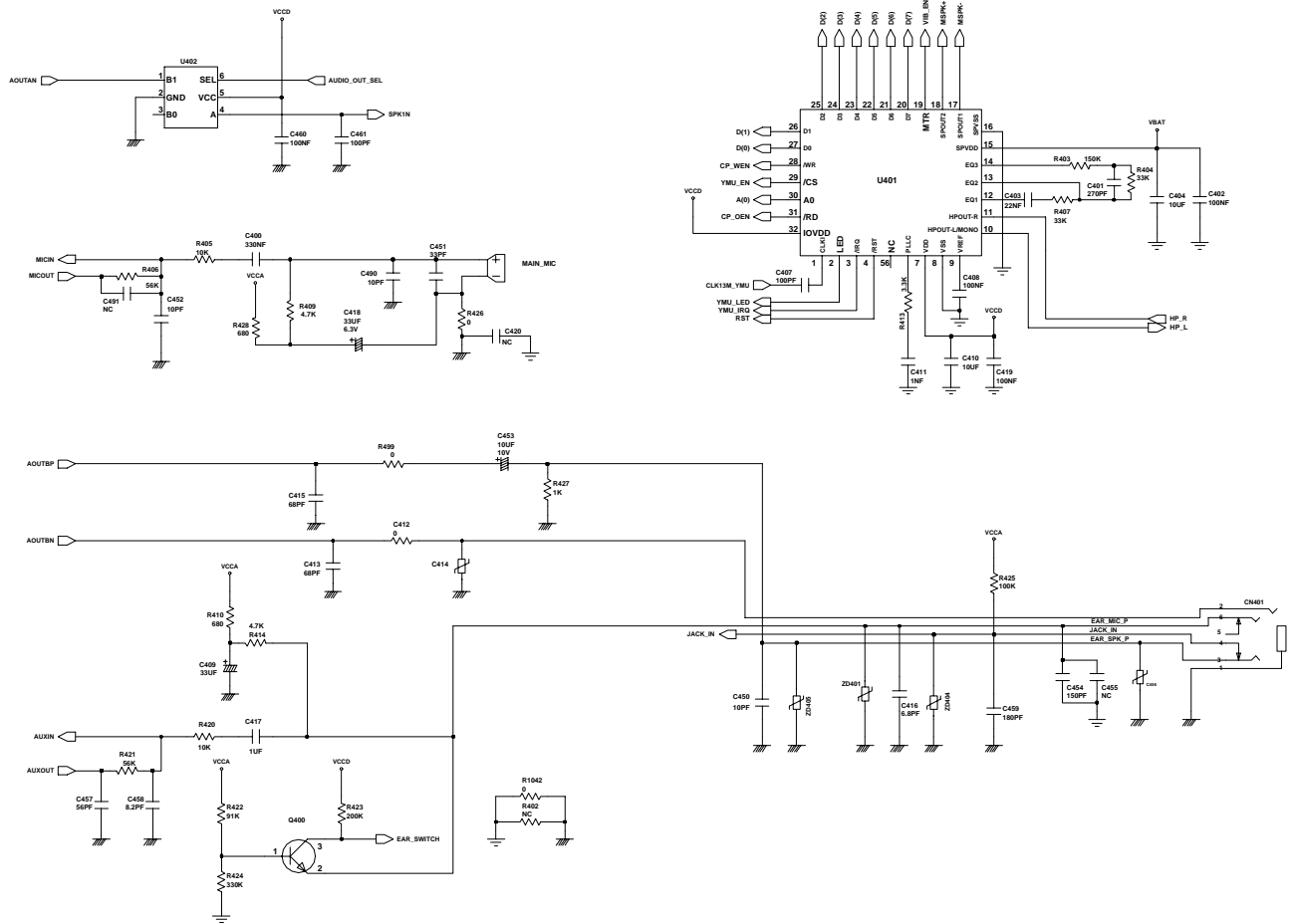


### 5. Microphone Part

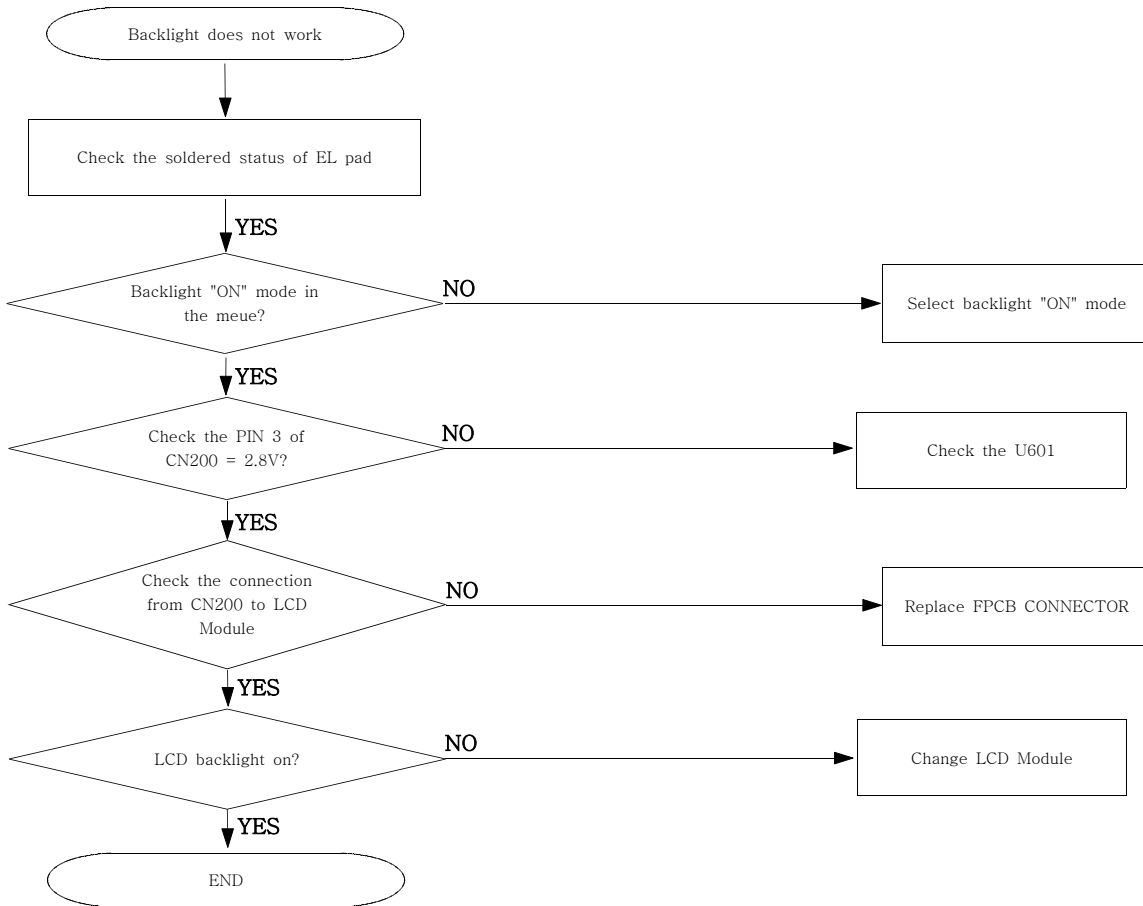


### 6. Speaker Part

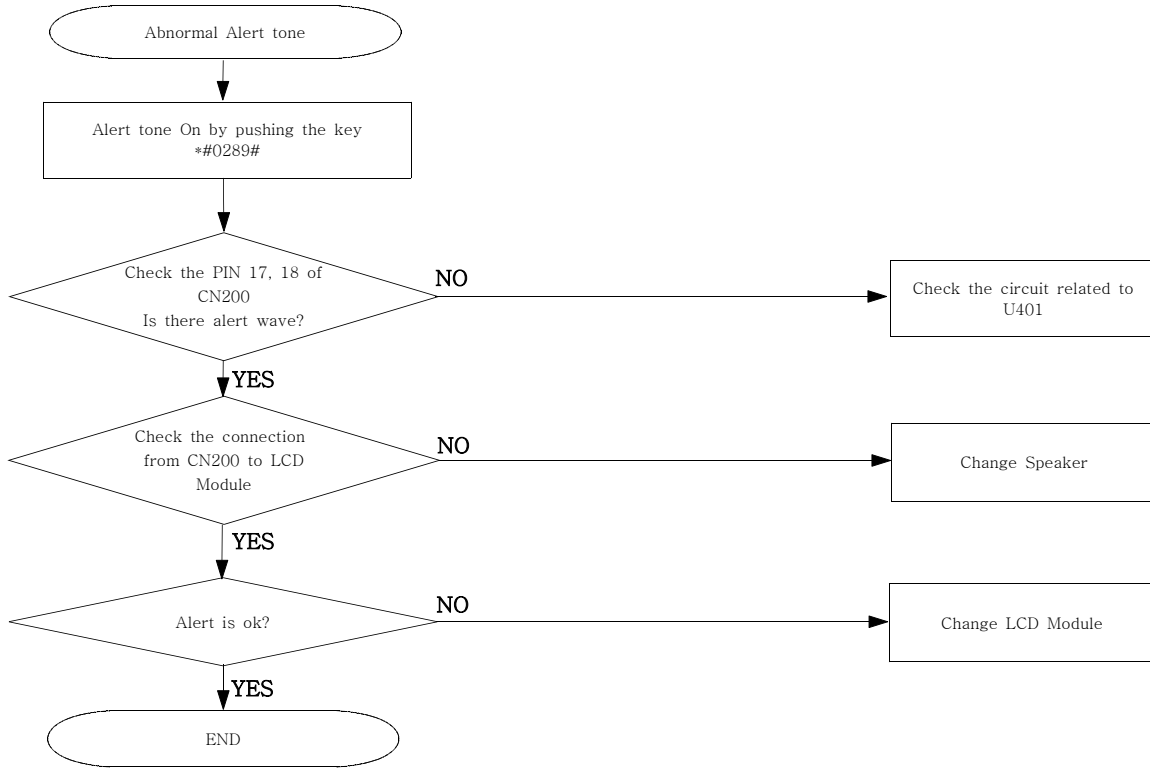




## 7. Back Light

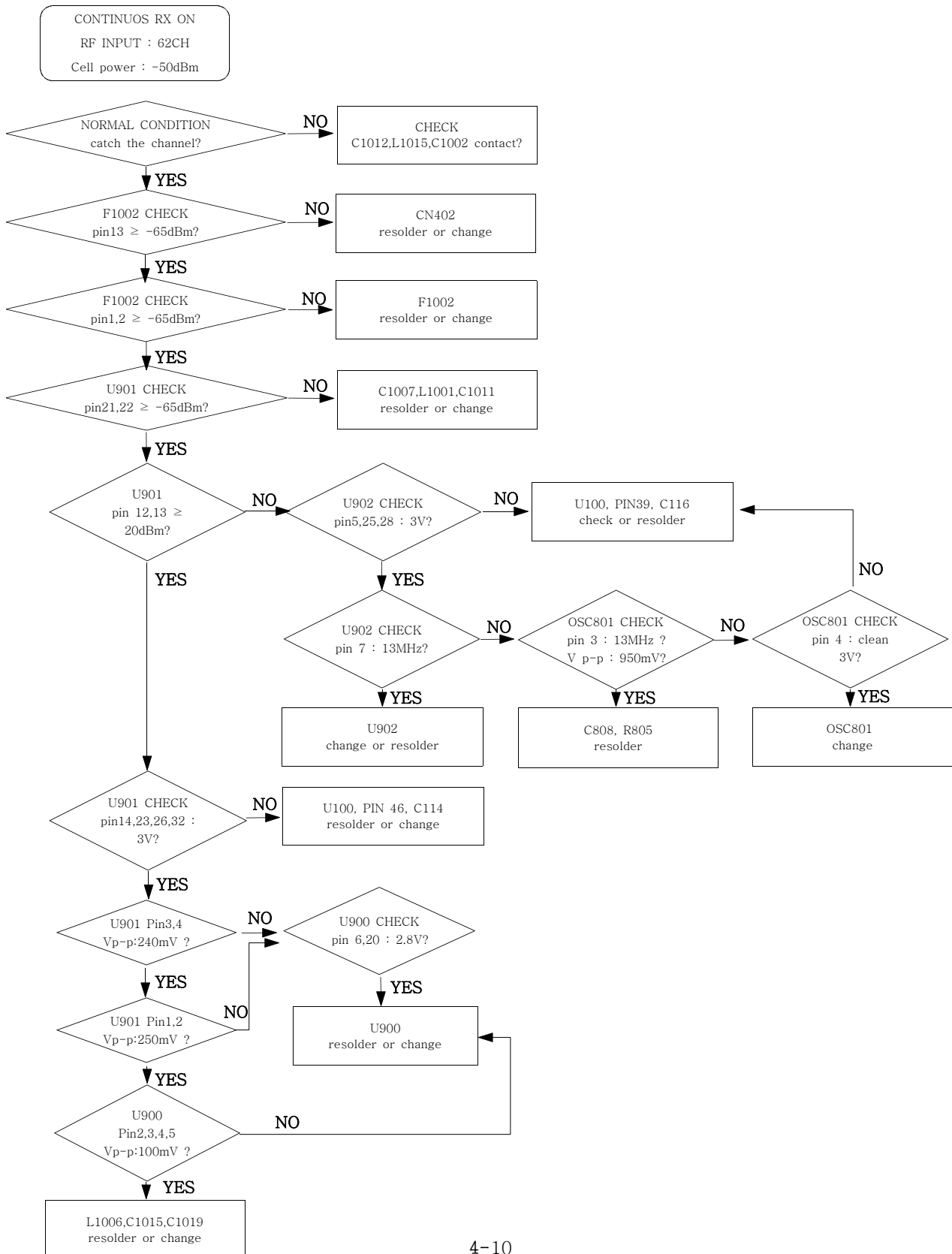


### 8.Alert Tone



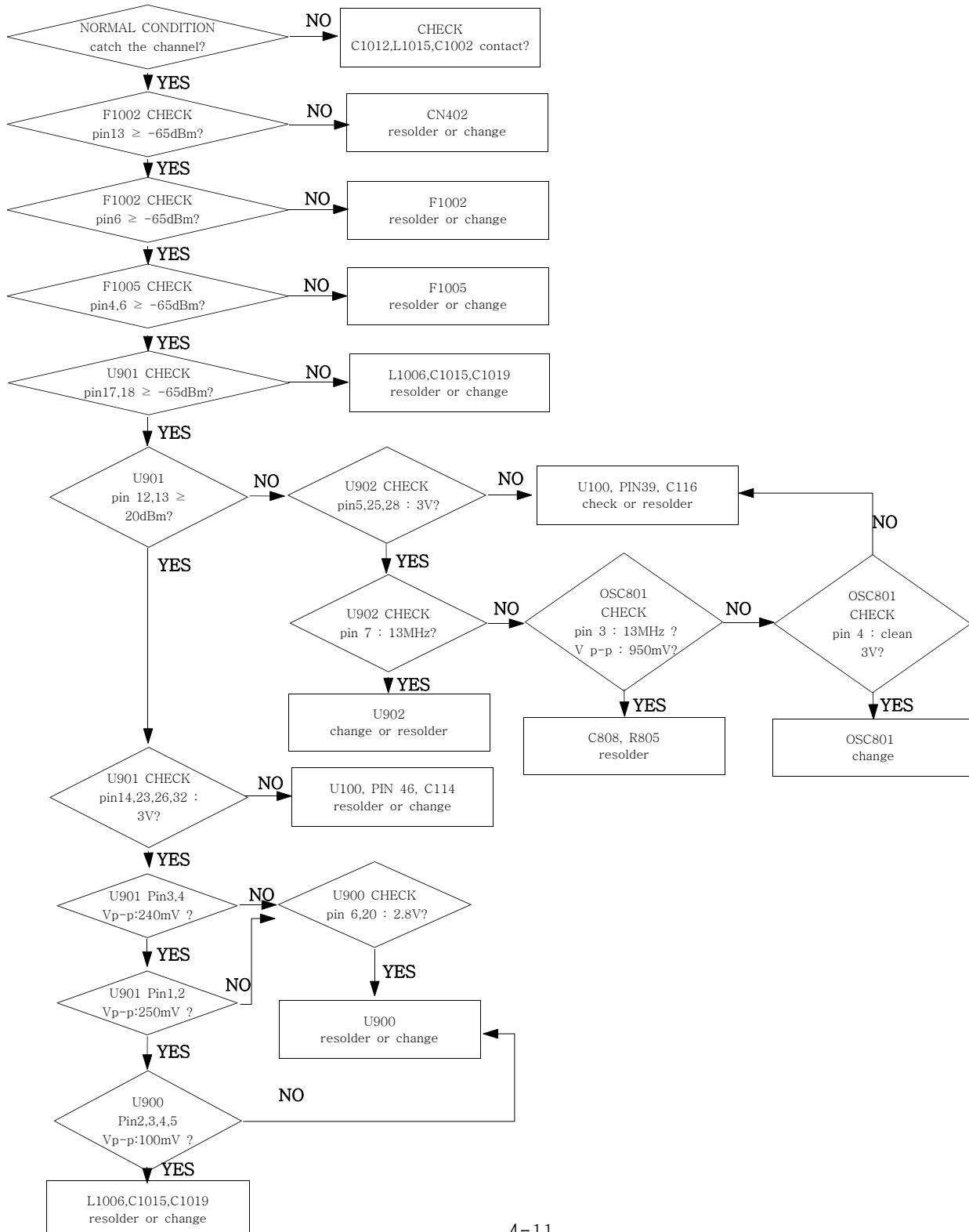
## 2.RF

### 1. GSM Receiver

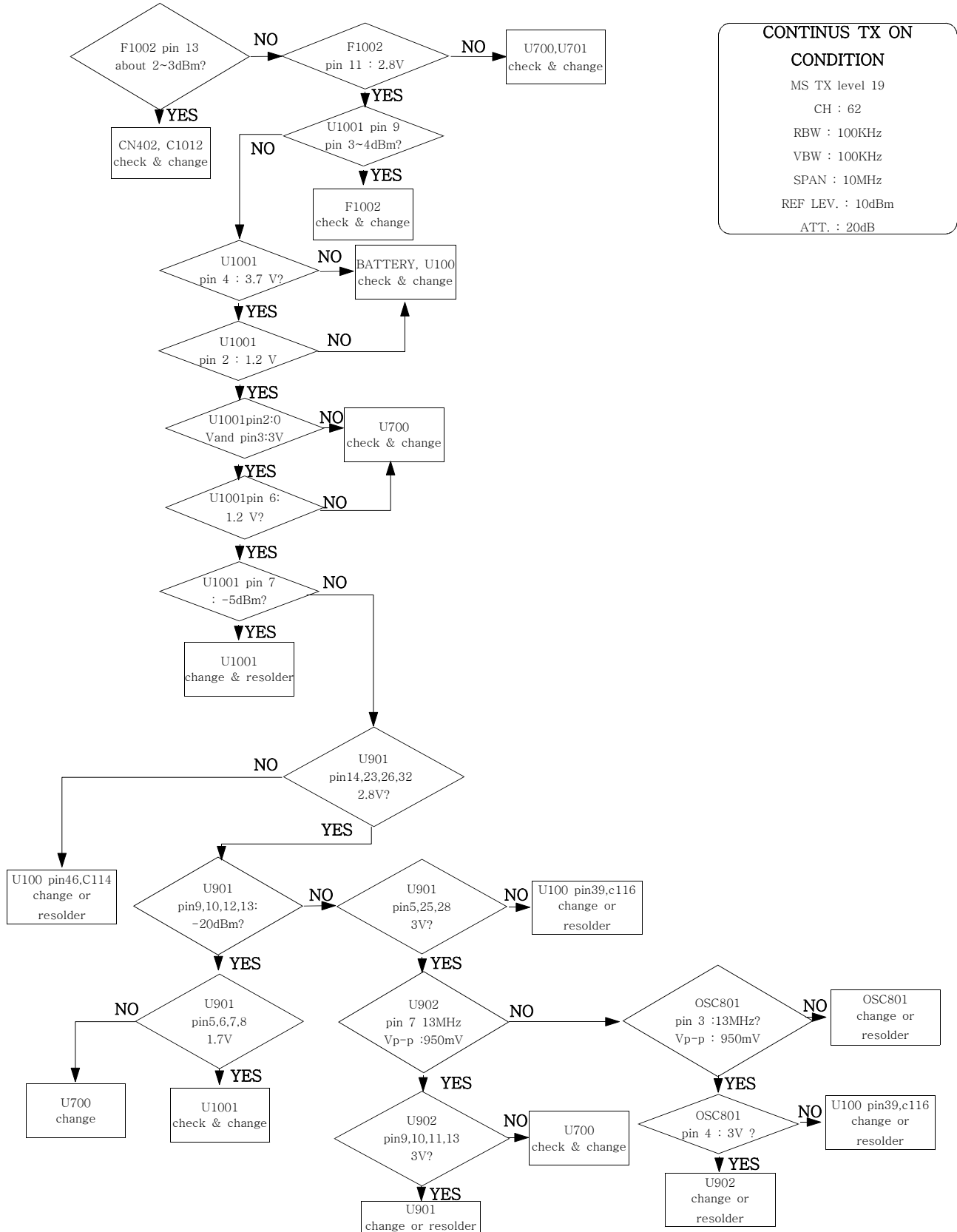


## 2. PCS Receiver

CONTINUOUS RX ON  
RF INPUT : 698CH  
Cell power : -50dBm



### 3. GSM Transmitter



**CONTINUS TX ON**

**CONDITION**

MS TX level 19

CH : 62

RBW : 100KHz

VBW : 100KHz

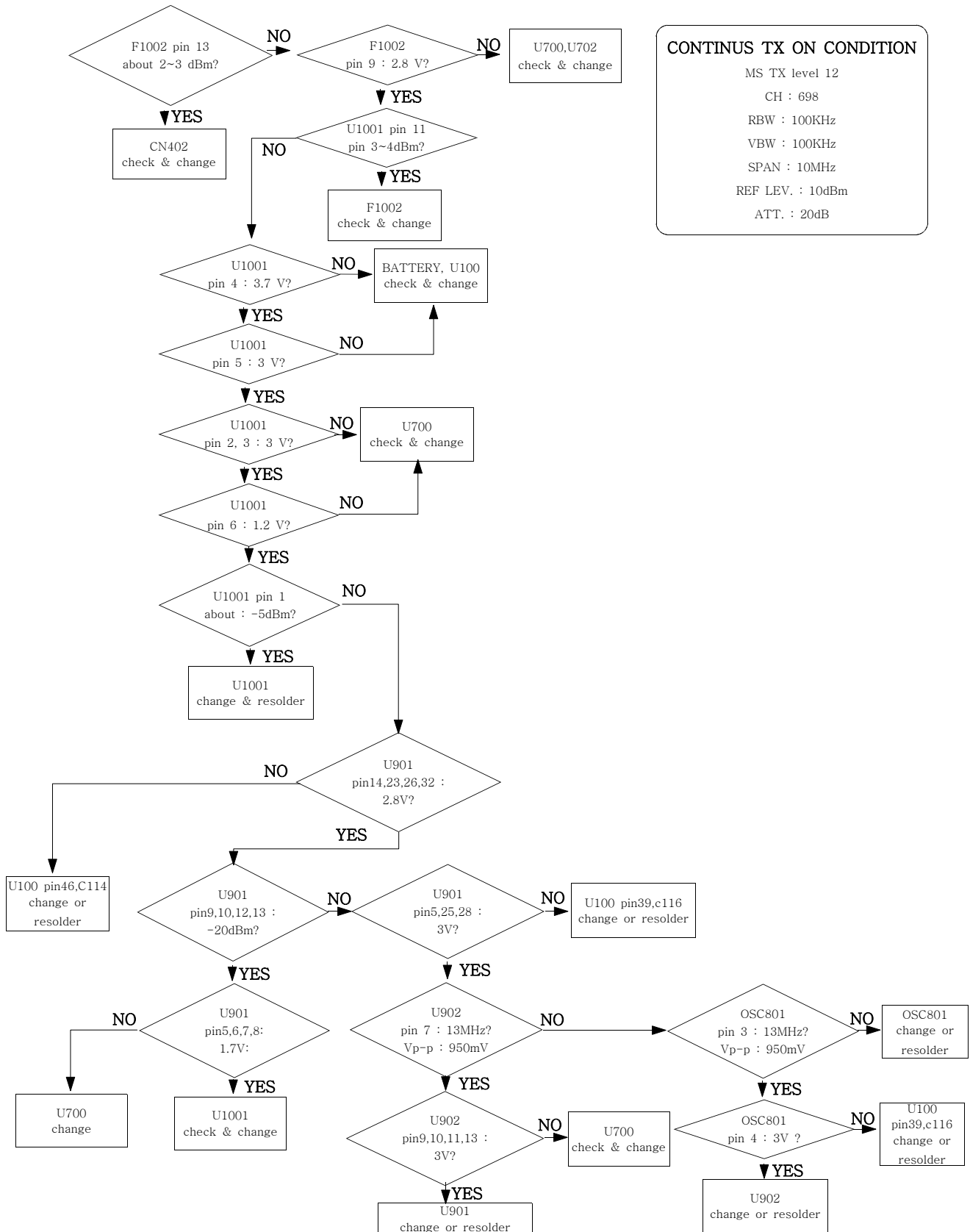
SPAN : 10MHz

REF LEV. : 10dBm

ATT. : 20dB



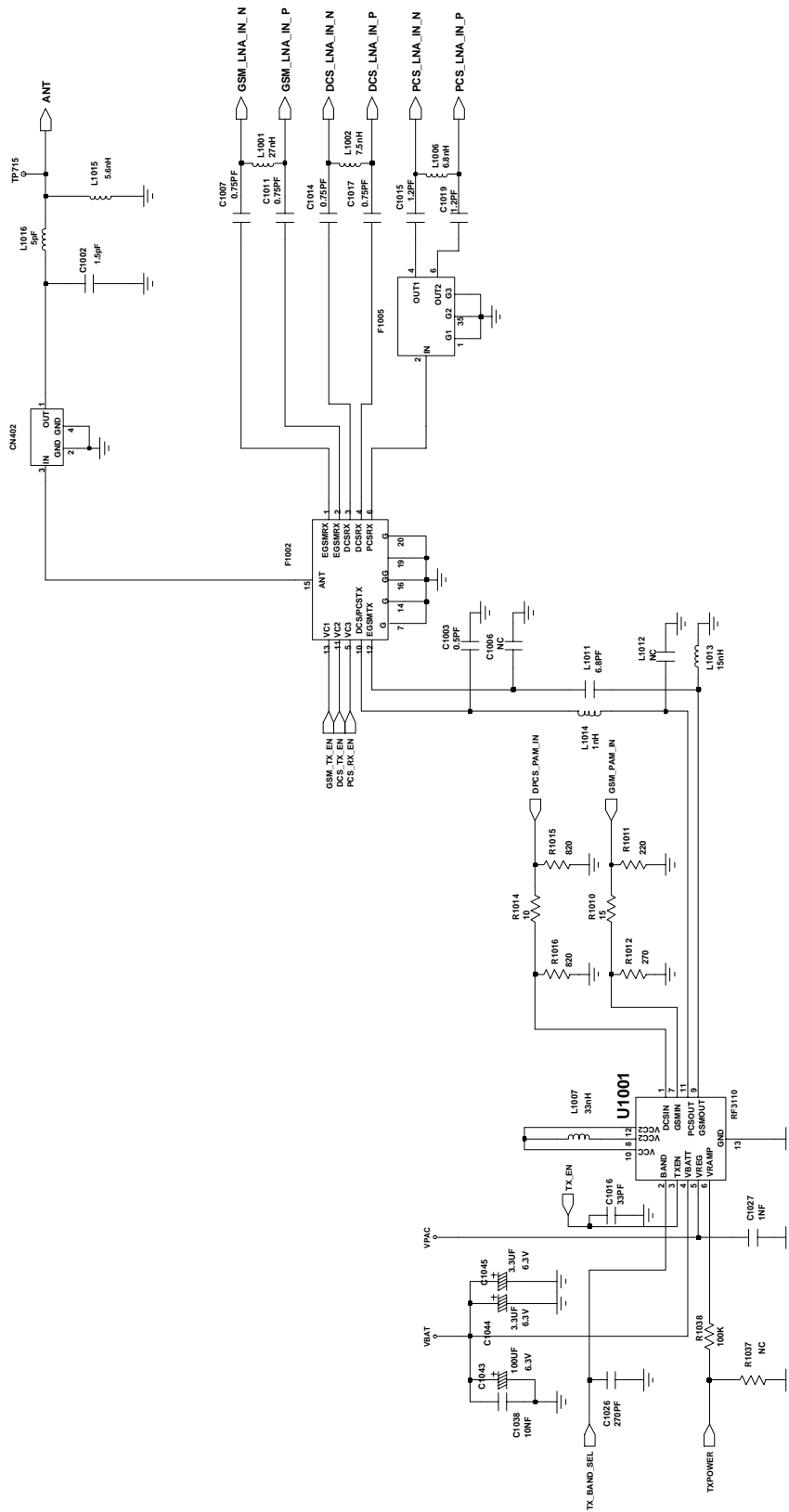
### 4. PCS Transmitter



**CONTINUS TX ON CONDITION**

MS TX level 12  
 CH : 698  
 RBW : 100KHz  
 VBW : 100KHz  
 SPAN : 10MHz  
 REF LEV. : 10dBm  
 ATT. : 20dB







2. Main PCB Bottom Diagram

