



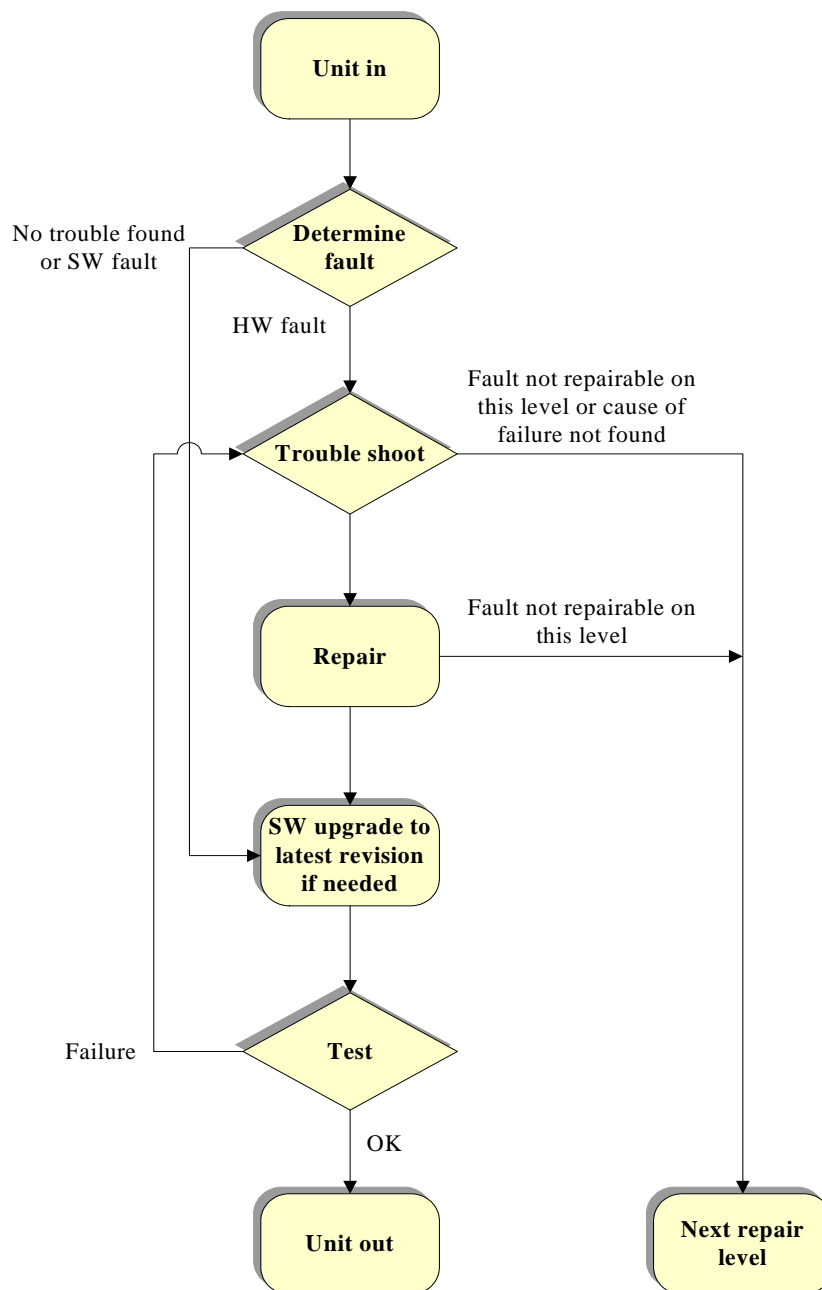
# Process Flow, Electrical

Applicable for K750i / K750c

## Contents

<b>1</b>	<b>Process Flow .....</b>	<b>2</b>
1.1	Process Flow Description .....	3
<b>2</b>	<b>Revision History .....</b>	<b>4</b>

# 1 Process Flow, HVC



## 1.1 Process Flow HVC, Description

Box	Reference
Unit in	Process the phone according to local requirements.
Determine fault	<p>Determine if the phone is faulty or not and if it possible confirm the customer's complaint.</p> <p>If a <b>HW</b> fault is found, or a <b>HW and SW</b> fault is found, continue with <b>Trouble shoot</b>.</p> <p>If only a <b>SW</b> fault is found <b>Software upgrade to latest revision</b>, continue to <b>Test</b>, and <b>Unit out</b>. <b>Report as SW upgrade</b></p> <p>If no <b>HW</b> or <b>SW</b> fault is found, continue to <b>Software upgrade to latest revision</b>; continue to <b>Test</b>, and <b>Unit out</b>. <b>Report as No Trouble Found, NTF</b>.</p>
Trouble shoot	<p><i><b>Trouble Shooting Guide, Mechanical and Electrical</b></i></p> <p>Determine the cause of the failure. Trouble-shoot the phone according to the guide for the most common faults.</p>
Repair	<p><i><b>Working Instruction Mechanical and Electrical</b></i></p> <p>Repair the faulty phone according to the instruction. Replace parts as required. (<i><b>Product Change Survey, Mechanical</b></i>)</p> <p>Flashing the latest software into the phone at this point may "repair" some problems.</p> <p>If a repair that requires calibration has been done, calibrate the unit in SERP.  <i><b>Calibration can only be done by authorized repair locations.</b></i></p>
SW upgrade to latest revision if needed	Control the SW revision in the product, update to latest revision if needed.
Test	<p><i><b>Test Instruction, Electrical</b></i></p> <p>To verify that the phone works, all test actions must be performed.</p>
Unit Out	Process and package the phone according to local requirements.
Next Repair Level	<p>If the cause of the failure cannot be found or is not repairable at this level, the phone can be Scrapped, Swapped or returned to the customer at the customer's request.</p> <p>Scrap: According to local directives</p> <p>Swap: Swap the phone according to the instruction in <i><b>Working Instructions, Swap and Customize</b></i> and according to local directives</p>

## 2 Revision History

Rev.	Date	Changes / Comments
A	2005-05-13	Initial release