

# LOTUS ICS

**One touch 930D**

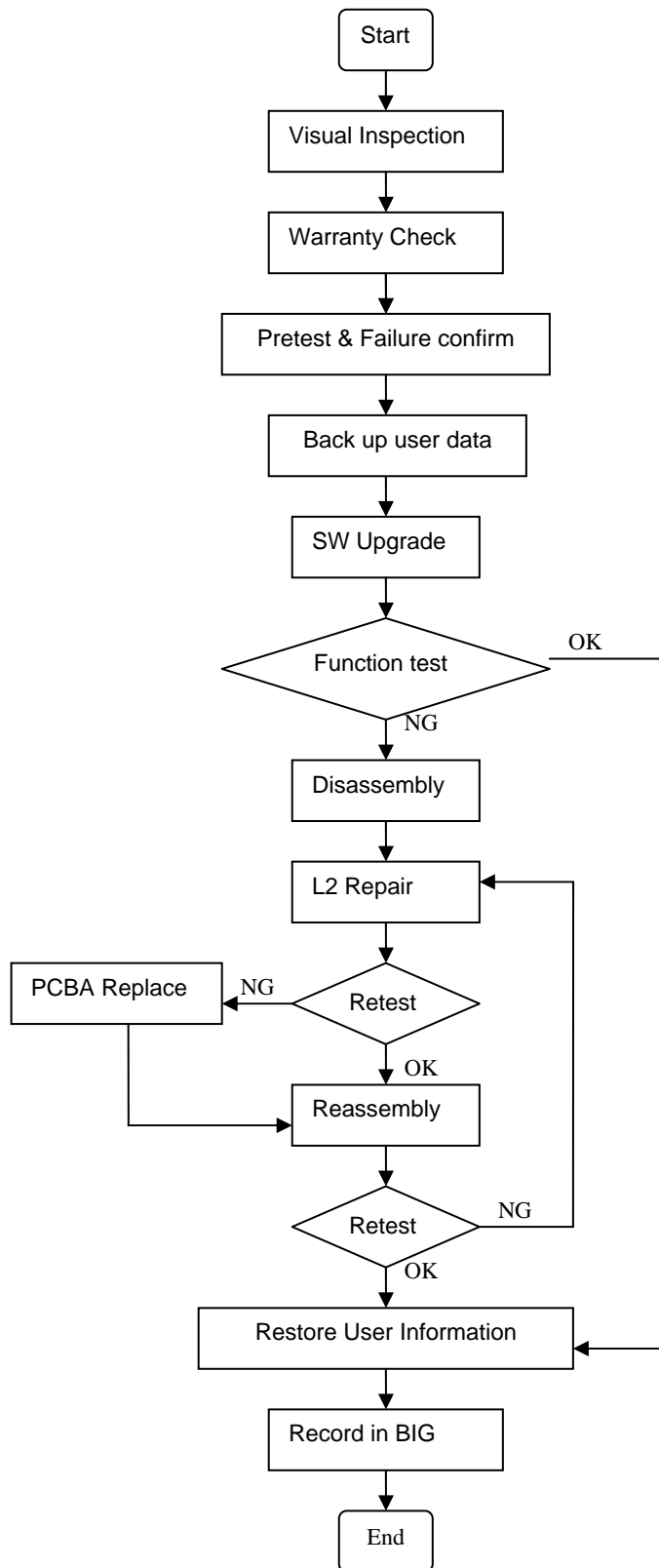


**Note: this manual is non-contractual and TCT Mobile Limited can modify it without prior notice on the characteristics of described equipments.**

Rev.		Page
1.0	one touch 930D Level 2 Repair Document	1/33
All rights reserved. Transfer, copy, use or communication of this file is prohibited without authorization.		

0.1	2012-11-08	Draft creation	Zhenqing		
Rev.	Date	Modification description	Prepared By	Checked By	Approved By

# 1 Level 2 repair process



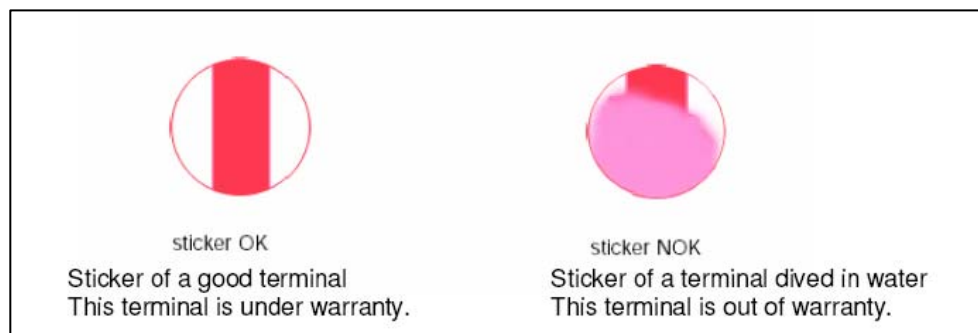
## 2 Warranty Check and Visual Inspection

### 2.1 Warranty confirmation of L1

- 1) IMEI sticker check:
  - a) The IMEI number MUST be the same with the one on the IMEI sticker. If not, it's out of warranty policy
  - b) IMEI label should not be
    - Removed
    - Scratched
    - Unreadable
    - Un-approved or un-provided by Alcatel.



- 2) Humidity sticker: Liquid detection on humidity sticker.



### 2.2 Visual mechanical check

#### Mechanical warranties check items:

- 1) Corrosion

Rev.		Page
1.0	one touch 930D Level 2 Repair Document	5/33
All rights reserved. Transfer, copy, use or communication of this file is prohibited without authorization.		

- Corrosion on the USB connector, SIM connector, and other metal surfaces.
- 2) Hole (diameter > 1mm)
  - Holes on any surface, including the front casing, furnished frame, battery cover, touch Lens, keypad...
- 3) Bump
  - Bumps (diameter > 1mm) on any surface, including front casing, decorate frame, battery cover, touch Lens, keypad, etc.
- 4) Scratch
  - Scratches (length > 3mm) on any surface, including the front casing, decorate frame, battery cover, touch Lens, keypad, etc.
- 5) Distortion
  - Bend, twisted or crushed on the h/s, cover/casing or connectors, etc.
- 6) Broken
  - Touch broken, casing/cover broken, etc.
- 7) Dropped
  - Keypad tear off, touch lens, connectors dropped, etc.
- 8) Gap
  - External physical damage relating to abnormal use, like front case and frame opened
- 9) Others
  - Damage caused by disassembly ,wrong part assembly, loss of components
  - Use in abnormal environment like high temperature causing plastic melts

## 2.3 Pretest

- 1) Check that the SIM card is set correctly.
- 2) Insert the battery.
- 3) Power on the cell phone.
- 4) If the cell phone cannot power on, visually check the condition of the battery connector. Replace it if necessary.
- 5) If the cell phone asks to input NCK code, this means it is SIM locked and can only be worked

Rev.		Page
1.0	one touch 930D Level 2 Repair Document	6/33
All rights reserved. Transfer, copy, use or communication of this file is prohibited without authorization.		

with dedicated SIM card. Use the correct SIM card.

6) Enter the phone code if necessary.

7) After the phone power on, test step by step with the auto test code:

Press \*#1923# in dial screen and select “Auto” to start the auto test, then you will see the interface displaying the version. Press “Pass” to continue.

If one of the test failed, it will ask you “Restart?”, press “YES” to restart the auto test from the first one and “NO” to exit the auto test, while “NEXT” to continue the auto test.

■ **TRACABILITY Test**

I. You can get some information such as IMEI, CU, BT, WIFI, etc...

II. Press “Pass” to continue.

■ **TP**

I. “Please draw the yellow data” according to instructions and it will show “TEST RESULT: OK!”

II. Press “PASS” to continue.

■ **LCD MIRE/BLACK/GREYCHART/WHITE**

I. You will see the LCD color changes if it functions well

II. Press “Pass” to continue.

■ **LCD BackLight Level**

I. The screen backlight will be flashing if it functions well.

II. Press “Pass” to continue.

■ **KEYPAD.**

I. Press the key displayed on the screen. The key on the screen will disappear when you press it if it functions well

II. Press “Pass” to continue;

■ **Flash LED Light Test.**

I. The light near the camera will flashing.

Rev.		Page
1.0	one touch 930D Level 2 Repair Document	7/33
All rights reserved. Transfer, copy, use or communication of this file is prohibited without authorization.		

II. Press “Pass” to continue.

■ CAMERA IMG

Press “Pass” to continue if the camera functions well

■ CAMERA IMG FRONT

Press “Pass” to continue if front camera functions well

■ CAMERA LED

I. Camera LED will be turned on if functions well.

II. Press “Pass” to continue.

■ MELODY

I. You will hear the melody if it functions well.

II. Press “Pass” to continue.

■ HEADSET

I. Insert the headset and you will hear FM if functions well

II. Press "Pass" to continue

III. Remove headset according the instruction and it will say “Headset tested” if it functions well;

IV. Press “Pass” to continue

■ USB

I. Insert USB cable and the phone will detect “Charger: OK” “USB: OK” if it functions well

II. Remove USB cable according to the instruction and then press "Pass" to continue

■ VIBRATOR

I. You can feel the phone’s vibrating if it functions well.

II. Press “Pass” to continue.

■ G-SENSOR

Rev.		Page
1.0	one touch 930D Level 2 Repair Document	8/33
All rights reserved. Transfer, copy, use or communication of this file is prohibited without authorization.		

- I. Screen will display “put the handset up and towards up”, follow this prompt screen will display left arrow, right arrow, up arrow, down arrow and face down arrow. Put the phone to the positions according to the arrows’ direction. It will say “all positions checked” if functions well
  - II. Press “Pass” to continue
- ALS/PS
- III. It will say “Proximity Sensor detected”, put the phone near your skin and then move away from your skin. values such as “near->far:2” will be shown if functions well;
  - IV. Press “Pass” to continue
- SIM
- I. Insert the SIM card and the phone will detect it if it functions well
  - II. Press “Pass” to continue
- MEMORY CARD
- III. Insert the Memory card and the phone will detect it if it functions well
  - IV. Press “Pass” to continue
- a) BT
- V. The phone will running the BT and show the BT address on screen
  - VI. Press "Pass" to continue
- b) WIFI
- I. The phone will running the WIFI and search available network
  - II. Press "Pass" to continue
- c) GPS
- III. The phone will running the GPS and search satellite
  - IV. Press "Pass" to continue
- BATTERY TEMP

Rev.		Page
1.0	one touch 930D Level 2 Repair Document	9/33
All rights reserved. Transfer, copy, use or communication of this file is prohibited without authorization.		



- I. Battery temperature will be displayed on the screen
- II. Press “Pass” to continue
- CALL
  - I. You will hear a voice prompt which introduces some emergency call numbers if functions well;
  - II. Press “Pass” to continue

### 3 Software download

It is authorized to download software for the handset which needs to be updated. This downloading tool is called SW upgrade tool. Handset Software can be downloaded from TS website via it. Thus internet access is necessary.

TS Website: <https://css.tclmobile.cn/>.

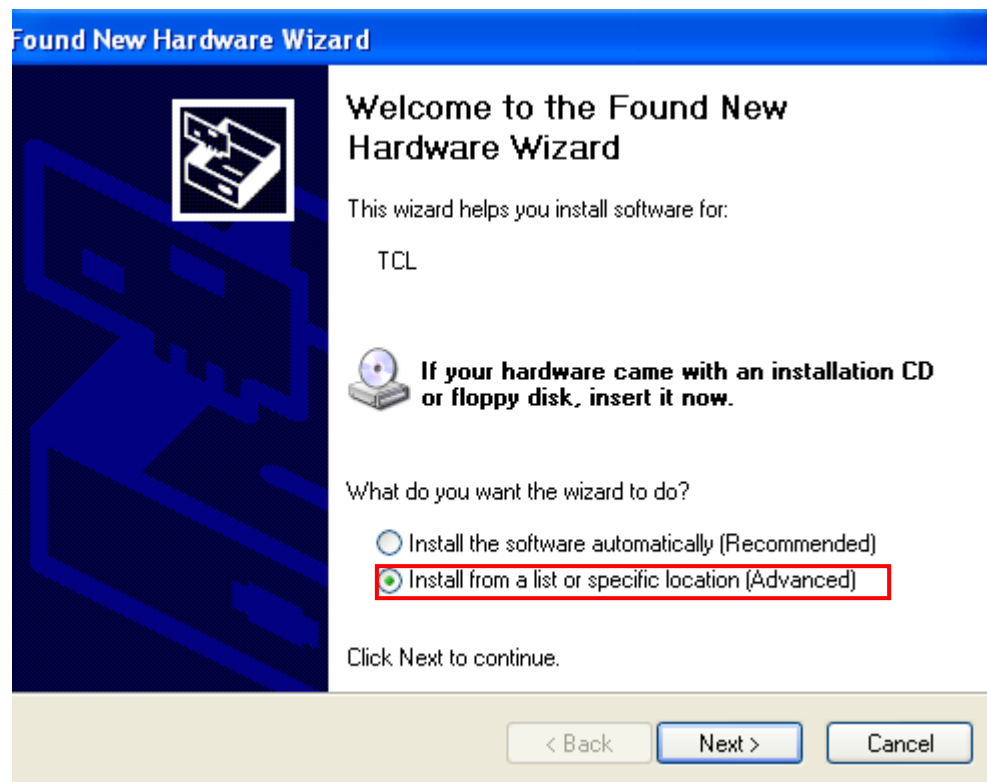
### Equipments requested when download:

- (1) A handset with full charged battery;
- (2) PC with windows system;
- (3) A USB cable.

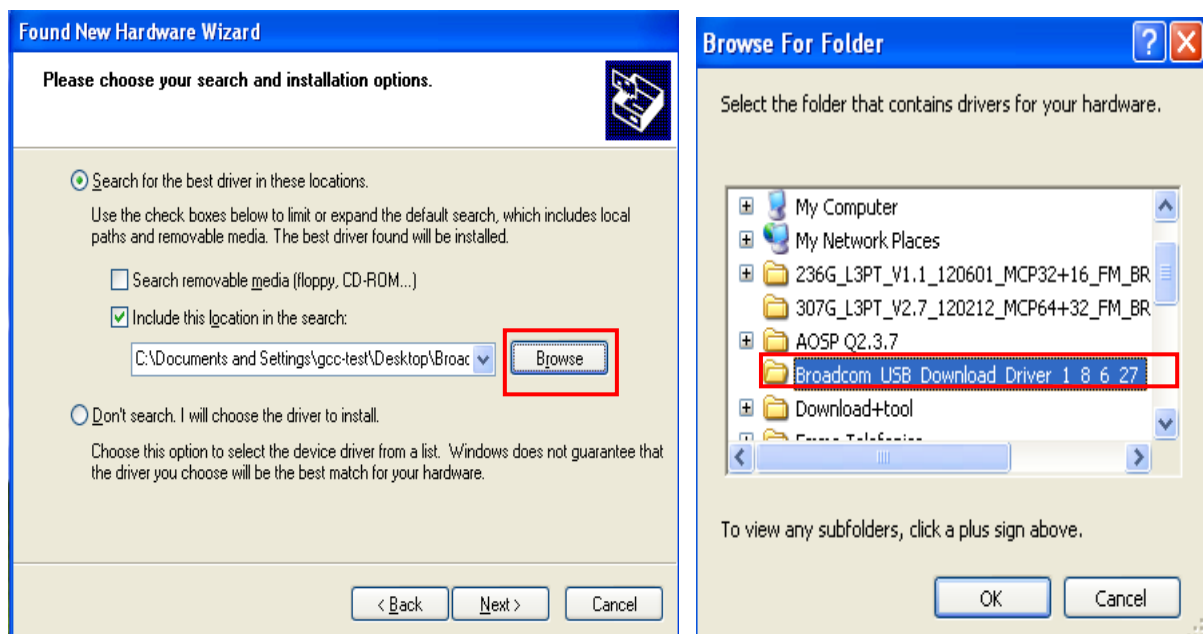
### Handset driver installation

- I . Download the driver package from the CSS website
- II . Power off the handset and connect to PC via end user cable. PC will detect the handset and prompt a window to install the driver
- III. Select “Install from a list of specific location (Advanced)”, then select “Next”

Rev.		Page
1.0	one touch 930D Level 2 Repair Document	10/33
All rights reserved. Transfer, copy, use or communication of this file is prohibited without authorization.		

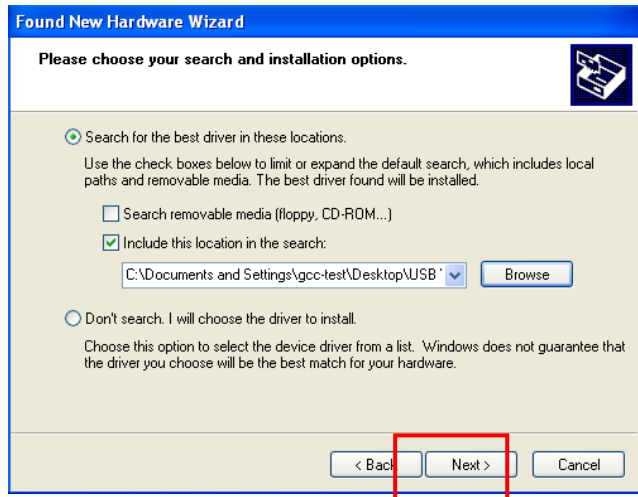


IV. Select “Browse” to choose the exact path where the driver package stored.

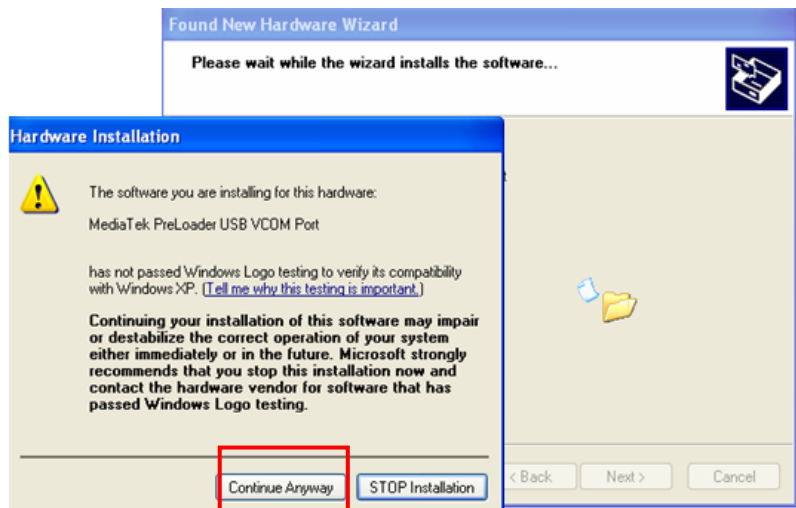


V. After location selected, please select “Next”

Rev.		Page
1.0	one touch 930D Level 2 Repair Document	11/33
All rights reserved. Transfer, copy, use or communication of this file is prohibited without authorization.		

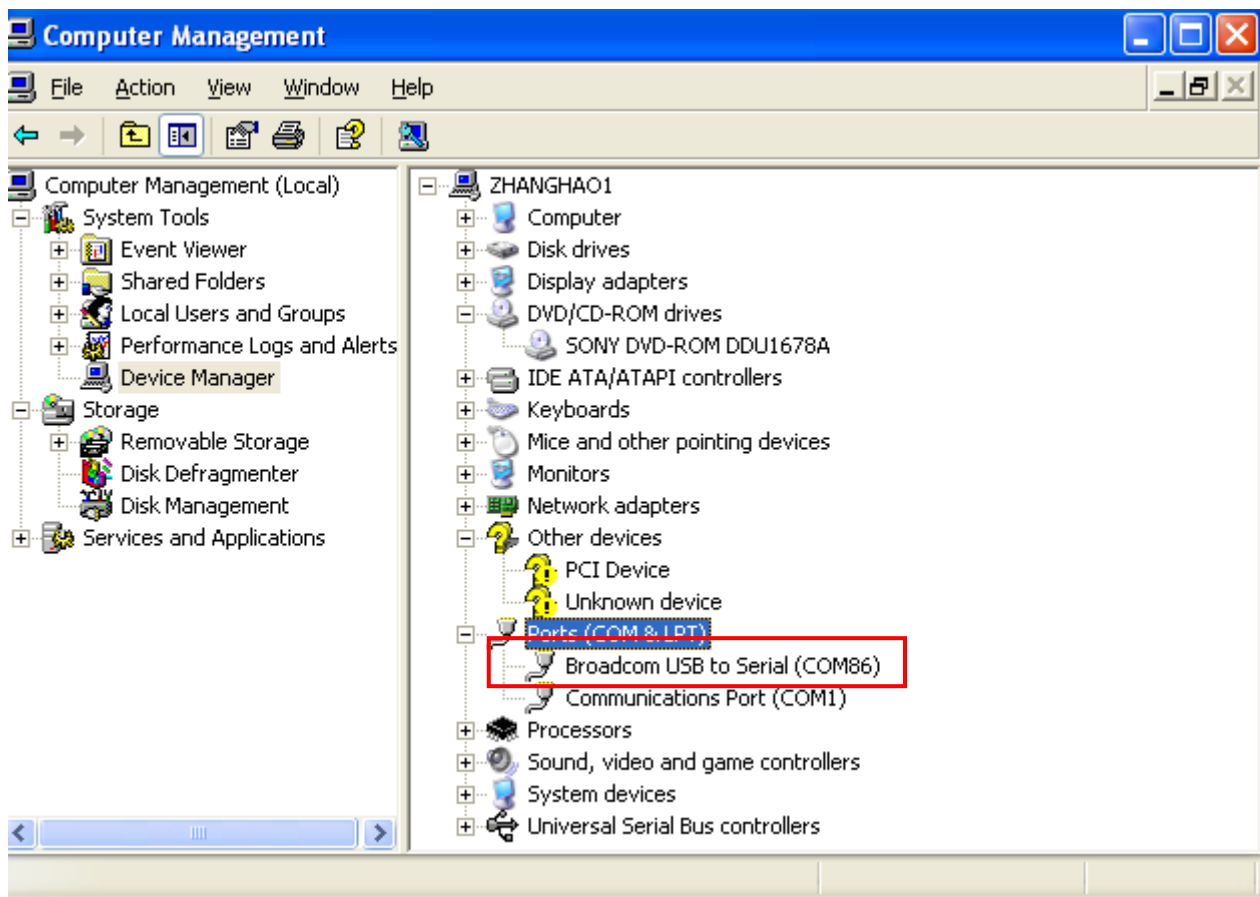


VI.Select “Continue Anyway”.



VII. Select “Finish”.

VIII. After driver installed, it can be checked on Device Manager. The driver is “Broadcom USB to Serial(COM86)”



## The upgrade process is as below:

I . Open SoftwareUpgrade BO 2.0.0 (you can get the latest version from TS website: <https://css.tclmobile.cn/>). Then input ‘User name’ and ‘Password’ and log on. “SoftwareUpgrade BO 2.0.0” login window looks like follow picture.

Rev.		Page
1.0	one touch 930D Level 2 Repair Document	13/33
All rights reserved. Transfer, copy, use or communication of this file is prohibited without authorization.		



Plastic Flake



Tweezers



Hot wind gun



Screwdriver



Soldering iron

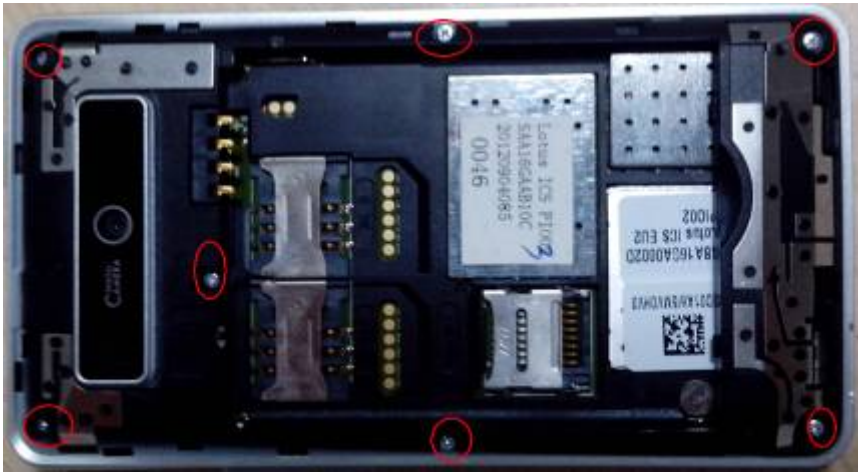


Camera Jig

### 4.3 Disassembly process

The steps of disassembly one touch 930D are as below.  
This module should only be disassembled from bottom to top.

- Step 1: Remove the battery cover and battery.
- Step 2: Take off the 7 screws from the furnished frame by screw driver

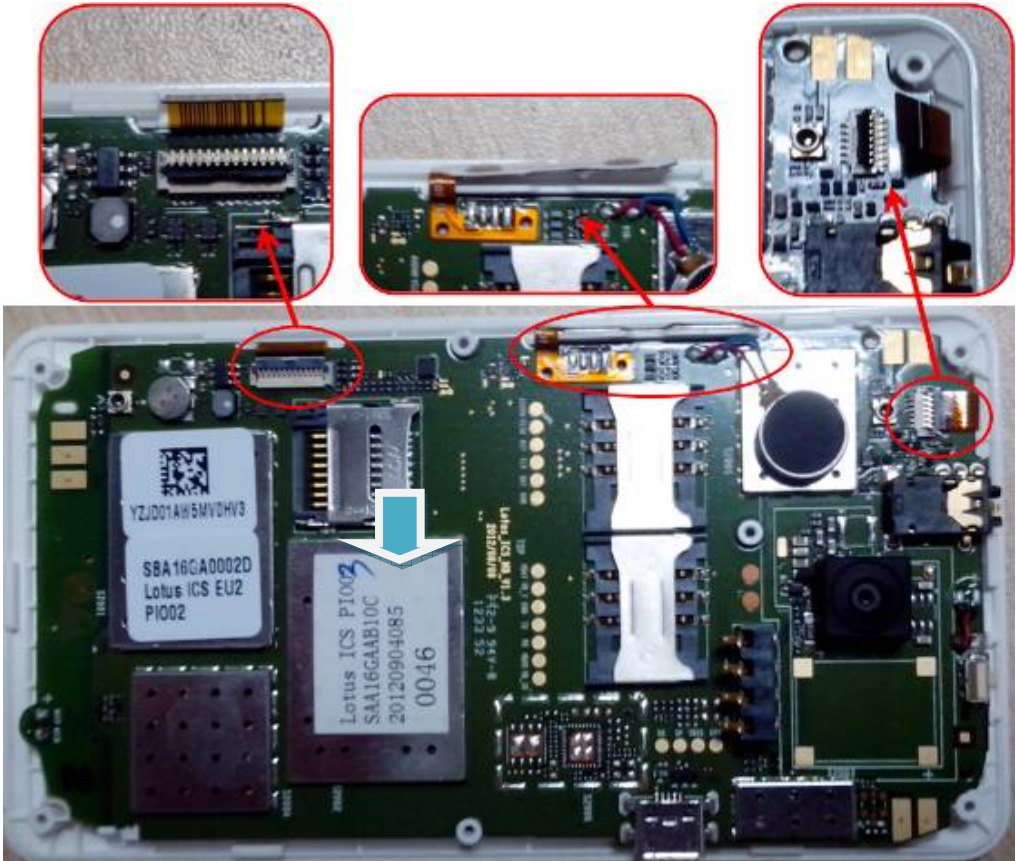


Step 3: Separate the furnished frame from furnished front casing by using plastic flake (NOTE: the location of side key、LCD and touch lens FPC as below picture shows)





Step 3: Disconnect the connection everywhere as below picture shows



BY NCK TEAM

L2 Repair Document

TCT

Mobile Limited

Step 4.remove the main PCBA



Step 5: Remove the receiver and motor by using soldering iron (Temperature: Lead-free technology 330°C ±10°C, time: 2~3 seconds)



Rev.		Page
1.0	one touch 930D Level 2 Repair Document	19/33
All rights reserved. Transfer, copy, use or communication of this file is prohibited without authorization.		



Step6: Remove volume key FPC



Step 7: Seperate touch lens and LCD module from furnished front casing by hot wind gun.

- 1). Please use hot wind gun to heat up touch lens around the four edges (Temperature: 100℃, Air Level: 3, Height:5-10mm, Time:<60s)



Use plastic flake to pry the touch lens starting from top- left corner of the touch lens, then swipe along the four edges to seperate TP from LCD module; be careful not to damage the touch lens FPC.



Rev.	one touch 930D Level 2 Repair Document	Page
1.0		20/33
All rights reserved. Transfer, copy, use or communication of this file is prohibited without authorization.		



2). Please use hot wind gun to heat up LCD module around the four edges (Temperature: 100℃, Air Level: 3, Height:5-10mm, Time:<60s), then swipe along the four edges of LCD model and seperate it from furnished front casing slowly and carefully.



Step 8: Disassembly complete.



### Disassembly Notice:

Put all the spare parts on right position (don't let all spare parts mixed and put on the clean place to avoid vitiated or stained for each spare part) after disassembly. When taking apart of LCD module, take care not to dirty or damage it.

## 4.4 Reassembly Process

Please make reference to the disassembly process for assembly reverse an order of the disassembly steps.

Attention: Insert main FPC and assembly main PCBA with furnished keypad casing, lock the main FPC connector to PCBA connector, and then place the volume key, Assembly the furnished frame. Note the orientations of the main FPC.

## 4.5 Disassembly process evaluation

We list the one touch 930D parts disassembly time, technique levels and disassembly methods as below, for technique levels, Class 1 signifies easy to disassembly, Class 2 signifies normal to disassembly and Class 3 signifies hard to disassembly.

Spare part	Time for disassembly	Jigs for disassembly	Difficulty Class	Remark
battery cover	3s	Plastic Flake	Class 1	
Furnished casing with screws	20s	screwdriver	Class 1	
Main PCBA	20s	Plastic Flake	Class 1	
Volume key	3S	Tweezers	Class 1	
Speaker	3s	Tweezers	Class 1	
Main Camera	5s	Plastic flake	Class 1	
volume keypad FPC	15s	Soldering iron	Class 2	
Power key FPC	15S	Soldering iron	Class 2	
Receiver	3s	Tweezers	Class 1	
RF cable	3s	Tweezers	Class 1	
Sub PCBA	10s	Plastic flake	Class 1	
Touch lens	300s	Hot wind gun Plastic Flake	Class 3	Be careful for touch lens & FPC damage
LCD Module	60s	Hot wind gun Plastic Flake	Class 3	Be careful for LCD FPC damage
BTB connector socket	60s	Hot wind gun Tweezers	Class3	The connector is easy to be damaged

Rev.		Page
1.0	one touch 930D Level 2 Repair Document	22/33
All rights reserved. Transfer, copy, use or communication of this file is prohibited without authorization.		

# BY NCK TEAM

## L2 Repair Document

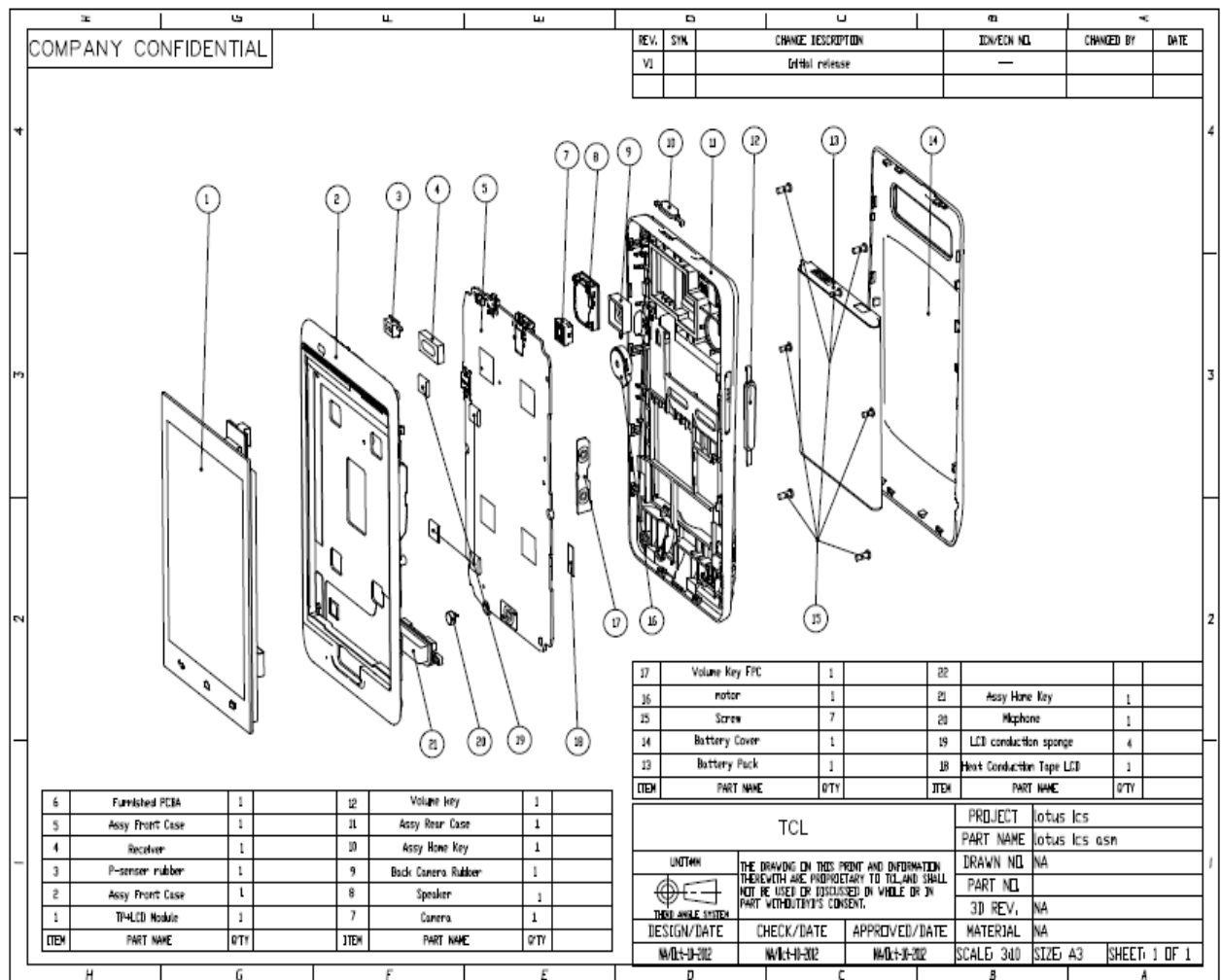
# TCT

Mobile Limited

USB connector	60s	Hot wind gun Tweezers	Class3	The connector is easy to be damaged
SIM card connector	120s	Hot wind gun Tweezers	Class 3	The connector is easy to be damaged
T flash connector	120s	Hot wind gun Tweezers	Class 3	The connector is easy to be damaged
Battery connector	40s	Hot wind gun Tweezers	Class3	The connector is easy to be damaged

## 5 Disassembly Complete

### ➤ Explored view



Rev.	Page
1.0	23/33
one touch 930D Level 2 Repair Document	
All rights reserved. Transfer, copy, use or communication of this file is prohibited without authorization.	

# BY NCK TEAM

## L2 Repair Document

# TCT

Mobile Limited

➤ Below table lists one touch 930D L2 spare parts.

assy case front	BCA16GAB11C0	1	assy case front, Lotus ICS, 素材白色, 喷涂白色 UV 漆, +热熔 p-senser 导光柱, +装饰件, 劲胜
assy case front	BCA16GAA11C0		前壳组件, assy case front, Lotus ICS, 素材黑色, 喷涂黑色 UV 漆, +热熔 p-senser 导光柱, +装饰件, 劲胜
LCD + Touch Panel	AUC350T100C1	1	LCD+触摸屏, LCD + Touch Panel, 16M, 3.5", 320×480, TFT-TN, Narrow View, MIPI, ZIF 13pin, ILI9486, BLACK, CSZMDS9576, TRULY
LCD tape	BPA16GA006C0	1	主屏双面胶, LCD tape, Lotus ICS, 54.43*84.4*0.3t, tesa 62946, 福万方
TP lens tape	BPA16GA002C0	1	触摸屏镜片双面胶, TP lens tape, Lotus ics, 56*2.7*0.3t, tesa 62946, 福万方
TP film tape	BPA16GA003C0	1	触摸屏菲林双面胶, TP film tape, Lotus ics, 56*89*0.3t, tesa62946, 福万方
TP protective film	BNH16GA001C0	1	TP 保护膜, TP protective film, Lotus ICS, 56*89*0.1t, tesa4982, 福万方
assy case rear	BCC16GAV31C0	1	主底组件, assy case rear, Lotus ICS, 素材黑色, NCVN 亮面浅青色, +GPS 天线, BT/WIFI 天线, SPEED
assy case rear	BCC16GAV21C0		主底组件, assy case rear, Lotus ICS, 素材黑色, NCVN 亮面深青色, +GPS 天线, BT/WIFI 天线, SPEED
Volume key	BFC16GAV21C1	1	音量键, Volume key, Lotus ICS, 双料, NCVN 亮面深青色, SINCO
Volume key	BFC16GAV31C1		音量键, Volume key, Lotus ICS, 双料, NCVN 亮面浅青色, SINCO
Power key	BFC16GAV32C1	1	开关机键, Power key, Lotus ICS, 双料, NCVN 亮面浅青色, SINCO
Power key	BFC16GAV22C1		开关机键, Power key, Lotus ICS, 双料, NCVN 亮面深青色, SINCO
Volume FPC	SBF16GA0011B	1	音量键 FPC 组件, Volume FPC, LOTUS ICS, B Version, 2Layer, N/A, With Glue, 7.00×26.00mm, 带两个贴片 dome, 带钢片, AKM
Camera	ASA2001077C1	1	内置摄像头, Camera, CMOS, 2M, FF, 6.5×6.5×4.0 mm, SOCKET, MIPI, HYNIX 256, XY-2006AQ, N/A, HM5415B1S-OP0J0, E-WELLY
Screw	BMA1435252C0	7	螺钉, Screw, PB(Self-tapping), PB1.4×0.45P×L3.5mm, Round Head, HD=Φ2.5×T0.5mm, + type, +1.4P1, Without Nylok, SWCH18A, HV 350--550, Plating White ZN, N/A, SEOUL
Receiver	AWB1206L01C1	1	受话器, Receiver, 12×6×2.8mm, 110±3dB, 12 mW, Wire, With Foam&mesh, W/O Mayler, Narrow Frequency Range, No HAC, N/A, MRFD1206A531021, LIANCHUANG

Rev.		Page
1.0	one touch 930D Level 2 Repair Document	24/33
All rights reserved. Transfer, copy, use or communication of this file is prohibited without authorization.		

# BY NCK TEAM

## L2 Repair Document

# TCT

Mobile Limited

Speaker	AWA1115S05C1	1	喇叭, Speaker, Rectangular, 11×15×WH3.9mm, 83.5±3dB, 500.0 mW, spring, with foam, w/o mesh&mayler, N/A, DMSP1115KJ-10-F11-G, AAC
Battery connector	ARE0040020C1	1	电池连接器, battery connector, Over PCB, 4.0 PINs, 3.1 mm, 12.4x4.3xH5.4mm, With POST+W/O DIP, N/A, KBC24S3H541R, KEIRAKU
Microphone	AWC4015P22C1	1	麦克风, MIC, ECM, D4.0xH1.5mm, -42+/-3dB, PIN, N/A, BOM4015YP1.8-G423-RC10n-HF-1, Gettop
Flat Vibrator	AVB1027L02C1	1	扁平马达, Flat Vibrator, D10xH2.7 mm, 3.0 V, 240. mW, Wire 11 mm, N/A, BVM-1027A12, BAOLONG
P-sensor Rubber	BNJ16GA001C0	1	接近传感器硅胶套, P-senser rubber, Lotus ics, 60 度 rubber, 黑色, SINCO
Back Camera Rubber	BNJ16GA000C0	1	后置摄像头硅胶套, Back Camera Rubber, Lotus ICS, 60 度 rubber, 黑色, SINCO
swap PCBA	F-B16GCIJIN1		客服周转主板, Lotus ICS 2SIM, EU, 软件:TAF1-930D-2B\AIJIN1-S40, one touch 930D,
Heat Conduction Tape LCD	BPC16GA001C0	1	主屏连接器高温绝缘胶带, Heat Conduction Tape LCD, Lotus ICS, 5*10mm0.1t 福万方
Home key	BFD16GAB11C1	1	主菜单键, Home key, Lotus ICS, P+R, 喷涂白色 UV 漆, SINCO
Home key	BFD16GAA11C1		主菜单键, Home key, Lotus ics, P+R, 喷涂黑色 UV 漆, SINCO
RF switch	ARF0060003C1	2	RF 连接器, RF switch, Over PCB, 6.0 PINs, 2.32 mm, 2.5×2.5×H1.5mm, W/O POST+W/O DIP, N/A, ECT818000163, ECT
Micro USB Connector	RH0050028C1	1	Micro USB 连接器, Micro USB Connector, Cut PCB, 5.0 PINs, 0.650 mm, 9.95×6.8×H2.45mm, W/O POST+With DIP, N/A, KIU90531S1M1R, KEIRAKU
FPC Connector	ARA0250003C1	1	FPC 连接器, FPC Connector, Over PCB, 25.0 PINs, 0.30 mm, 9.0×3.5×H1.0mm, W/O POST+W/O DIP, N/A, XF3H-2555-31AR, OMRON
FPC Connector	ARA0130003C1	1	FPC 连接器, FPC Connector, Over PCB, 13.0 PINs, 0.30 mm, 5.4X3.5XH1.0mm, W/O POST+W/O DIP, N/A, XF3H-1355-31AR, OMRON
Tflash connector	ARJ0080046C1	1	TFlash 卡连接器, TFlash Connector, Hinge Type, 8.0 PINs, 1.1 mm, 14.5x13.6xH1.60mm, W/O POST, N/A, CAH11-08163-SF05, LINKCONN
camera socket	ARK0240005C1	1	摄像头插座, Camera socket, Over PCB, 24.0 PINs, 0.60 mm, 8×8×H3.5mm, W/O POST+W/O DIP, N/A, CLE9124-6904F, SMK
SIM card connector	ARD0060078C1	2	SIM 卡连接器, SIM card connector, With Bridge, 6.0 PINs, 2.54 mm, 16.4x13.6xH1.8mm, W/O POST, N/A, KWS6183M3NR, KEIRAKU

Rev.		Page
1.0	one touch 930D Level 2 Repair Document	25/33
All rights reserved. Transfer, copy, use or communication of this file is prohibited without authorization.		

# BY NCK TEAM

## L2 Repair Document

# TCT

Mobile Limited

audio jack	ARG0050007C1	1	耳机插座, Audio Jack, Cut PCB, 5.0 PINs, D3.5 mm, 12.5x6.5xH4.4 mm, W/O POST+With DIP, N/A, JAF00-05364-1512, LINKCONN
------------	--------------	---	--

## 6 Level 2 repair

This chapter describes the Level 2 repair that can be done without any diagnostic equipment.

Problem description		Action And Solution
Charging	Bad or No Charge	1.Check voltage of the battery: if 0V, charge some minutes and check the charge indicator; 2.Check the battery contact, change the battery connector if broken; 3.Check the charge plug on B cover, change it if necessary;
Switch on with battery power	Can 't Switch on	1.Check voltage of the battery; 2.Check the battery contact, change the battery connector if broken; 3.Check the power on key; 4.Check BTB connector socket pin
Main display	Missing line or column; no display; bad or no LCD backlight	Check Connection flex (FPC cable),change it if necessary; Replace display module if necessary;
Vibrator	The vibrator does not work	Check the contact on the PCBA (dirty or oxidized), replace the vibrator if necessary;
Network Problem	No emission or No reception	Check the antenna contactor on the B cover; Check the contact on the PCBA (dirty or oxidized);
TF card	No communication between the phone and the TF card	Check the TF connector on the PCBA;
Camera	Camera doesn't work	Check camera module Check also camera socket broken or not

Rev.		Page
1.0	one touch 930D Level 2 Repair Document	26/33
All rights reserved. Transfer, copy, use or communication of this file is prohibited without authorization.		

Audio	Bad or no emission (TX audio from mobile);  Bad or no reception (RX audio on mobile);  Hands-free problem;  Key beep and melody problem	Check microphone, replace it if necessary;  Check the contact on the PCBA (dirty or oxidized)  Check loud speaker, replace it if necessary;  Check the contact on the PCBA (dirty or oxidized)
-------	---	--

In case the Level 2 repair can't solve the problem, or the PCBA is damaged, exchange the PCBA.

## 7 PCBA exchange

If Level 2 repair does not solve the failure, it is mandatory to change the PCBA and follow the process as below.

- 1) Collect the PCBA (without accessories, LCD and camera), with microphone and vibrator.
- 2) Get a new PCBA from the swap stock. Reuse those accessories to assemble the mobile.
- 3) Fill in the record sticker with IMEI number, fault code, short code, Hardware Technical Level and software version.
- 4) Send the NG PCBA with record sticker back to L3 repair center with the recommended packaging method,

**Note:** packaging method please refer item “12. Packaging requirement”.

## 8 Other component exchange

The other components exchange such as

- 1) LCD module
- 2) Touch lens
- 3) USB connector
- 4) FPC connector
- 5) Receiver
- 6) Speaker
- 7) Microphone
- 8) Main Camera

Rev.		Page
1.0	one touch 930D Level 2 Repair Document	27/33
All rights reserved. Transfer, copy, use or communication of this file is prohibited without authorization.		

- 9) Sub camera
- 10) Main FPC
- 11) Volume keypad FPC
- 12) Power key FPC
- 13) Other related mechanical components

Please follow the detail steps 4.3 (Disassembly and assembly process).

But need to be very careful to handle the components with related special tool or jig (especially replacing new components)

It is better to handle it with plastic tools (plastic tweezers and wedge etc.).

Besides operator must wear anti-static gloves, fingertips or wear static loop during the whole process of components exchange.

## 9 Final test

### 8.1 Function Test

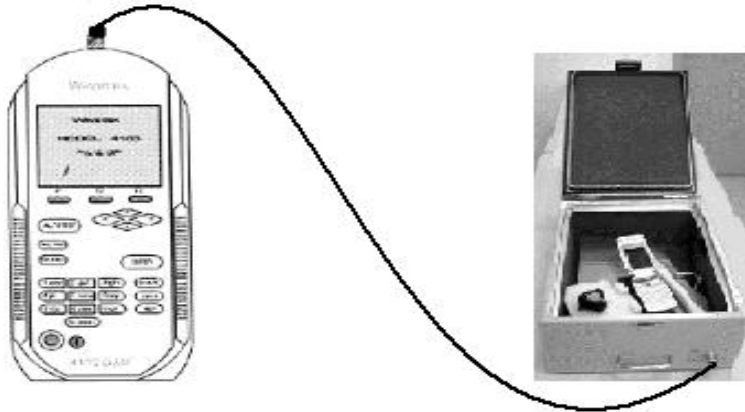
During the function test, the following items must be checked and validated.

- 2) Cosmetic aspect of the handset,
- 3) The Software Technical sticker state on the Board
- 4) Switch on the handset
- 5) Default welcome message
- 6) Press \*#1923# on the idle screen to start the auto test

Rev.		Page
1.0	one touch 930D Level 2 Repair Document	28/33
All rights reserved. Transfer, copy, use or communication of this file is prohibited without authorization.		



## 8.2 Measurement



## APPENDIX 1 Packaging Requirements

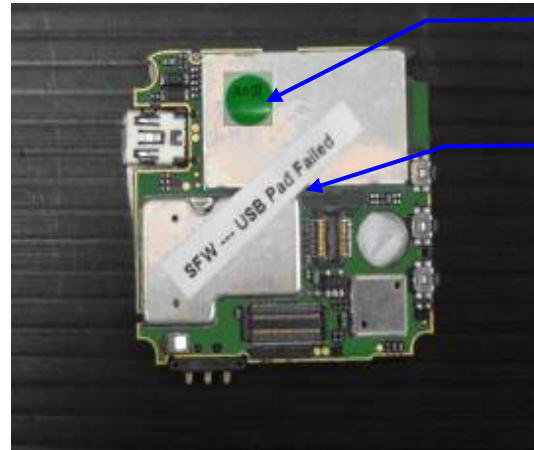
- 1、 Appearance Requirements of PCBA
  - i 、 The failure code label, commercial label, custom label and network code should be stuck onto PCBA
  - ii 、 The repair PCBA and custom label should be matched  
(see appendix one for the detailed information)

Rev.		Page
1.0	one touch 930D Level 2 Repair Document	29/33
All rights reserved. Transfer, copy, use or communication of this file is prohibited without authorization.		

PCBA of Flip Phone



put commercial label and network code on one side



Put failure code label and custom label on other side

PCBA of Bar Phone



Put commercial label and custom label on PCBA




At the same time put network code label and failure code label


## 2、 PCBA Packing Requirements

- i 、 After packing with anti-vibration bag, the commercial label on PCBA should be easy recognized;


Rev.		Page
1.0	one touch 930D Level 2 Repair Document	30/33
All rights reserved. Transfer, copy, use or communication of this file is prohibited without authorization.		



Inner packing is anti-static bag



Outer packing is anti-vibration bag



Put commercial label on anti-vibration bag

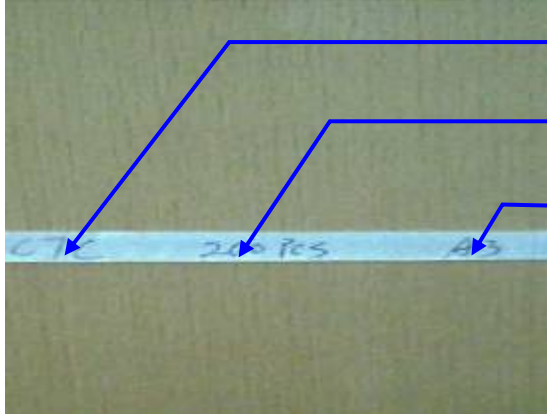
Custom label is easy to see

### 3、 Packing Requirements


- i. Please pay attention to the following points when different models put into one box:
- ii. Stick up the same models with tapes
- iii. Mark the model, quantity and specification of custom label on tape
- iv. The packing box for PCBA should have marking sticker and well sealed by the tape
- v. with TCL logo
- vi. Finally put all the packing boxes into packing cases strong enough and post to HK.




Stick up the same models with tapes



Mark the model, quantity and specification of custom label on tape



The packing box for PCBA should have marking sticker and well sealed by the tape with TCL logo



Put all the packing boxes into packing cases strong enough and post to HK

Once the PCBA are damaged or cannot be repaired or delayed in custom because of unqualified packing, the shipping side will take the responsibility.

If you have any question or problem, please feel free to contact us

(tct\_gcc\_techSupport@tcl.com) .

Thanks for your cooperation.

TCT Mobile Phone
Global Customer Service TS Dept.

Rev.		Page
1.0	one touch 930D Level 2 Repair Document	32/33
All rights reserved. Transfer, copy, use or communication of this file is prohibited without authorization.		

2012-11-08

Rev.		Page
1.0	one touch 930D Level 2 Repair Document	33/33
All rights reserved. Transfer, copy, use or communication of this file is prohibited without authorization.		